



13 Weir Street ANGLESEA, VIC



3



1



2

## Classic Anglesea

This wonderful beach house is a genuine hidden treasure offering a fantastic leafy outlook over the Kuarka Dorla Reserve and walking track as the backdrop. The first level has an open plan living, dining and kitchen opening to a vast north facing sundrenched deck and a canopy of mature native trees and an abundance of local birdlife.

The master bedroom also enjoys a beautiful outlook and a built in robes with the second level offering an additional two bedrooms with robes, family bathroom, separate toilet and a large laundry which could easily accommodate a second bathroom.

Set on 645sqm allotment approx, this beach home is only a short distance to the Anglesea Village, Anglesea River, Coogoorah Park, Anglesea Heath and the famous Anglesea Golf Course.

Other features include;

\* Split system air conditioner

**Price:** Contact Agent

**Property Type:** House

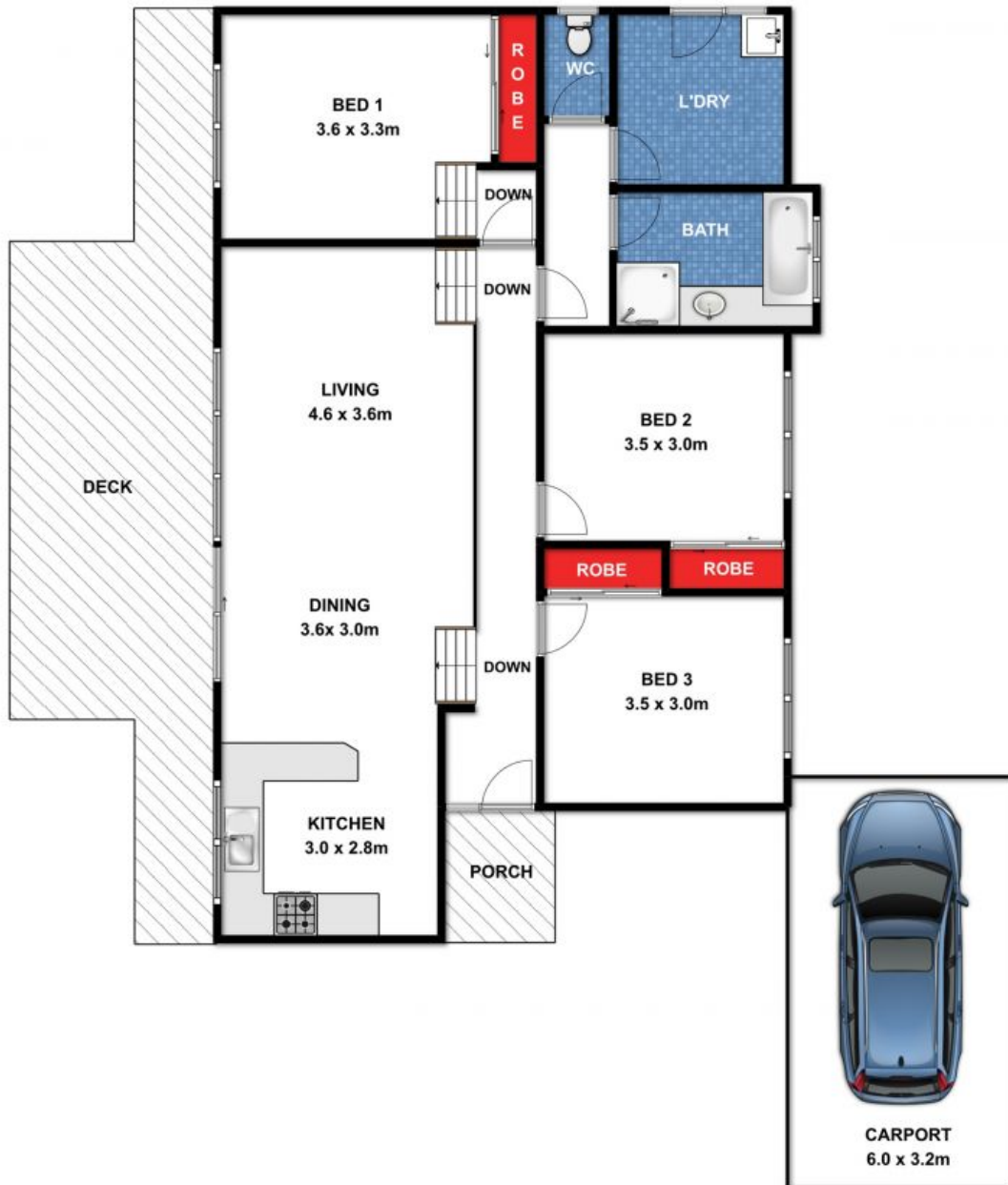
**Land:** 645 m2

# HAYDEN

Hayden Real Estate -

Anglesea

samr@hayden.com.au



### 13 Weir Street, Anglesea



While every attempt has been made to ensure the accuracy of the floor plan contained here, measurements are approximate and no responsibility is taken for any errors, omissions or miss-statement. This drawing is for illustrative purposes only and should be used as such by any prospective purchaser. All dimensions stated are approximate and should not be taken as definite.