



35 Lochard Drive TORQUAY, VIC



4



2



2

Dennehy Built Family Home 300mt.To Beachfront

Year round comfort is assured with split systems throughout, including living and bedrooms plus a Rinnai electric heater and ceiling fans. The double auto garage has internal access, plus rear roller access that leads via a driveway directly to the large back garage with fireplace, making it an ideal man-cave, extensive workshop or just providing heaps of storage.

Minutes to Torquay shops and schools, handy to transport and moments to the beautiful beachfront, this solid family home covers all the basics plus loads more. Dont miss out on this incredible opportunity.

Price: \$849,000

Property Type: House

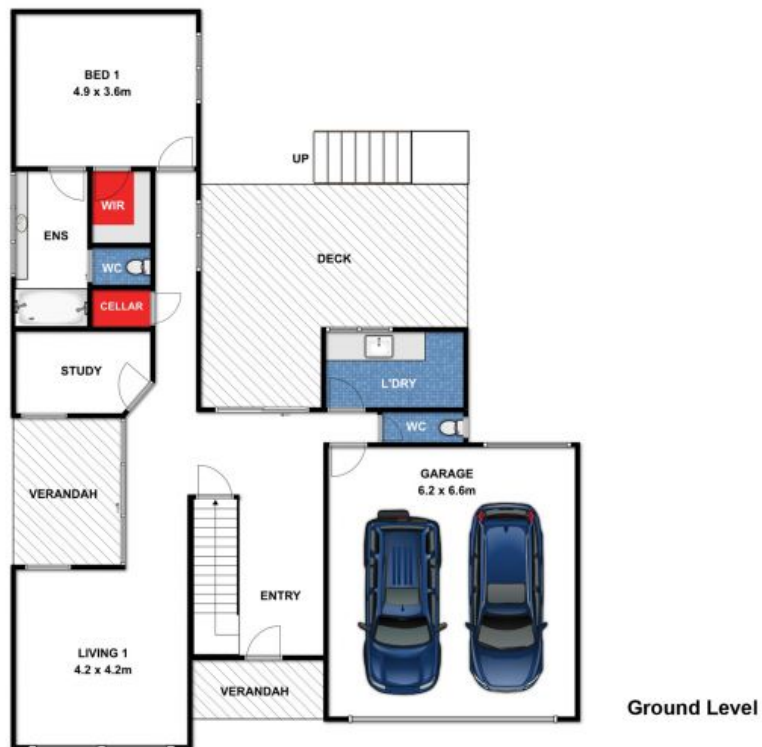
Land: 651 m2

HAYDEN

Hayden Real Estate -

Torquay

samh@hayden.com.au



35 Lochard Drive, Torquay



While every attempt has been made to ensure the accuracy of the floor plan contained here, measurements are approximate and no responsibility is taken for any errors, omissions or miss-statement. This drawing is for illustrative purposes only and should be used as such by any prospective purchaser. All dimensions stated are approximate and should not be taken as definite.