



1/14 Viewbay Drive LEOPOLD, VIC



4



1



1

## Prestigious Location & Bay Views - An Absolute Delight!

Boasting its own title, this classic weatherboard home presents a terrific opportunity for savvy investors or those dreaming of owning their very own home! With views reaching over the bay waters to the You Yangs, the outlook is simply delightful.

Timber floorboards and window frames add a lovely sense of warmth to the spotless interiors.

Equipped with an Emilia freestanding stainless steel oven and gas hob, the kitchen is ready to accommodate your cooking endeavours.

Surrounded by high hedges, the secure section of the front yard is a private haven for children and pets. A single carport provides off-street parking.

**Price:** \$350,000-\$380,000

**Property Type:** House

# HAYDEN

**Karen Purcell**

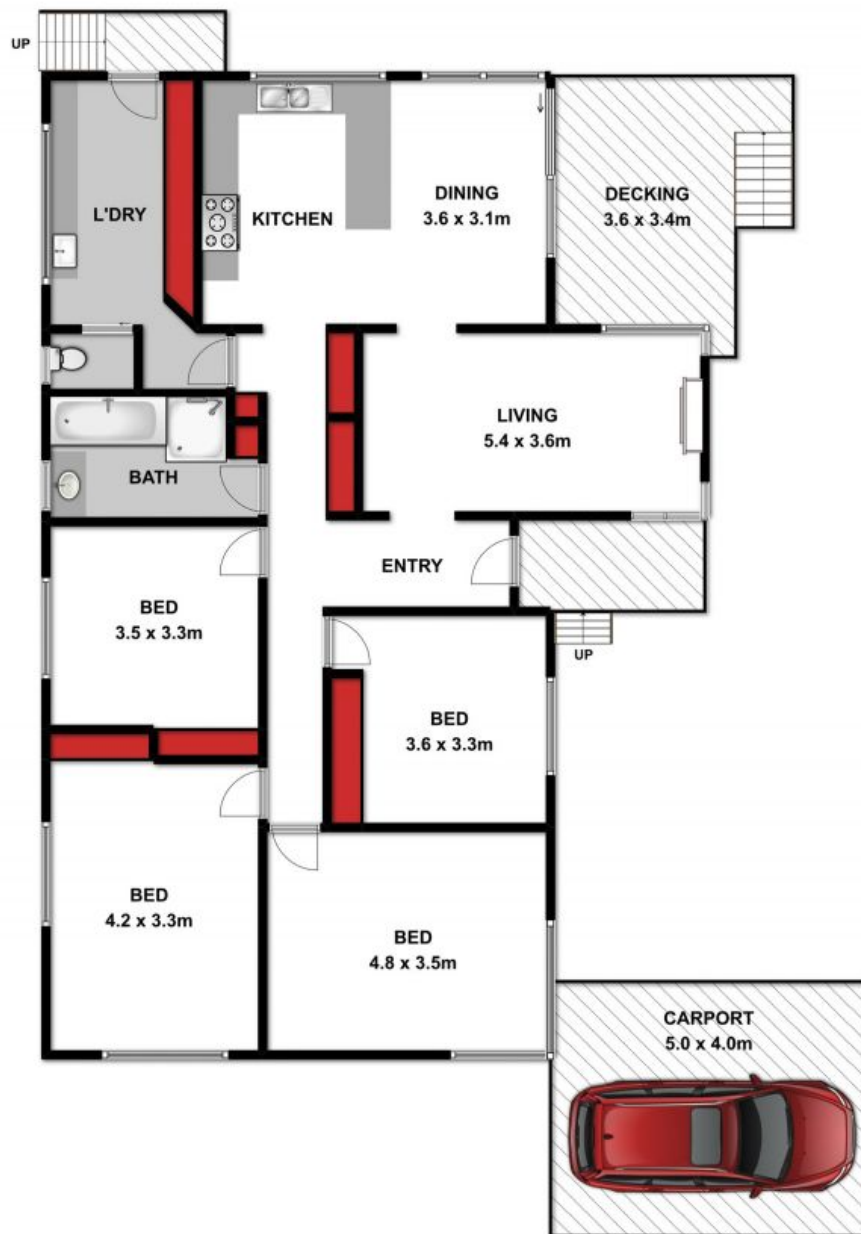
0448510143

karenp@haydenleopold.com.au

**Hugh McKewan**

0417 538 779

hugh@haydenoceanogrove.com.au



Approx Area 121.17m<sup>2</sup>

Whilst [bwrn.com.au](http://bwrn.com.au) has made every attempt to ensure the accuracy of the floor plan contained here, measurements are approximate and no responsibility is taken for any error, omission, or mis-statement. This plan is for illustrative purposes only.



**1/14 Viewbay Drive Leopold**

**HAYDEN**

**1/14 Viewbay Drive**

**LEOPOLD, VIC**