



2/7-9 Dendle Street LEOPOLD, VIC



2



1



1

A Lifestyle of Ease Awaits...

If you've been searching for low-maintenance living close to all of life's amenities, look no further! Positioned only 800 metres (approx.) from the Gateway Plaza, a lifestyle of ease awaits!

Set back from the street front in a set of four units, this home offers a welcome sense of security.

The open plan living zone creates the hub of the home and provides ample space for entertaining or simply relaxing with friends. Flowing through to the sheltered north-facing alfresco deck, a lovely open-air feel radiates throughout the home.

The kitchen is well equipped with a built-in pantry, breakfast bar, and appliances including an oven, electric cooktop, and rangehood.

Plentiful storage and a laundry with external and garage access is a huge perk in this compact home.

Price: \$320,000 - \$350,000

Property Type: Unit

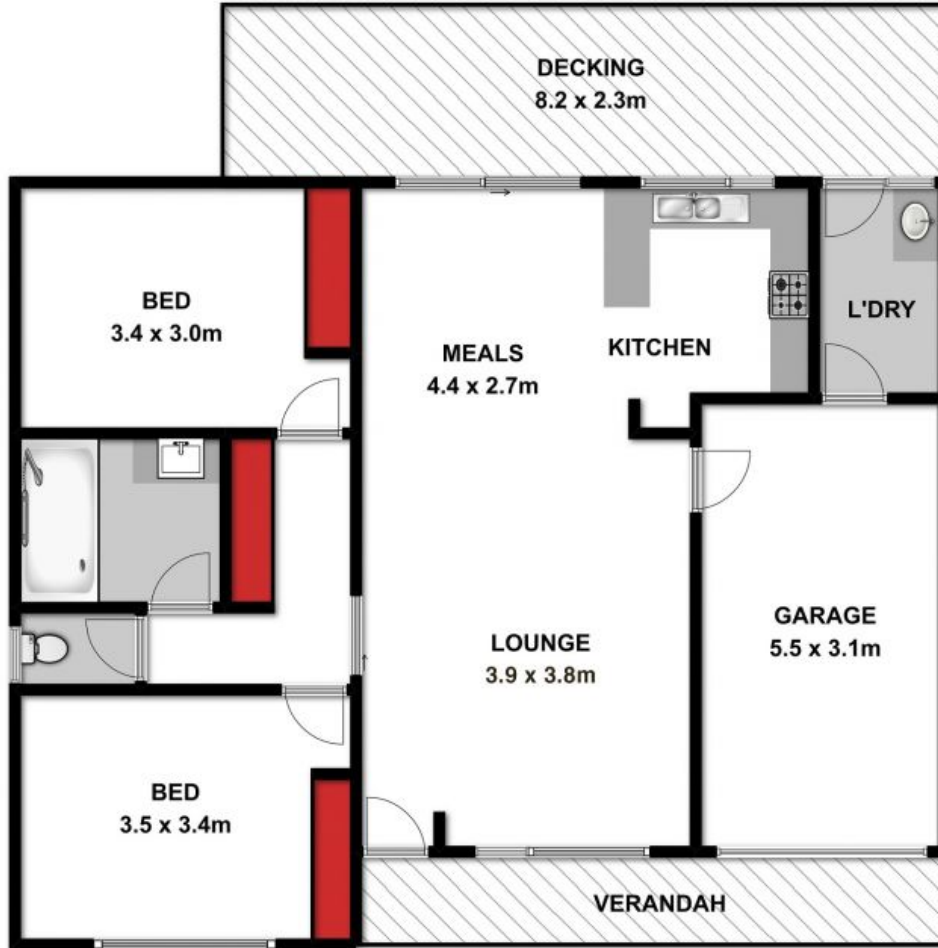
Land: 187 m2

HAYDEN

Karen Purcell

0448510143

karenp@haydenleopold.com.au



Approx Area 46.8m²

Whilst bwrn.com.au has made every attempt to ensure the accuracy of the floor plan contained here, measurements are approximate and no responsibility is taken for any error, omission, or mis-statement. This plan is for illustrative purposes only.



2/7-9 Dendle Street, Leopold



2/7-9 Dendle Street

LEOPOLD, VIC