



34 Aerial Avenue TORQUAY, VIC



4



2



2

Flawless Contemporary Quality

Alfresco dining is perfect either undercover or out in the sun on a large wraparound Merbau deck complete with outdoor shower. Side access, great lawn space and handy veggie gardens plus a DLUG with rear roller access and internal access, great storage and a large laundry with access to the side service yard complete this perfect picture.

Positioned within minutes to the beach and the prestigious Sands Golf Club, this exceptional coastal home invites an immediate inspection.

Price: \$760,000

Property Type: House

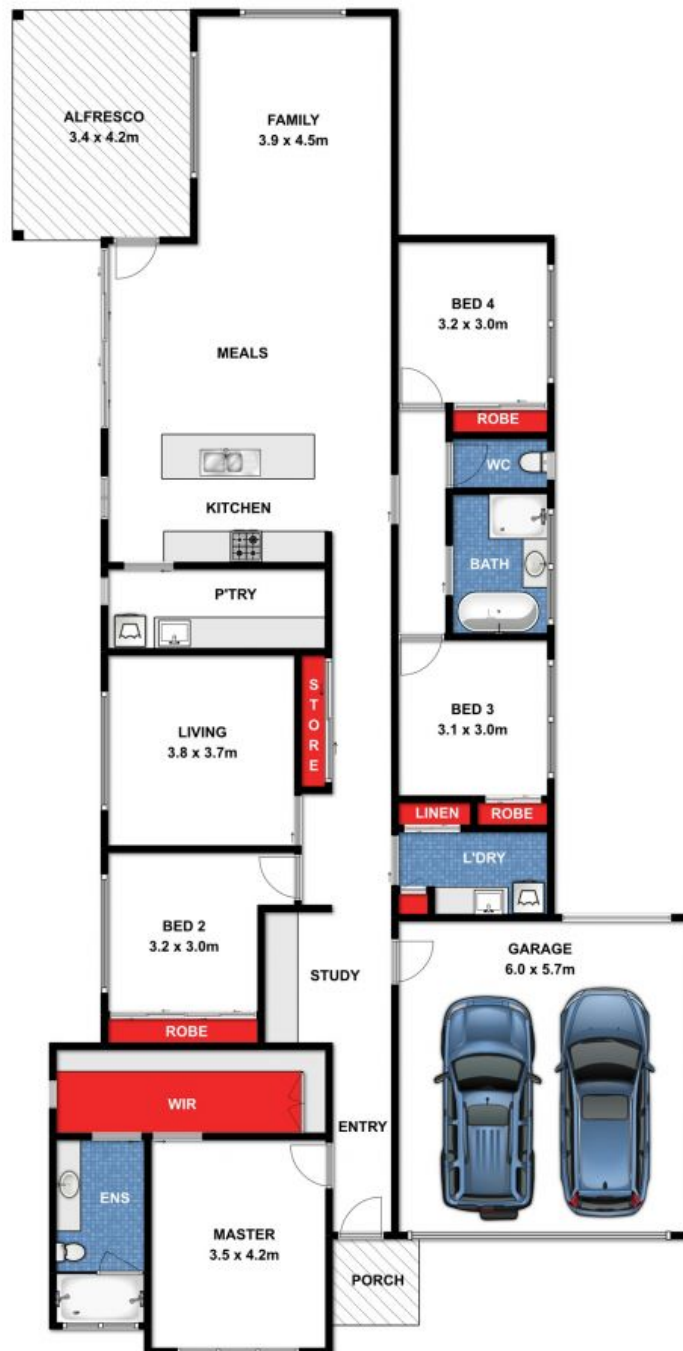
Land: 541 m2

HAYDEN

Ben Smith

0423050825

bens@hayden.com.au



34 Aerial Avenue, Torquay



While every attempt has been made to ensure the accuracy of the floor plan contained here, measurements are approximate and no responsibility is taken for any errors, omissions or mis-statement. This drawing is for illustrative purposes only and should be used as such by any prospective purchaser. All dimensions stated are approximate and should not be taken as definite.

34 Aerial Avenue

TORQUAY, VIC