



1/145 Newcombe Street PORTARLINGTON, VIC



2



1



1

Neat Unit in Prime Position

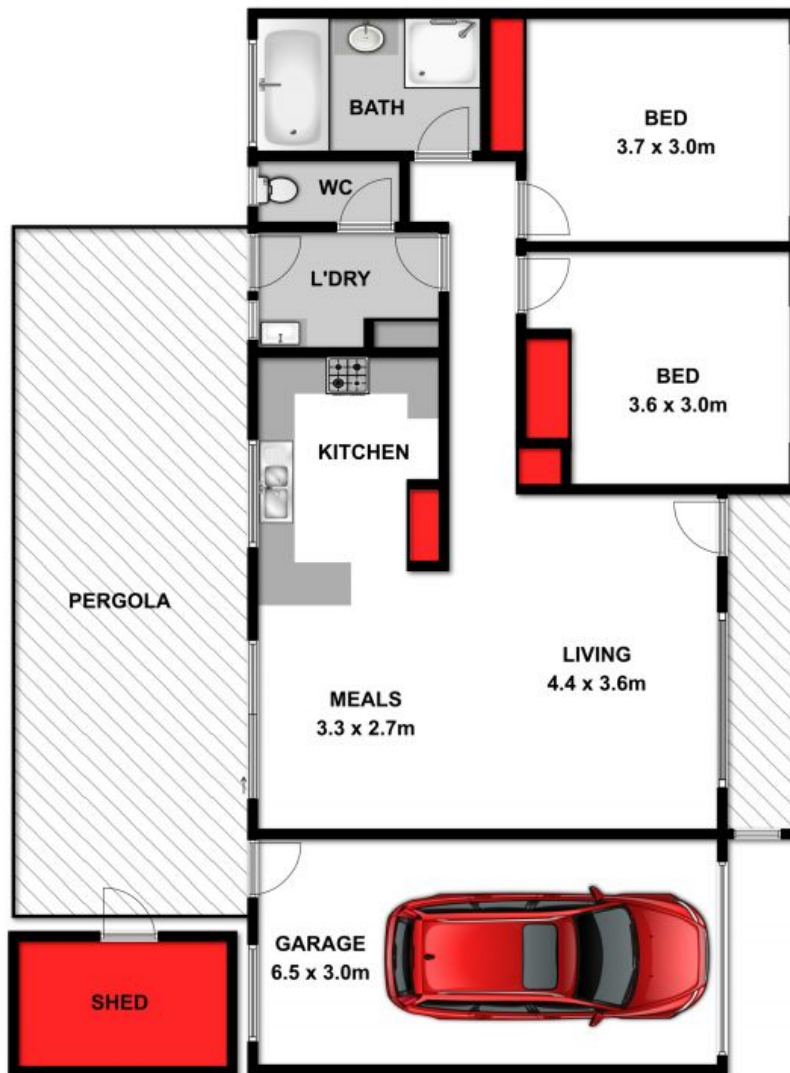
**Price:** \$340,000 - \$360,000  
**Property Type:** Unit  
**Land:** 155 m2

**HAYDEN**

**Karen Purcell**

0448510143

karenp@haydenleopold.com.au



Approx Area 145.25m<sup>2</sup>

Whilst [bwrn.com.au](http://bwrn.com.au) has made every attempt to ensure the accuracy of the floor plan contained here, measurements are approximate and no responsibility is taken for any error, omission, or mis-statement. This plan is for illustrative purposes only.



**1/145 Newcombe Street, Portlarington**



**1/145 Newcombe Street**

**PORTARLINGTON, VIC**