



1/145 Newcombe Street PORTARLINGTON, VIC



2



1



1

Neat Unit in Prime Position

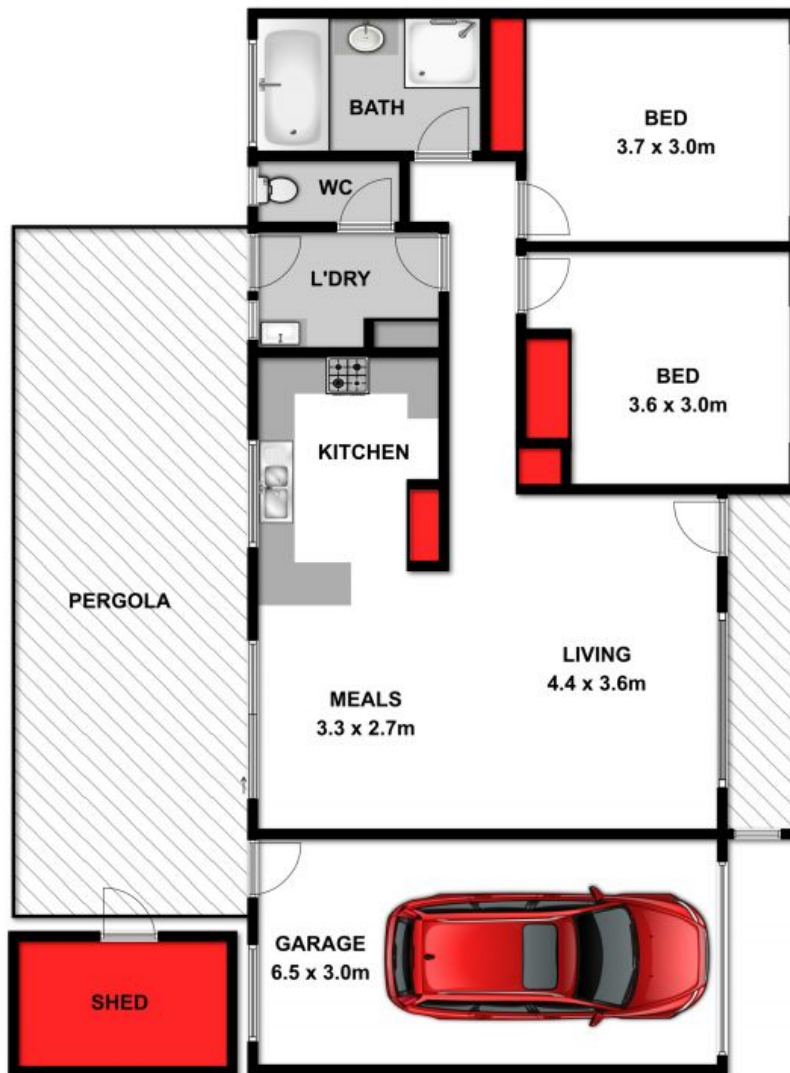
Price: \$340,000 - \$360,000
Property Type: Unit
Land: 155 m2

HAYDEN

Karen Purcell

0448510143

karenp@haydenleopold.com.au



Approx Area 145.25m²

Whilst bwrn.com.au has made every attempt to ensure the accuracy of the floor plan contained here, measurements are approximate and no responsibility is taken for any error, omission, or mis-statement. This plan is for illustrative purposes only.



1/145 Newcombe Street, Portlarington



1/145 Newcombe Street

PORTARLINGTON, VIC