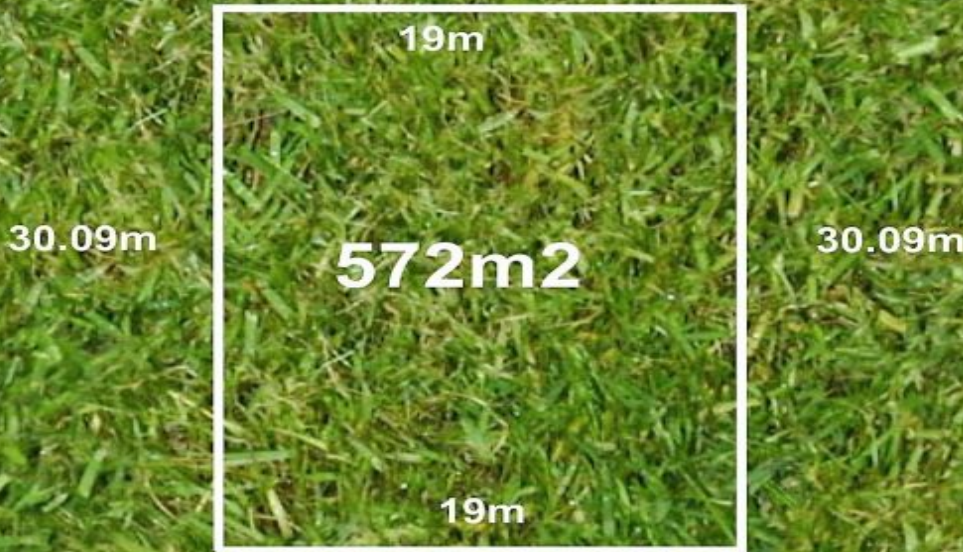
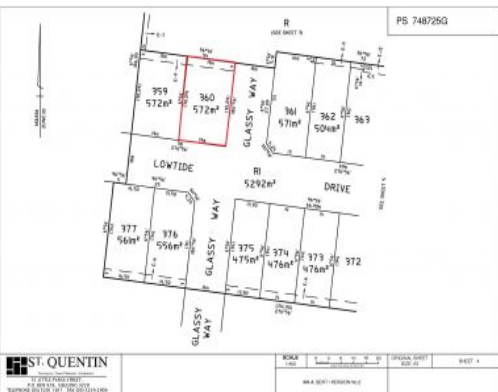


Lot 360 Lowtide Dve



Disclaimer: Dimensions are approximate. All information contained herein is gathered from sources we believe to be reliable, however we cannot guarantee it's accuracy and interested persons should rely on their own enquiries.



Lot 360 Lowtide Drive TORQUAY, VIC

Titled By The End Of 2017 Lot 360 Zeally Sands Estate

Do not miss this rare opportunity to secure a block of land in the very popular Zeally Sands Estate Torquay. The block is expected to title in November 2017. Yes that is right, by the end of this year.

Located in Stage 11 on Lowtide Drive, Lot 360 is a corner block, 30m in depth with a 19m frontage and a north rear yard.

Walking distance to Whites Beach, parkland, childrens playground, Daycare Centre and Primary School due to open in 2018, Torquay College high school, public transport, sporting ovals and the new Dunes shopping precinct.

A perfect location for your new home or investment property in Torquay. Call today this land will sell quickly.

Price: \$415,000
Property Type: Land
Land: 572 m2



Hayden Real Estate -

Torquay
 samh@hayden.com.au