



23 Lahinch Mews TORQUAY, VIC



4



2



2

Finest Coastal Living

Nestled on a 789sqm lot overlooking the sixth hole of the Sands Golf Course, this contemporary, architecturally designed home epitomises comfort, style and the best of coastal living. Entry is via a spacious foyer featuring a striking polished concrete floor and an impressive Western Australian limestone feature wall.

Entertaining friends and family here is effortless with the gourmet kitchen that adjoins the dining and living areas. Stone bench tops, stainless appliances and a separate butler's kitchen combine good looks with smart functionality.

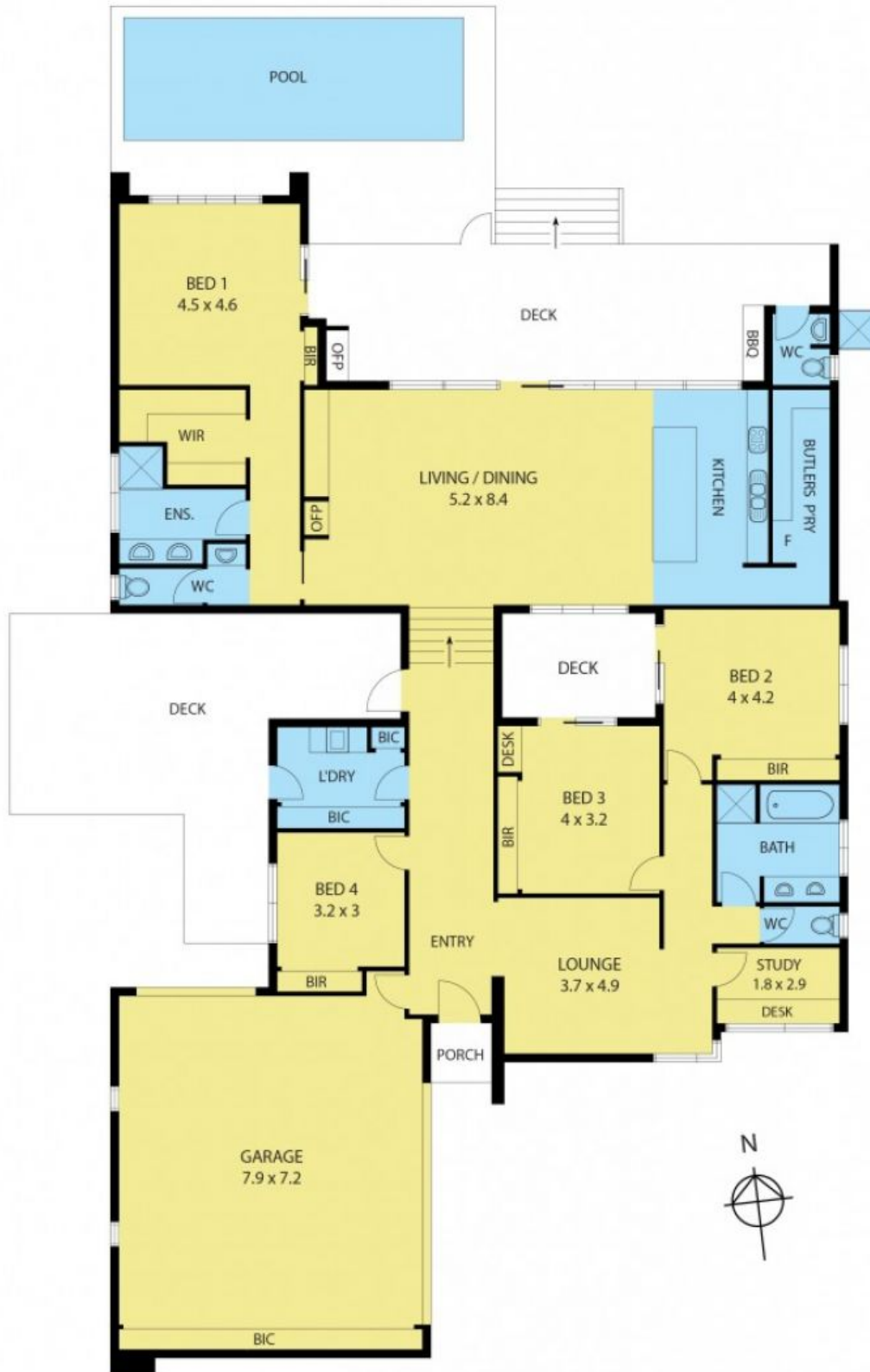
The master suite is a haven in itself. Light and bright, it features a walk in robe and ensuite. A large picture window frames the view and there are sliding doors onto the deck a

Price: \$1,095,000
Property Type: House
Land: 789 m2

HAYDEN

Hayden Real Estate -

Torquay
 samh@hayden.com.au



Dimensions are approximate. All information contained herein is gathered from sources we believe to be reliable. However we can not guarantee its accuracy and any interested persons should rely on their own inquiries.