



4/44 Ash Road LEOPOLD, VIC



2



1



1

The Perfect Downsize in Most Convenient Location!

Set back from the street within a small block of four attractive, low maintenance properties, this two bedroom unit offers you the unique opportunity to downsize into a lifestyle of convenience. Boasting a short stroll to the Ash Road shopping strip, direct access to public transport and walking distance to close by community facilities, you will be hard pressed to find a better location.

The simplified interior offers a highly functional layout, with open plan living and meals areas both enjoying sunny aspects through multi-light glazing. Direct access onto the undercover outdoor alfresco is enjoyed from here, doubling the living footprint.

Price: \$320,000 - \$350,000

Property Type: Unit

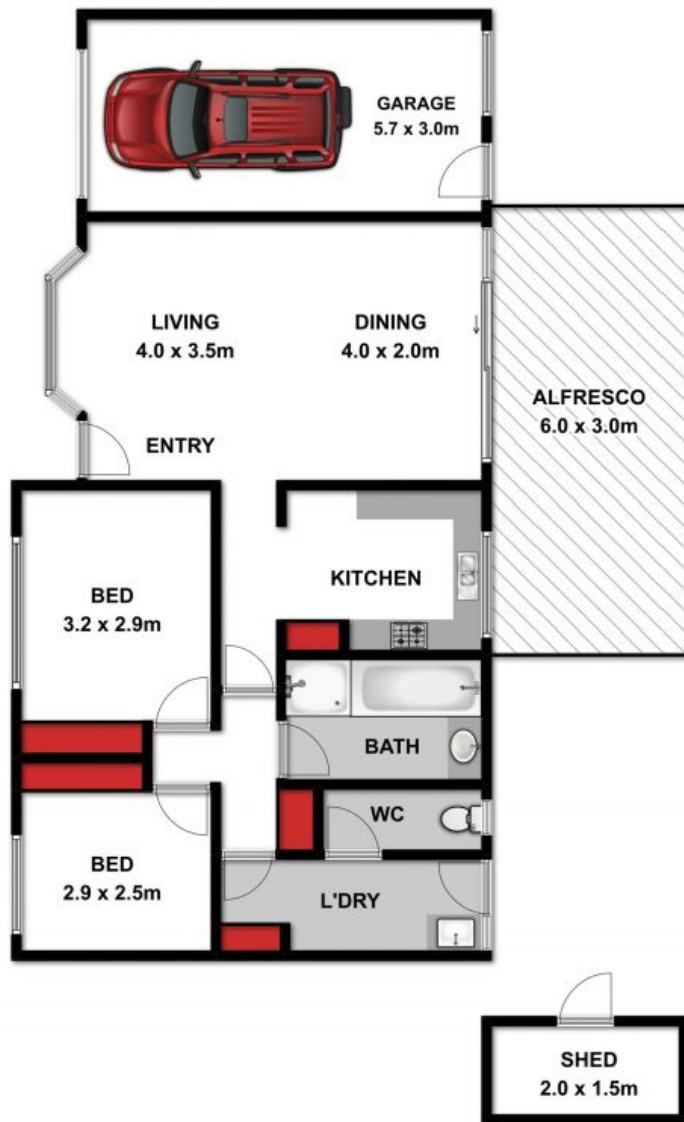
Land: 181 m2

HAYDEN

Karen Purcell

0448510143

karenp@haydenleopold.com.au



Approx Area 100.6 m²

Whilst bwrn.com.au has made every attempt to ensure the accuracy of the floor plan contained here, measurements are approximate and no responsibility is taken for any error, omission, or mis-statement. This plan is for illustrative purposes only.



4/44 Ash Rd, Leopold



4/44 Ash Road

LEOPOLD, VIC