



11 Tareeda Way OCEAN GROVE, VIC



3



2



2

Light & Breezy

Family living will thrive in this 3-bedroom 2-bathroom brick residence. With an abundance of natural light, a neutral-hued palette, single-level ease and an intuitive U-shaped floor plan. The formal lounge/dining naturally flows to the central open plan kitchen/casual eating/living area - with a pleasant outlook to the undercover paved patio and lawn. The kitchen in classic timber cabinetry, is well appointed with an electric built-in oven and 4-gas burner cooktop with a tile splashback. Other features include a double-sink, step-in pantry, plus dishwasher and microwave nooks. The master suite with ensuite, is tucked away for privacy, with an in-vogue timber-style vanity, shower, heated towel rack and WC. The built-in robes are exceptionally generous. The light filled minor bedrooms reside with the spacious laundry, separate WC and main bathroom, in an eastern facing wing that smartly envelopes the central lawn. Outbuildings include an auto double-garage with two-way access, a Colorbond (5m x 4.5m) 'man-cave' shed with a concrete slab and separate vehicle access. Perfect for a boat or trailer! The yard is fantastic for entertaining, has established trees and groomed garden beds. Additional features include: urban footprint reduction with console controlled solar panels. Comfortable climate living with 2 x Vulcan natural gas wall

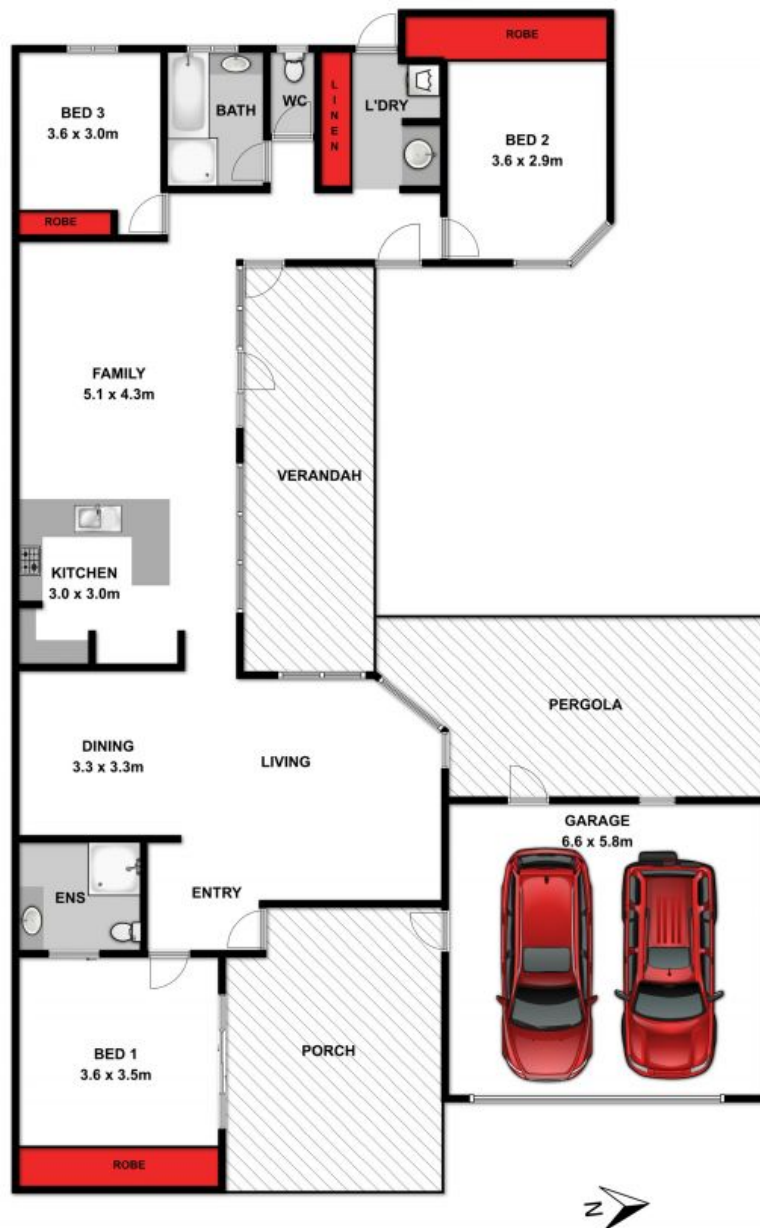
Price: \$540,000 - \$590,000
Property Type: House
Land: 588 m2

HAYDEN

Lynley Bassett

0448515925

lynley@haydenoceanogrove.com.au



11 Tareeda Way

OCEAN GROVE, VIC