



3 Karumba Court LEOPOLD, VIC



3



1



1

Home Amongst the Gum Trees on 849m?!

In a quiet leafy end-of-court location in the heart of Leopold, this excellent 3-bedroom family home is a showpiece of care and presentation. The huge block incorporates beautiful gums that grace the terraced front garden. The generous driveway leads to an oversized carport and extra space to the side front yard is the perfect spot for a caravan or boat. A return verandah takes you to the front door where you're greeted by a relaxed lounge with lovely northern light. Adjacent is a dining area with a doorway through to the cosy kitchen with floor tiles and a black ceramic-tile splashback. Stainless-steel Westinghouse appliances are a feature here - with electric oven, gas cooktop, rangehood and dishwasher all built-in. Under a split system on the southern wall is a bench for more casual dining. Three bedrooms - two with ceiling fans - share the neat family bathroom. Leaving the kitchen through a sliding glass door, you step into a world of entertainment! A huge covered entertaining zone with bar offers the ideal third living area! A gabled roof and the addition of ceiling fans makes this the perfect place for large gatherings or relaxing summer nights. A delightful back garden with manicured lawn and superb tall trees around the perimeter provides colour and privacy. Bird life abounds, with lorikeets and galahs joining the regulars.

Price: \$450,000-\$495,000
Property Type: House
Land: 849 m2

HAYDEN

Karen Purcell

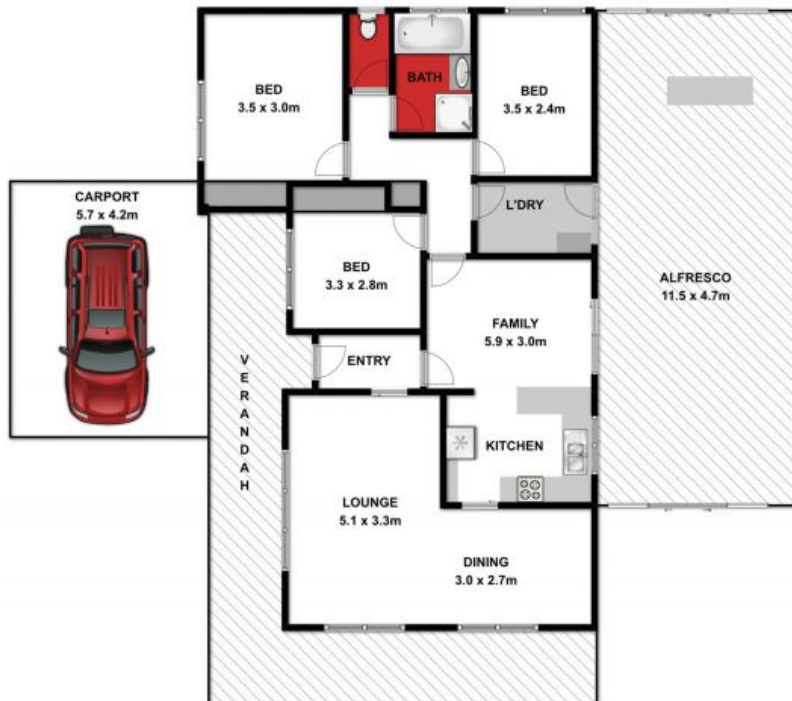
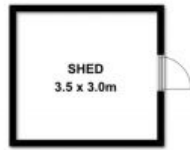
0448510143

karenp@haydenleopold.com.au

Hugh McKewan

0417 538 779

hugh@haydenoceanogrove.com.au



Approx Area 209.6 m²

Whilst bwrn.com.au has made every attempt to ensure the accuracy of the floor plan contained here, measurements are approximate and no responsibility is taken for any error, omission, or mis-statement. This plan is for illustrative purposes only.



3 Karumba Court, Leopold

HAYDEN

3 Karumba Court

LEOPOLD, VIC