



1/8 Myuna Street LEOPOLD, VIC



2



2



2

Fresh & Bright ? The Perfect Leopold Investment!

This fresh and bright townhouse has a surprisingly large floor plan. With only two townhouses on the block and in a fantastic area of Leopold, this property is ideal for those looking to buy their first home, down-size or invest. Freshly painted throughout, there is nothing to do other than move in and enjoy a low maintenance lifestyle! A delightful rose garden at the property's entrance leads into the open-plan lounge area with a large north-facing window. The kitchen is well equipped with a Chef electric oven, 4-burner gas cooktop and rangehood, plus dishwasher. Storage is in abundance with generous timber-fronted cupboards, drawers and pantry. Year-round comfort is taken care of with ceiling-ducted evaporative cooling throughout and a large gas wall heater. The master bedroom enjoys northern light, a large built-in robe and an ensuite with corner spa bath and vanity unit. The second bedroom has easy access to another bathroom with shower, vanity and a large cupboard cleverly designed as a built-in laundry. An outdoor slider leads to a spacious, private deck that's primed for entertaining! A compact, low-maintenance garden separates the deck from the double garage at the rear. Exterior security blinds on all windows is a real bonus for those looking for peace-of-mind. The Myuna reserve and playground is just a skip and a

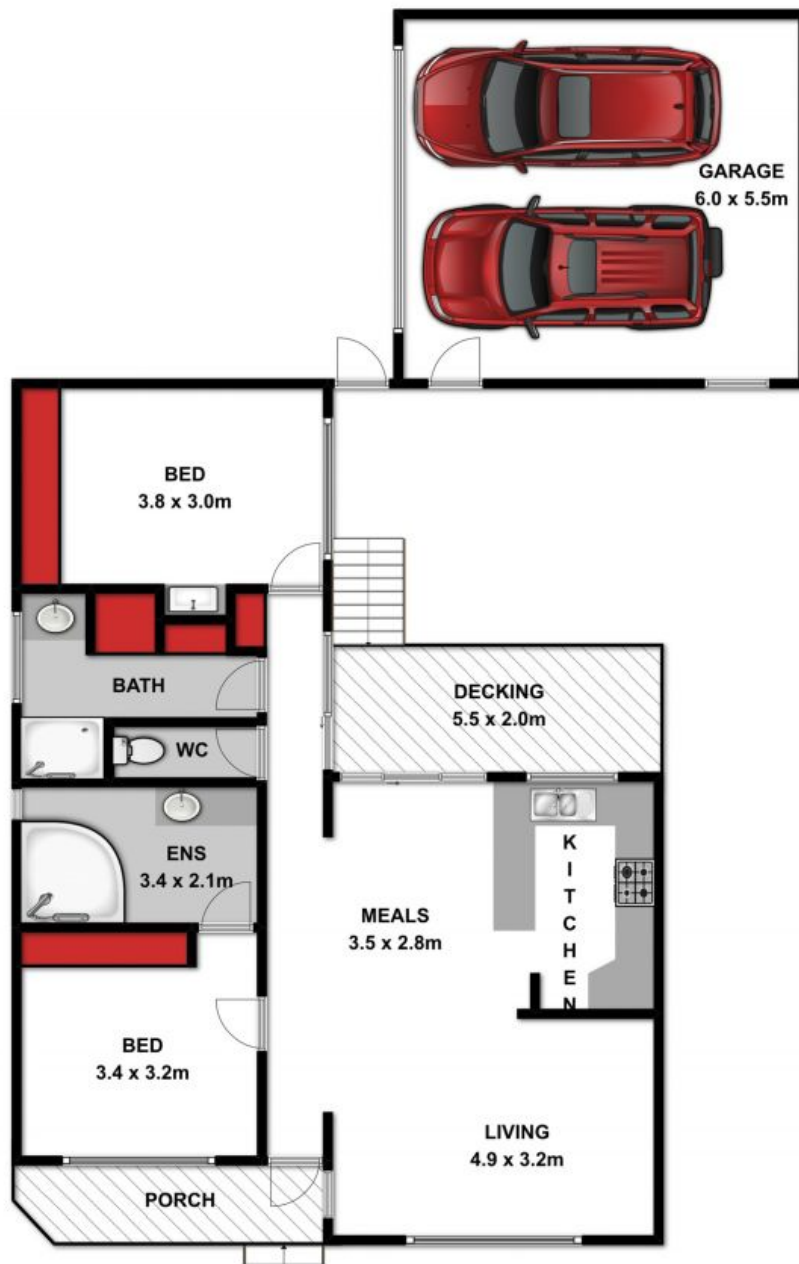
Price: \$345,000 - \$375,000
Property Type: Townhouse
Land: 264 m2

HAYDEN

Karen Purcell

0448510143

karenp@haydenleopold.com.au



Approx House Area 134.6 m²

Whilst bwrn.com.au has made every attempt to ensure the accuracy of the floor plan contained here, measurements are approximate and no responsibility is taken for any error, omission, or mis-statement. This plan is for illustrative purposes only.



1/8 Myuna Street, Leopold

HAYDEN

1/8 Myuna Street

LEOPOLD, VIC