



10/797-799 Bellarine Highway LEOPOLD, VIC



2



1



1

Classy Investment

Low-maintenance living doesn't get much better than this! Featuring a spacious backyard, beautifully presented interiors, and recent updates throughout, including a new kitchen and bathroom, this stylish unit will astound!

Rental Return: approx. \$300-\$320p/w.

Two generous bedrooms are complete with ceiling fans and built-in robes. The recently updated bathroom is graced with a semi-frameless shower and bathtub, while the laundry features external access. A split-system air conditioner keeps you comfortable in all seasons.

A garden shed completes the backyard, while a single carport provides off-street parking. From the outside, you'd never guess what awaits you within! Inspection is a must!

Price: \$340,000 - \$370,000

Property Type: Unit

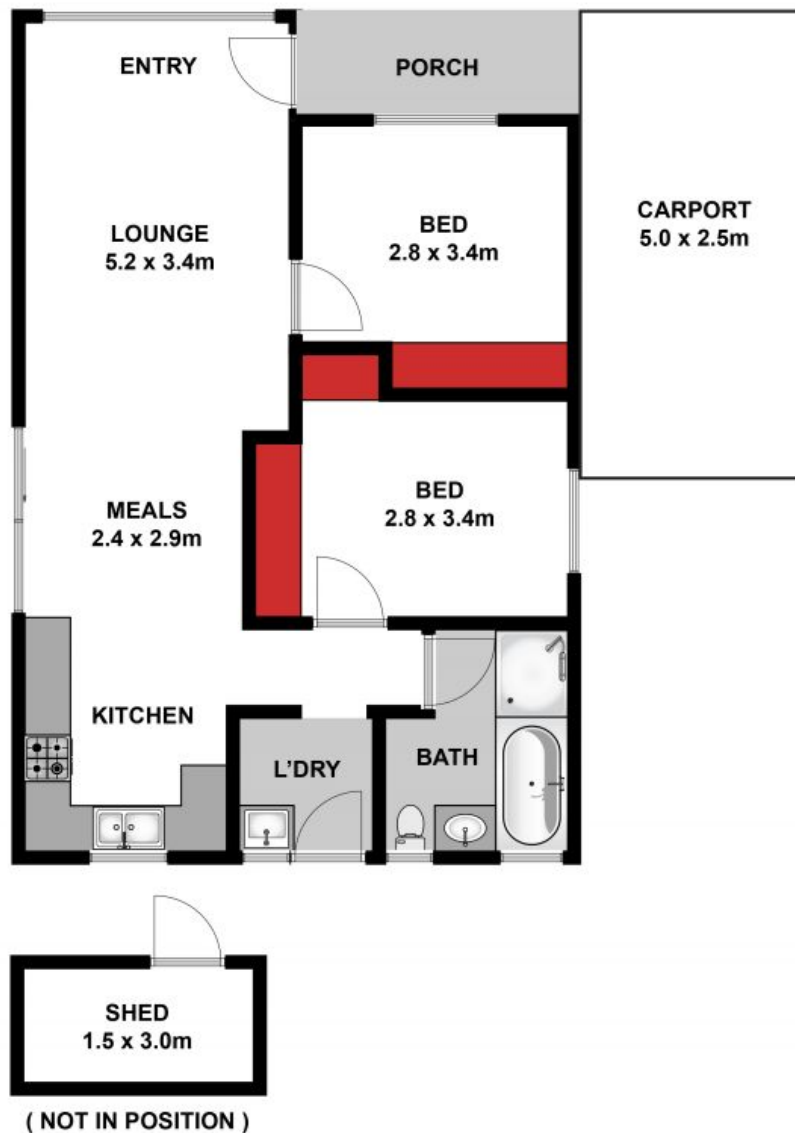
Land: 347 m2

HAYDEN

Karen Purcell

0448510143

karenp@haydenleopold.com.au



Approx Area 82.5 m²

Whilst bwrn.com.au has made every attempt to ensure the accuracy of the floor plan contained here, measurements are approximate and no responsibility is taken for any error, omission, or mis-statement. This plan is for illustrative purposes only.



10/797-799 Bellarine Highway, Leopold



10/797-799 Bellarine Highway

LEOPOLD, VIC