



10 Hettie Court TORQUAY, VIC



3



2



5

Quiet Court Location On 700sqm

This established home in old 'Wombah Park', boasts generous proportions inside and is complimented by space in a quiet court location. Close to playgrounds and family beaches this property sits on approx 700m2 - a rare opportunity to own spacious family living.

The ground floor hosts open plan living with smart functional kitchen, stainless steel gas cooktop/electric oven, dishwasher and casual meals area. Formal dining and lounge are light filled and the private study/home office is a welcomed addition. The laundry with toilet and shower offer convenience, features include gas log fire and under slab heating.

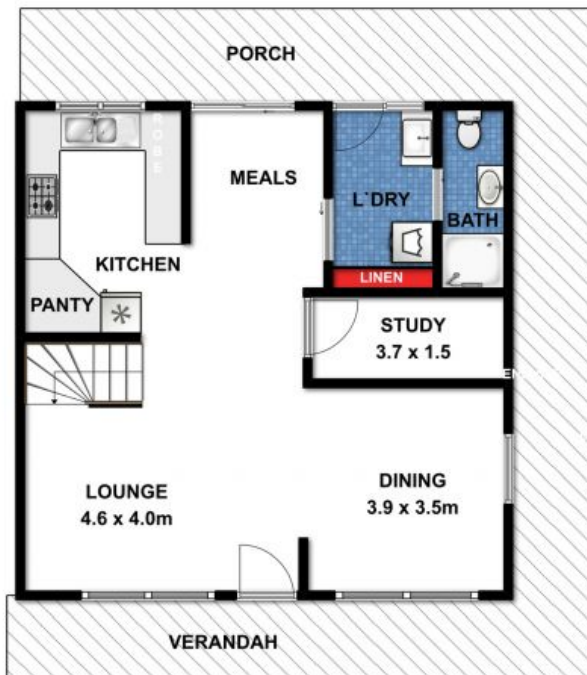
Large rear yard, established lawns, solar panel network and large undercover outdoor living space for entertaining make this solid house a home. With garden shed, garage, two car secured parking to side and generous undercover parking at front - there is room to store t

Price: \$749,000
Property Type: House
Land: 698 m2



Hayden Real Estate -

Torquay
 samh@hayden.com.au



10 Hettie Court , Torquay



While every attempt has been made to ensure the accuracy of the floor plan contained here, measurements are approximate and no responsibility is taken for any errors, omissions or miss-statement. This drawing is for illustrative purposes only and should be used as such by any prospective purchaser. All dimensions stated are approximate and should not be taken as definite.