



1123 Horseshoe Bend Road TORQUAY, VIC



4



2



2

## Best value in Torquay!

This home is a brand new blank canvas waiting for you to add your own personal touch. Organise the flexible layout to suit your needs and add your interior design ideas to create a home that you will love.

Other features of the home include a large kitchen with full butler's pantry, Smeg appliances, stone bench tops and a super sized breakfast bar. There is ample storage space throughout the home and in the internal access double garage.

The decor has a modern feel with earthy neutral tones and there is a seamless flow out to the garden and sunny outdoor entertainment area.

This home is conveniently located close to shops, schools and parks. With all the hard work done, simply move in, stamp it with your own style and instantly start to enjoy life on

**Price:** \$675,000

**Property Type:** House

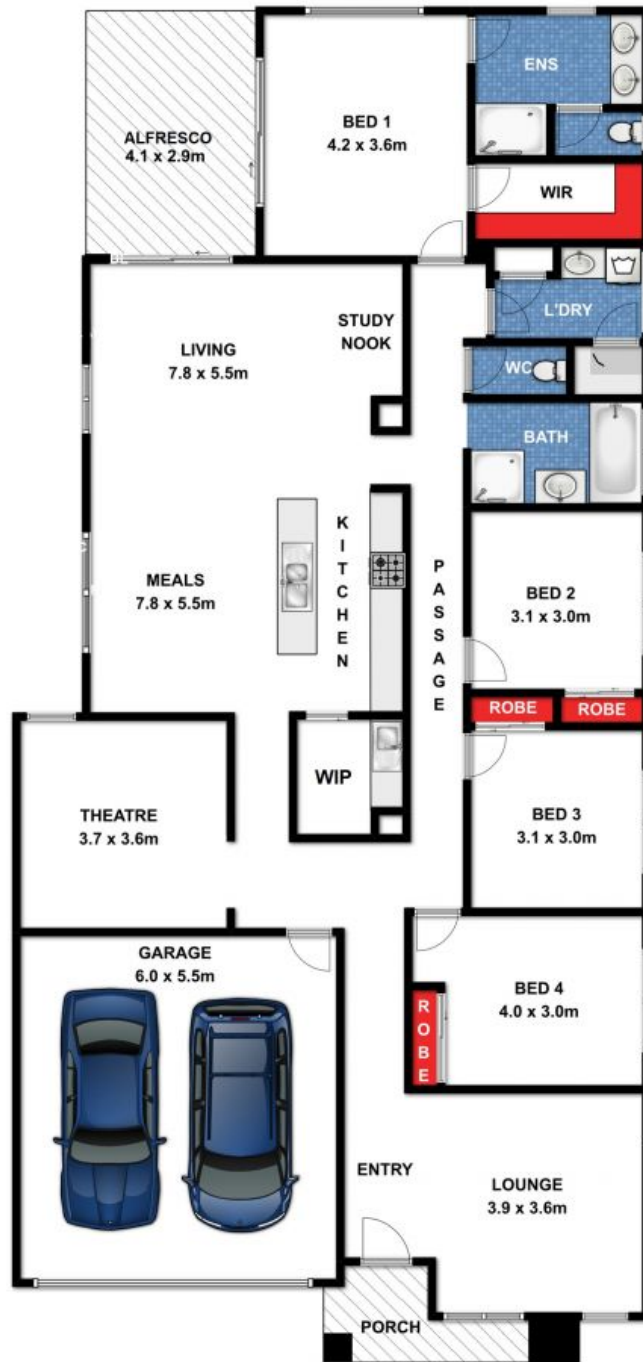
**Land:** 491 m2

# HAYDEN

**Ben Smith**

0423050825

bens@hayden.com.au



### 1123 Horseshoe Bend Road, Torquay



While every attempt has been made to ensure the accuracy of the floor plan contained here, measurements are approximate and no responsibility is taken for any errors, omissions or miss-statement. This drawing is for illustrative purposes only and should be used as such by any prospective purchaser. All dimensions stated are approximate and should not be taken as definite.