



6/798 Bellarine Highway LEOPOLD, VIC



2



1



1

SOLD

This solid, two bedroom unit is secure, immaculately presented and is one of 6 in this private block.

Rental Return: Approx. \$300-\$320p/w.

An open plan design, the smart kitchen with tiled splashback has plenty of overhead and under bench storage, a stainless steel electric oven and cooktop and a view onto the courtyard. A split system cools the unit and a dining table leads to a comfortable, carpeted lounge that is kept private by mature plantings and an awning. A westerly aspect offers lovely afternoon sun, filtered by the shrubbery.

Price: \$290,000 - \$320,000

Property Type: Unit

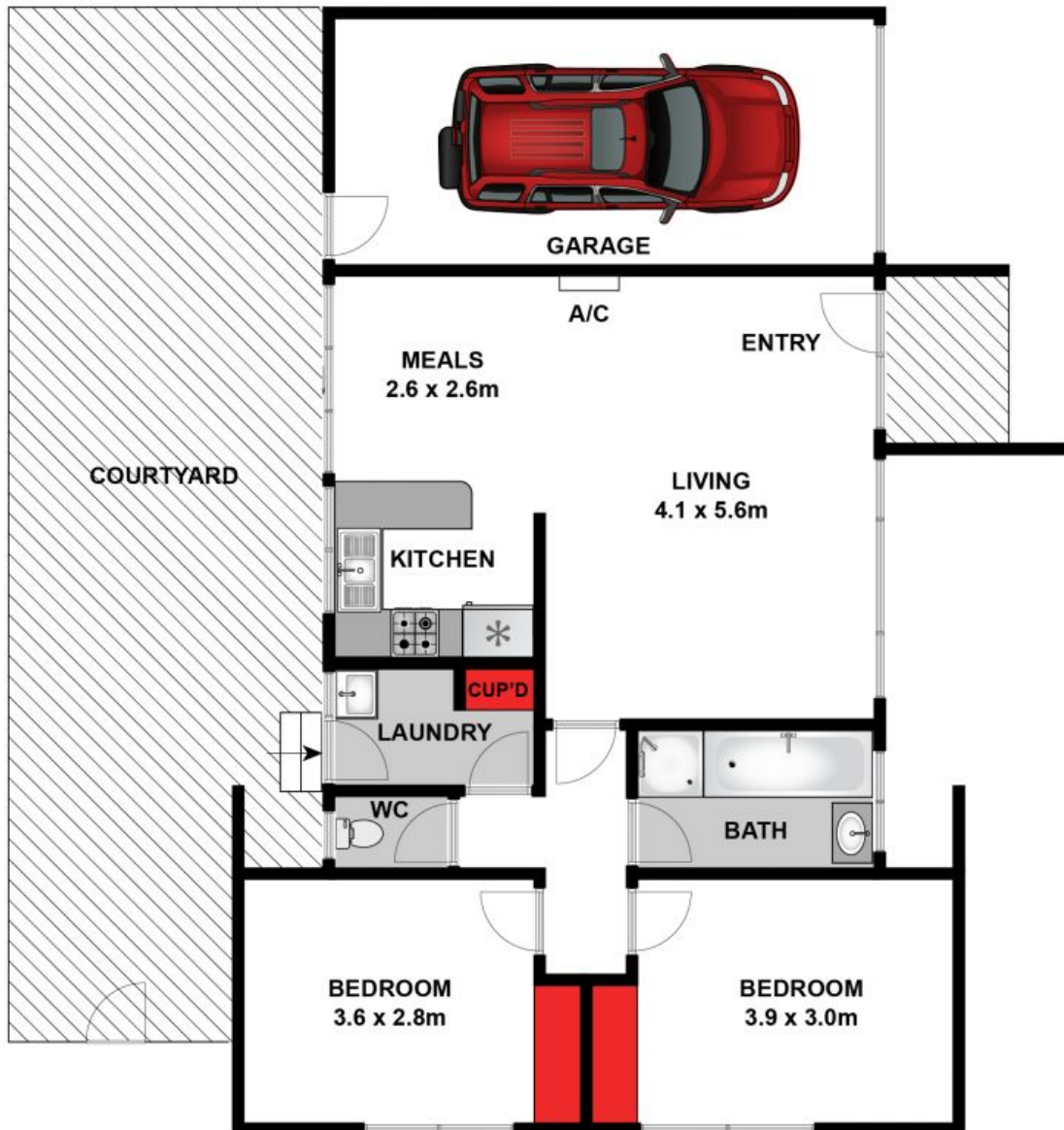
Land: 153 m²

HAYDEN

Karen Purcell

0448510143

karenp@haydenleopold.com.au



Approx. Area 78m²

Whilst bwrn.com.au has made every attempt to ensure the accuracy of the floor plan contained here, measurements are approximate and no responsibility is taken for any error, omission, or mis-statement. This plan is for illustrative purposes only.



6/798 Bellarine Highway, Leopold



6/798 Bellarine Highway

LEOPOLD, VIC