



15 Riviera Crescent OCEAN GROVE, VIC



3



2



2

## Contemporary Design Harnesses Water Views

Step into this light and airy contemporary home and you will feel like you are floating above the panoramic view over Blue Waters Lake, Barwon Estuary and Bass Strait. Located in the popular Old Ocean Grove Blue Waters Lake area and only minutes to the Barwon River. Six years old, the elevated 2-storey design, surrounded by low maintenance native landscaped gardens, captures the uninterrupted views, including the iconic Barwon Heads Bridge, majestic Bluff, busy shipping lane and migratory flocks over Connewarre wetlands.

The master suite, complete with ensuite, WIR buds directly off the scenic living hub. Two private bedrooms and a contemporary bathroom sit below on sleek polished concrete.

Enjoy an inspection at this striking home.

**Price:** \$950,000 - \$995,000

**Property Type:** House

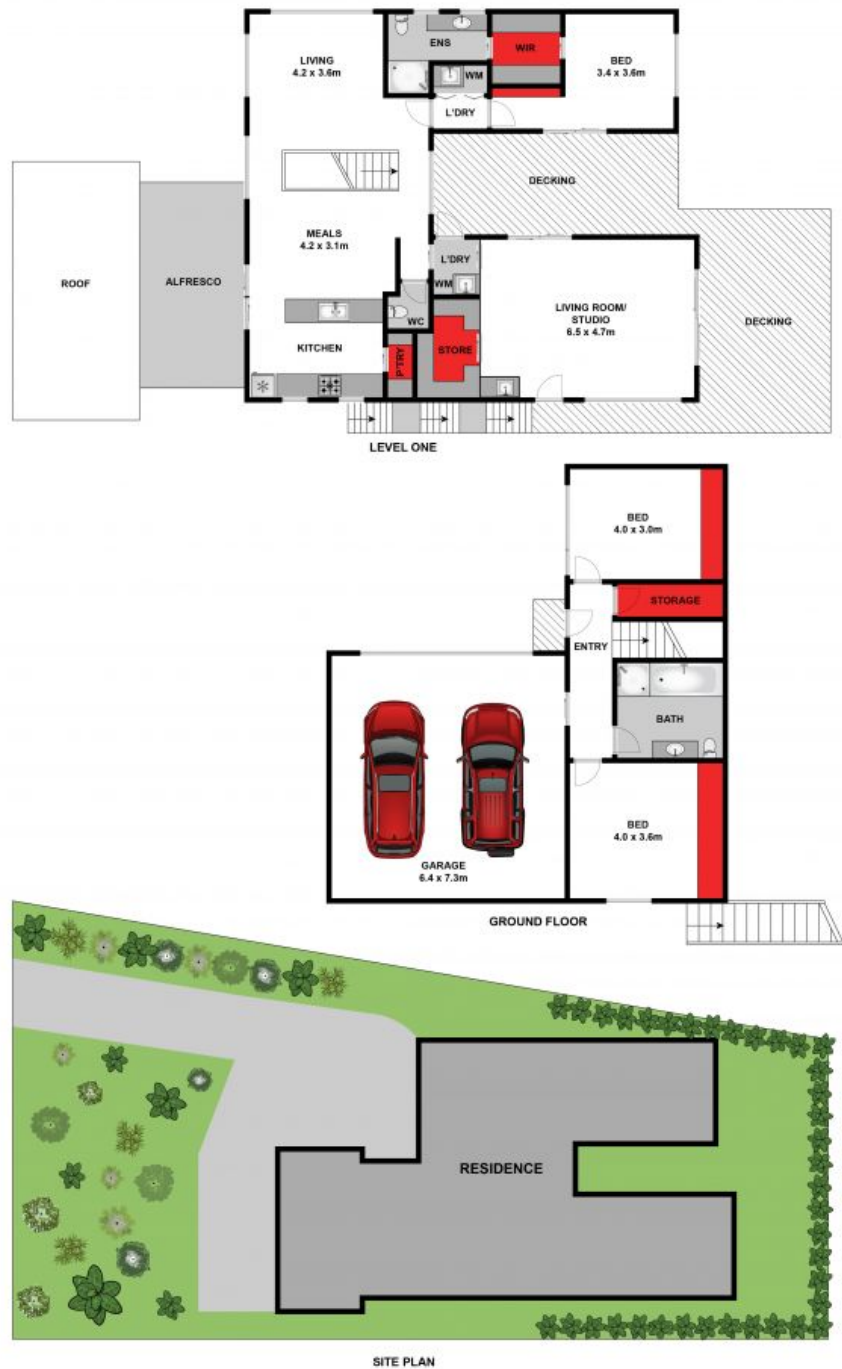
**Land:** 643 m2

# HAYDEN

**Penny Dawson**

0448510200

penny@haydenoceanogrove.com.



Approx. Area 298.9m<sup>2</sup>

Whilst bwmm.com.au has made every attempt to ensure the accuracy of the floor plan contained here, measurements are approximate and no responsibility is taken for any error, omission, or mis-statement. This plan is for illustrative purposes only.



15 Riviera Crescent, Ocean Grove



15 Riviera Crescent

OCEAN GROVE, VIC