



43 Rebecca Drive LEOPOLD, VIC



3



2



2

## Prime Location - Perfect Package

With an attractive street presence, behind the quaint cottage facade unveils this deceptively spacious light filled interior. A brick home set on single-level ease in superb condition, showcased on a neutral palette, accented with warm grey hues. Immaculate in presentation, the central hallway introduces the sleeping quarters, and continues its flow to the rear northern open living aspect. There is a formal lounge that has been distinctively zoned away from the open plan domain and is adorned in glorious northern light and finished in plush carpet. Outdoor living is spoilt with two alfresco areas, a side courtyard tucked within the surrounds of the house, and the rear undercover patio seamlessly connects from the open plan overlooking the easy-care landscaped garden. Foodies will relish on the Bosch 5-burner gas hob, augmented with a s/s wall oven, microwave nook and step-in pantry. The dining area is elegantly framed by the hanging pendant and bay window. The living area is a great spot to hang out in the bustle of the hub. The wet rooms are placed in their own niche, set across three separate rooms: a main bathroom; laundry (ext. access) and separate WC. The master bedroom enjoys privacy at the front of the house, with an ensuite & walk-in robe, and pleasant outlook to the rose garden. Climate comfort is assured with smart win

**Price:** \$420,000 - \$460,000

**Property Type:** House

**Land:** 654 m2

# HAYDEN

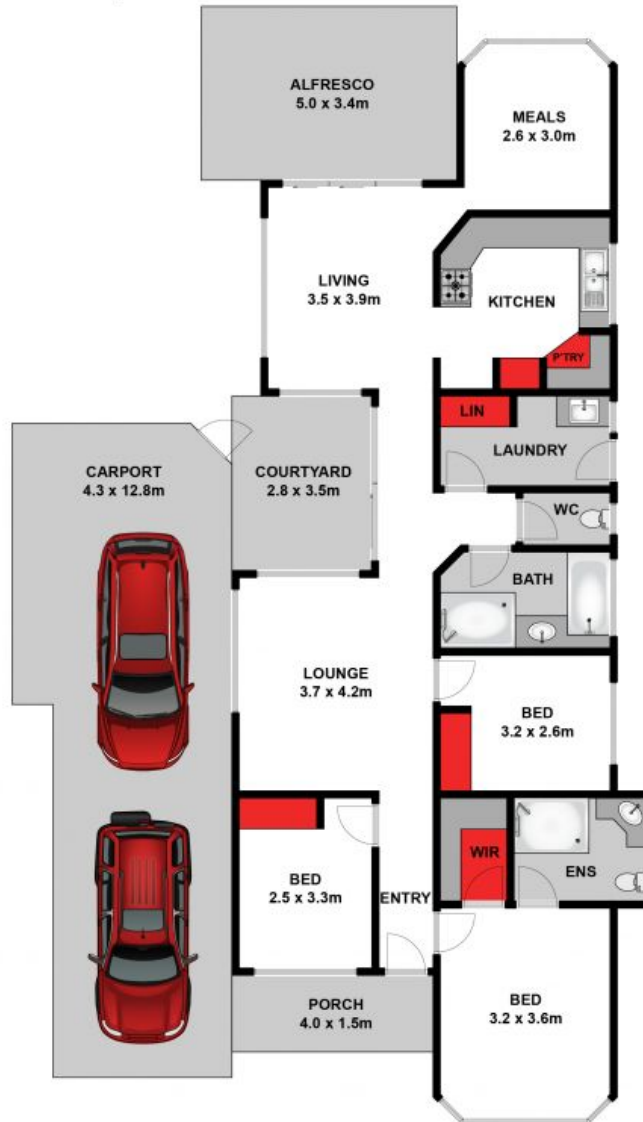
**Karen Purcell**

0448510143

karenp@haydenleopold.com.au



( NOT IN POSITION )



Approx. Area 117m<sup>2</sup>

Whilst [bwrn.com.au](http://bwrn.com.au) has made every attempt to ensure the accuracy of the floor plan contained here, measurements are approximate and no responsibility is taken for any error, omission, or mis-statement. This plan is for illustrative purposes only.



## 43 Rebecca Drive, Leopold



43 Rebecca Drive

LEOPOLD, VIC