



22 Greenbank Court LEOPOLD, VIC



4



2



2

## Family Haven in the Bellarine Gateway

Tucked away in a quiet court, set deep into the north facing block away from the street, this superb family residence boasts an attractive street presence. A brick home set on single-level ease, built at the turn of the millennium. this is a ripper of a property! This era of housing design offered large principal rooms with 'acres' of open space across the domain to sprawl the family. The exceptionally long sealed driveway and DLUG, is ideal for multiple parking with work vehicles, trailers, even a caravan. The discreet porch conveniently shields entry from the weather and provides a 'mudroom' alcove to kick off school shoes and boots. The versatile layout with distinct living zones will meet the demands of the modern family with: 4-bedrooms; 2-bathrooms and 2-lounge rooms. The minor sleeping quarters are separated at the rear in their own hallway. Each bedroom has carpet, BIR's and ceiling fans to keep air flow fresh. The master is private and offers comfort with the ensuite and his 'n' her WIR+dressing room. The hustle and bustle of everyday living will mill around in the open plan kitchen, casual eating and living area. It is bathed in natural northern light and flows effortlessly to the alfresco patio under the pergola. The u-shaped timber kitchen with a peninsula bench, is well equipped with a double wall oven, 4-burner gas

**Price:** \$480,000 - \$520,000  
**Property Type:** House  
**Land:** 782 m2

# HAYDEN

**Karen Purcell**

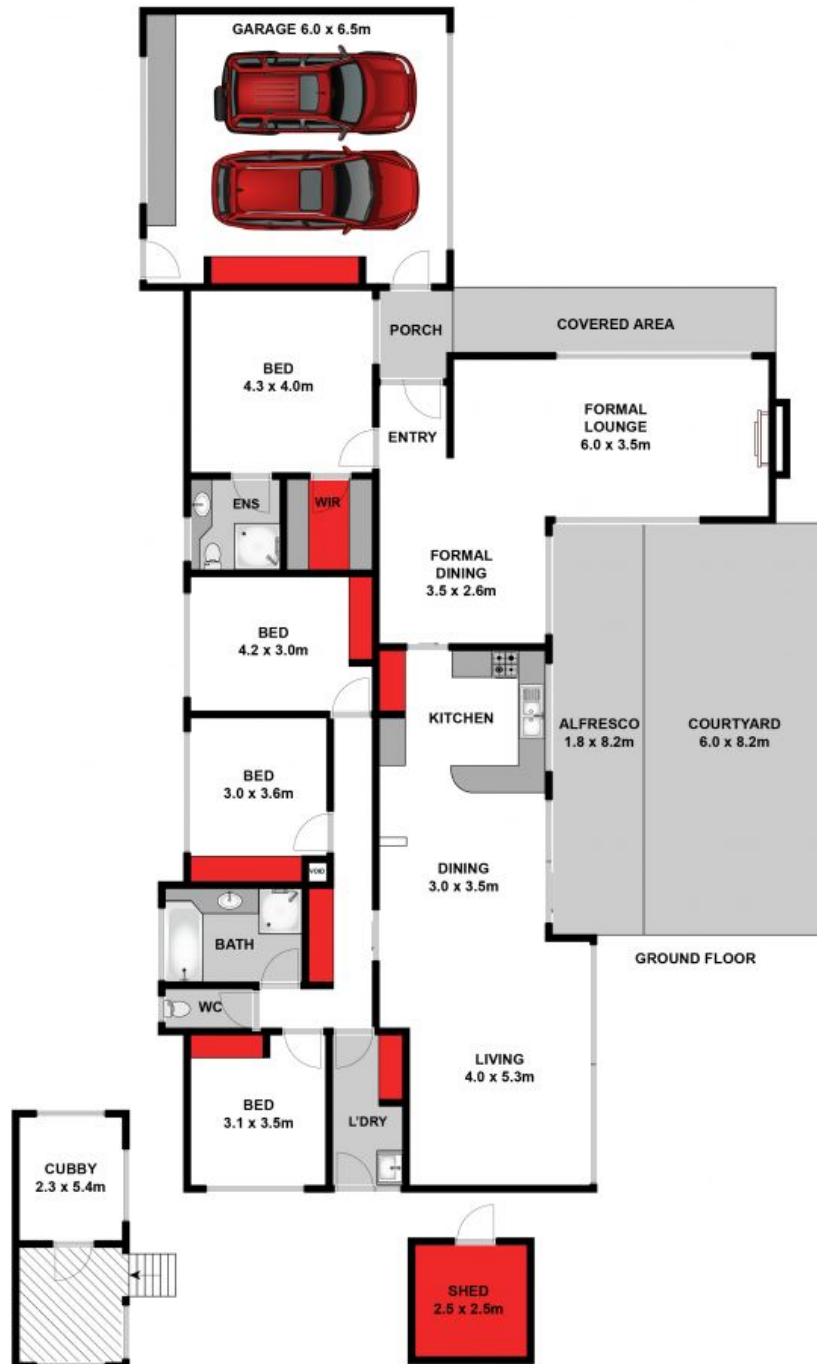
0448510143

karenp@haydenleopold.com.au

**Hugh McKewan**

0417 538 779

hugh@haydenoceanogrove.com.au



Approx. Area 178m<sup>2</sup>

Whilst [bwrn.com.au](http://bwrn.com.au) has made every attempt to ensure the accuracy of the floor plan contained here, measurements are approximate and no responsibility is taken for any error, omission, or mis-statement. This plan is for illustrative purposes only.



## 22 Greenbank Court, Leopold

**HAYDEN**