



22-24 Heathwood Way OCEAN GROVE, VIC



4



2



2

Plenty of Room to Play & Grow!

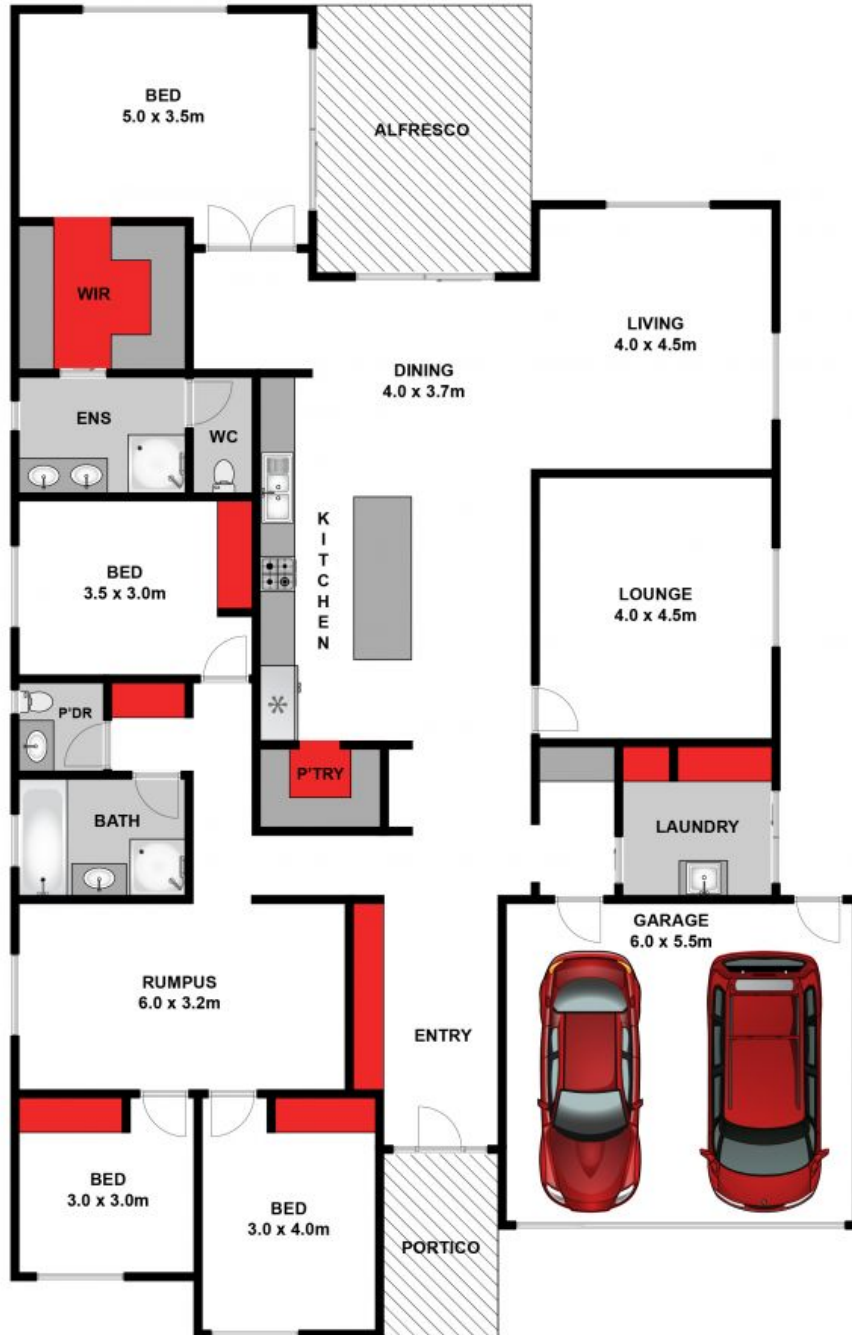
Tucked away in a wonderfully established area with all modern conveniences at hand, this fantastic family home boasts an overabundance of interior space, set upon a sizeable, yet low maintenance corner allotment.

Price: \$595,000 - \$650,000
Property Type: House
Land: 506 m2

HAYDEN

Hayden Real Estate -

Ocean Grove
 samh@hayden.com.au



Whilst bwrn.com.au has made every attempt to ensure the accuracy of the floor plan contained here, measurements are approximate and no responsibility is taken for any error, omission, or mis-statement. This plan is for illustrative purposes only.



22-24 Heathwood Way, Ocean Grove



22-24 Heathwood Way

OCEAN GROVE, VIC