



33 Anzac Avenue LEOPOLD, VIC



A Freshly Renovated Gem!

Recent renovations have breathed new life into this beautiful family home! Showcasing freshly painted interiors, a stunning near-new kitchen, and generous backyard, there's nothing left to do except move in and enjoy!

The Ash Road shops are just footsteps away, meaning you never have to venture far to grab a bite to eat or collect some last-minute groceries. Public transport and the Leopold Kindergarten are within walking distance from your front door, while easy access to Leopold Primary School and the Gateway Plaza is a huge plus. Just jump on the Bellarine Highway, and you're effortlessly connected to the Bellarine Peninsula and Geelong CBD.

Fresh white walls and new timber laminate floorboards create a light and breezy ambiance throughout the home. The peaceful front lounge entices you to sit back and relax with a cup of tea, while pendant lighting highlights the adjoining dining zone. Less than a year old, the chic kitchen makes a statement in all white. A walk-in pantry and stainless steel appliances (dishwasher, 900mm oven, gas hob, rangehood) perfectly blend style with practical

Price: \$480,000 - \$520,000

Property Type: House

Land: 669 m2

HAYDEN

Karen Purcell

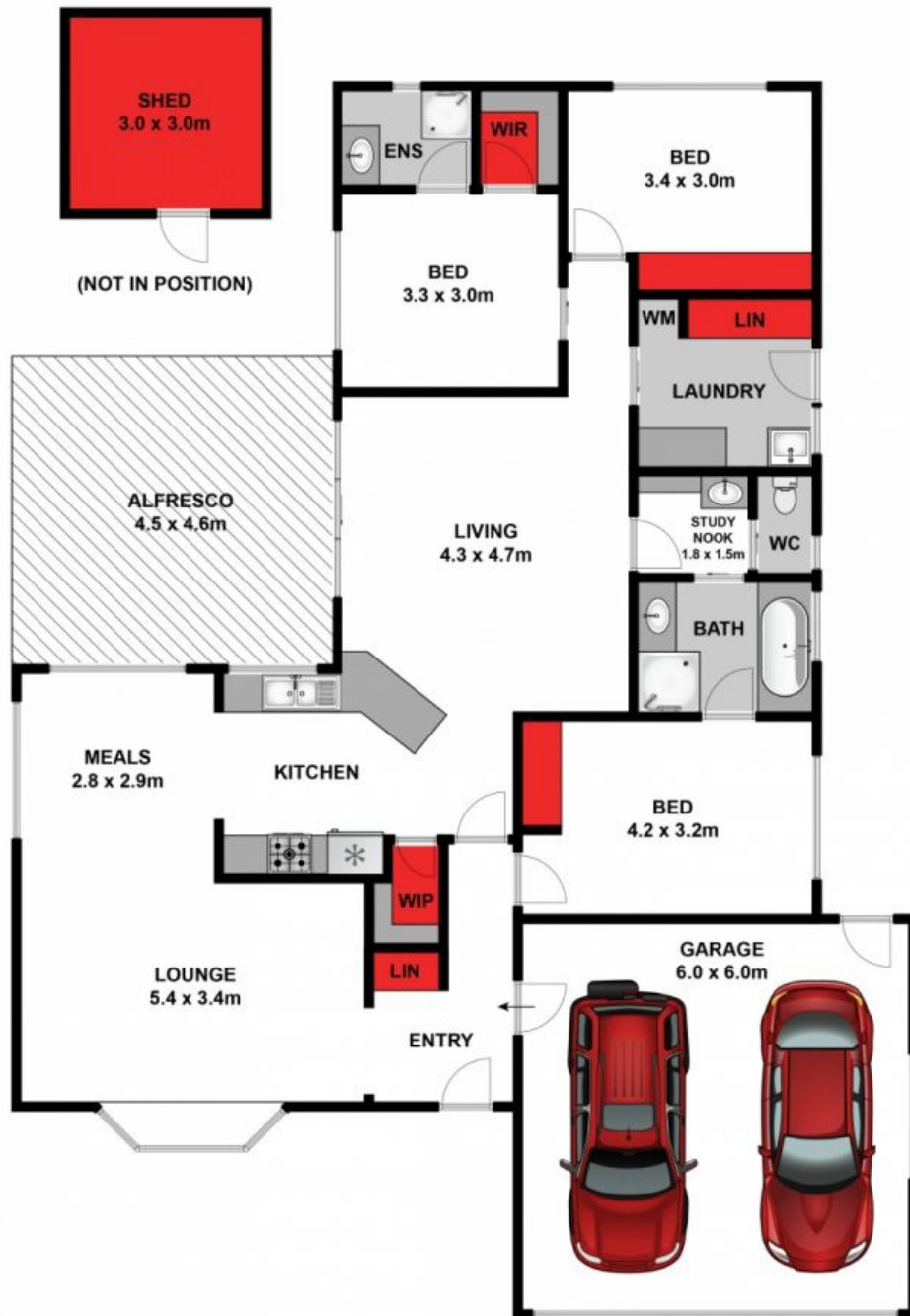
0448510143

karenp@haydenleopold.com.au

Karen Purcell

0448510143

karenp@haydenleopold.com.au



Approx. Area 138m²

Whilst bwrn.com.au has made every attempt to ensure the accuracy of the floor plan contained here, measurements are approximate and no responsibility is taken for any error, omission, or mis-statement. This plan is for illustrative purposes only.



33 Anzac Avenue, Leopold

HAYDEN

33 Anzac Avenue

LEOPOLD, VIC