



13 Athlon Avenue LEOPOLD, VIC



3



1



2

What A Beauty! Renovate, Subdivide, or Develop (STCA)!

You'll need to act quickly to secure this elevated prime 696m² (approx.) property with far-reaching views over the bay! With such a generous land size on offer, the opportunities are limitless ? renovate the original family home and enjoy the perks of a spacious backyard, subdivide the property, or wipe the entire slate clean and develop potentially lucrative townhouses (STCA).

The double lock-up garage with workshop provides secure parking, while the long driveway will accommodate several other vehicles.

Your mind will be ticking with ideas of renovations, sub-division, or development (STCA) as soon as you lay eyes on this property! Inspect ASAP!

Price: \$450,000 - \$480,000

Property Type: House

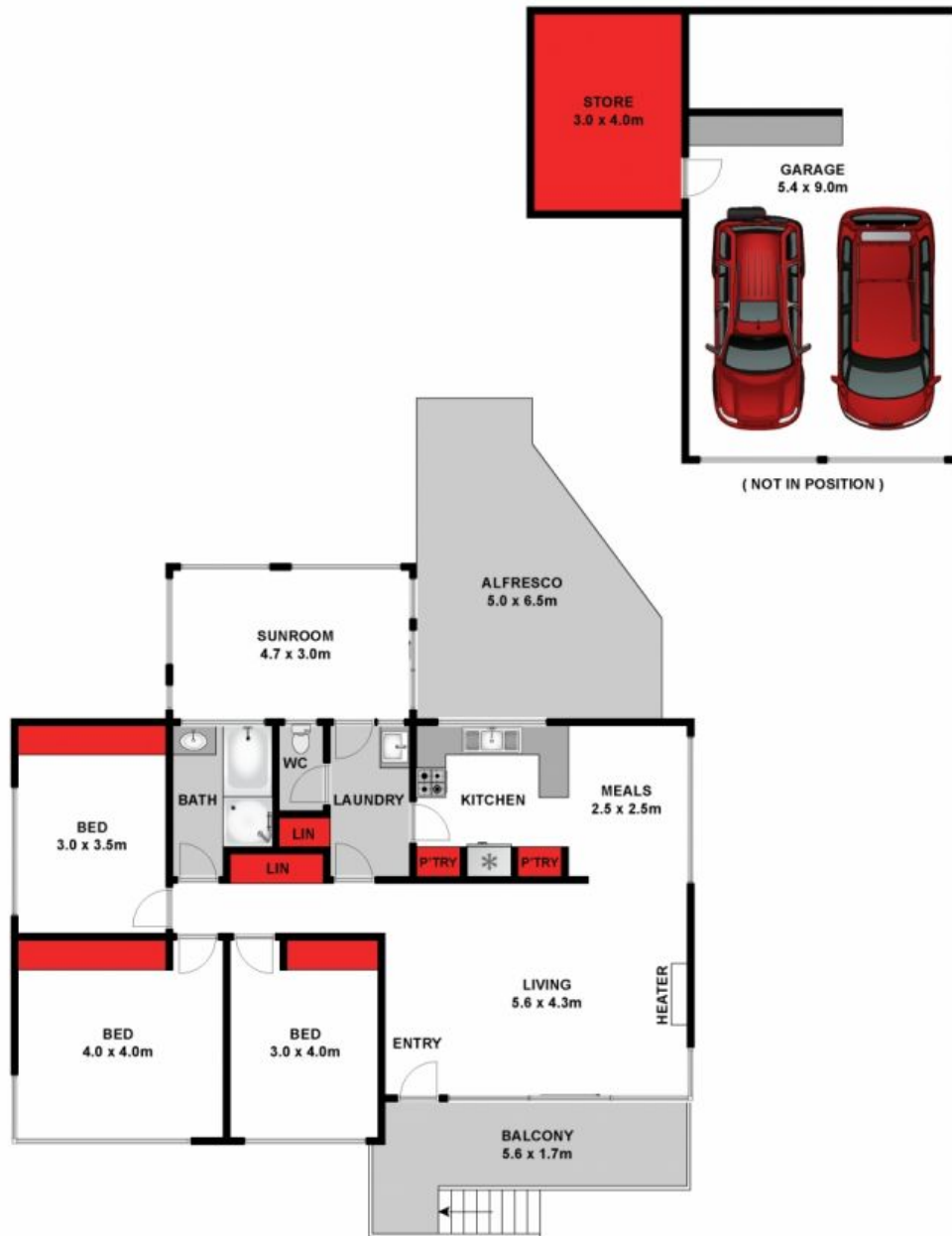
Land: 696 m²

HAYDEN

Karen Purcell

0448510143

karenp@haydenleopold.com.au



Approx. Area 124m²

Whilst bwr.com.au has made every attempt to ensure the accuracy of the floor plan contained here, measurements are approximate and no responsibility is taken for any error, omission, or mis-statement. This plan is for illustrative purposes only.



13 Athlon Avenue, Leopold



13 Athlon Avenue

LEOPOLD, VIC