



19 Edenborough Way BANNOCKBURN, VIC



3



2



1

Young Families, Downsizers & Investors ? This Is The One!

When it comes to easy family living, this property packs a punch! Close to all of life's amenities, yet far away from the hustle and bustle of city life, this rustic location highlights community living. Young families, downsizers, and investors ? this is the one!

The single carport provides undercover parking, while the driveway accommodates two vehicles. For those who love to entertain, just close the front gates and the carport effortlessly transforms into a private alfresco! Whether you're hosting a casual barbeque or a festive birthday party, this space provides the perfect setting.

So what are you waiting for? Inspect ASAP!

Price: \$400,000 - \$440,000

Property Type: House

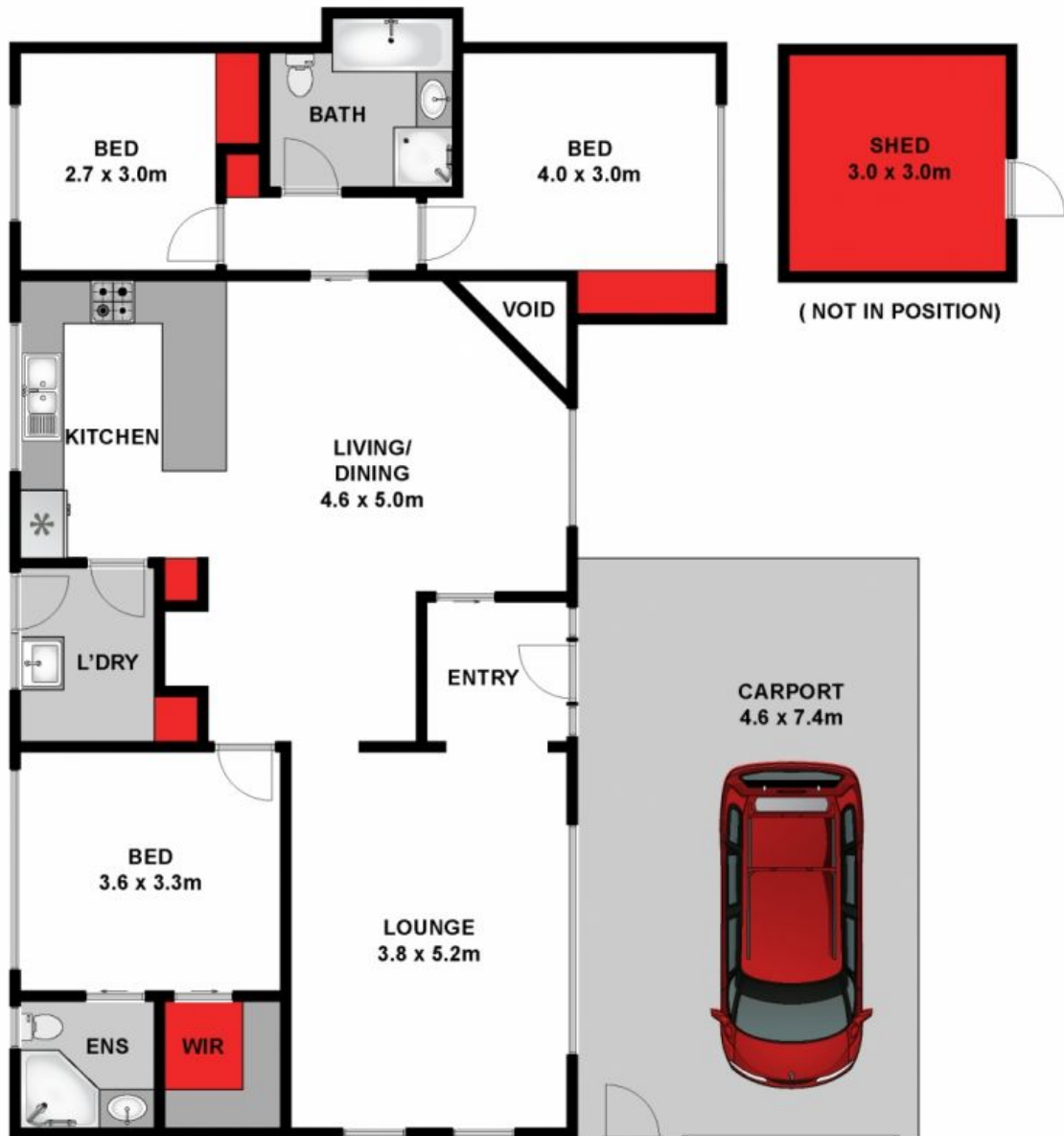
Land: 465 m2

HAYDEN

Karen Purcell

0448510143

karenp@haydenleopold.com.au



Approx. Area 120m²

Whilst bwm.com.au has made every attempt to ensure the accuracy of the floor plan contained here, measurements are approximate and no responsibility is taken for any error, omission, or mis-statement. This plan is for illustrative purposes only.



19 Edenborough Way, Bannockburn



19 Edenborough Way

BANNOCKBURN, VIC