



1/6 Viewbay Drive LEOPOLD, VIC



## Compact Living On Its Own Title!

Sitting proudly on its own title, this compact residence offers buyers the opportunity to secure a home in Leopold's most prized pocket! Whether you're dreaming of breaking into the property market, searching for the next addition to your investment portfolio, or wanting to downsize in a quiet and convenient locale ? this home will be at the top of your list!

The open plan living/meals/kitchen zone creates the focus of the home, with the surrounding gardens creating a leafy outlook from every window. The spacious kitchen is equipped with a built-in pantry, dishwasher, rangehood, and near-new Bosch stainless steel oven and gas hob.

A gas wall heater, air conditioner, and ceiling fan provide comfort.

The remote single lock-up garage provides secure parking, with the driveway offering potential for a single carport (STCA). A garden shed offers ample storage.

**Price:** \$355,000 - \$375,000

**Property Type:** House

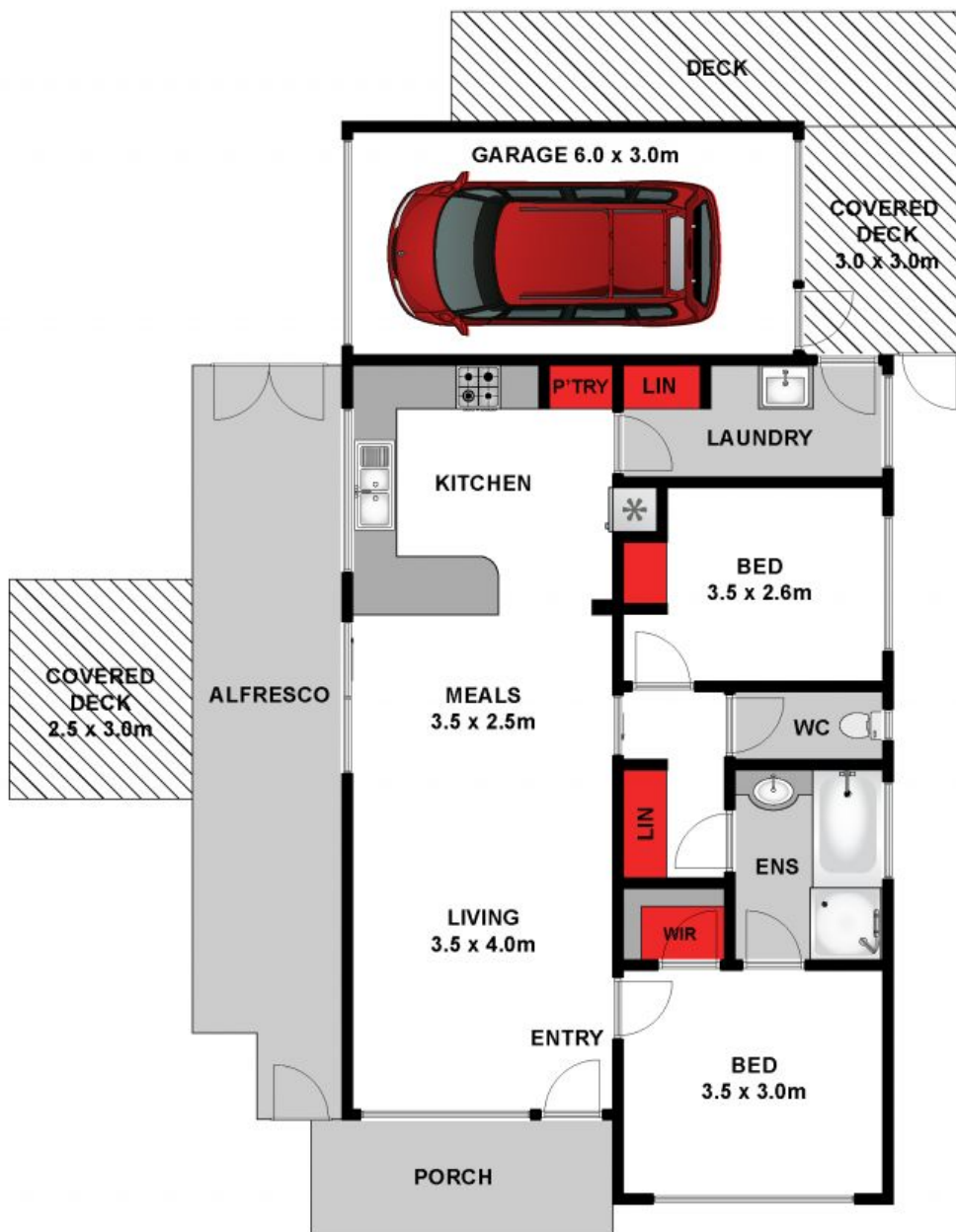
**Land:** 330 m2

# HAYDEN

**Karen Purcell**

0448510143

karenp@haydenleopold.com.au



Approx. Area 80m<sup>2</sup>

Whilst [bwrn.com.au](http://bwrn.com.au) has made every attempt to ensure the accuracy of the floor plan contained here, measurements are approximate and no responsibility is taken for any error, omission, or mis-statement. This plan is for illustrative purposes only.



**1/6 Viewbay Drive, Leopold**

**HAYDEN**

**1/6 Viewbay Drive**

**LEOPOLD, VIC**