



1/6 Viewbay Drive LEOPOLD, VIC



2



1



1

Compact Living On Its Own Title!

Sitting proudly on its own title, this compact residence offers buyers the opportunity to secure a home in Leopold's most prized pocket! Whether you're dreaming of breaking into the property market, searching for the next addition to your investment portfolio, or wanting to downsize in a quiet and convenient locale? this home will be at the top of your list!

The open plan living/meals/kitchen zone creates the focus of the home, with the surrounding gardens creating a leafy outlook from every window. The spacious kitchen is equipped with a built-in pantry, dishwasher, rangehood, and near-new Bosch stainless steel oven and gas hob.

A gas wall heater, air conditioner, and ceiling fan provide comfort.

The remote single lock-up garage provides secure parking, with the driveway offering potential for a single carport (STCA). A garden shed offers ample storage.

Price: \$355,000 - \$375,000

Property Type: House

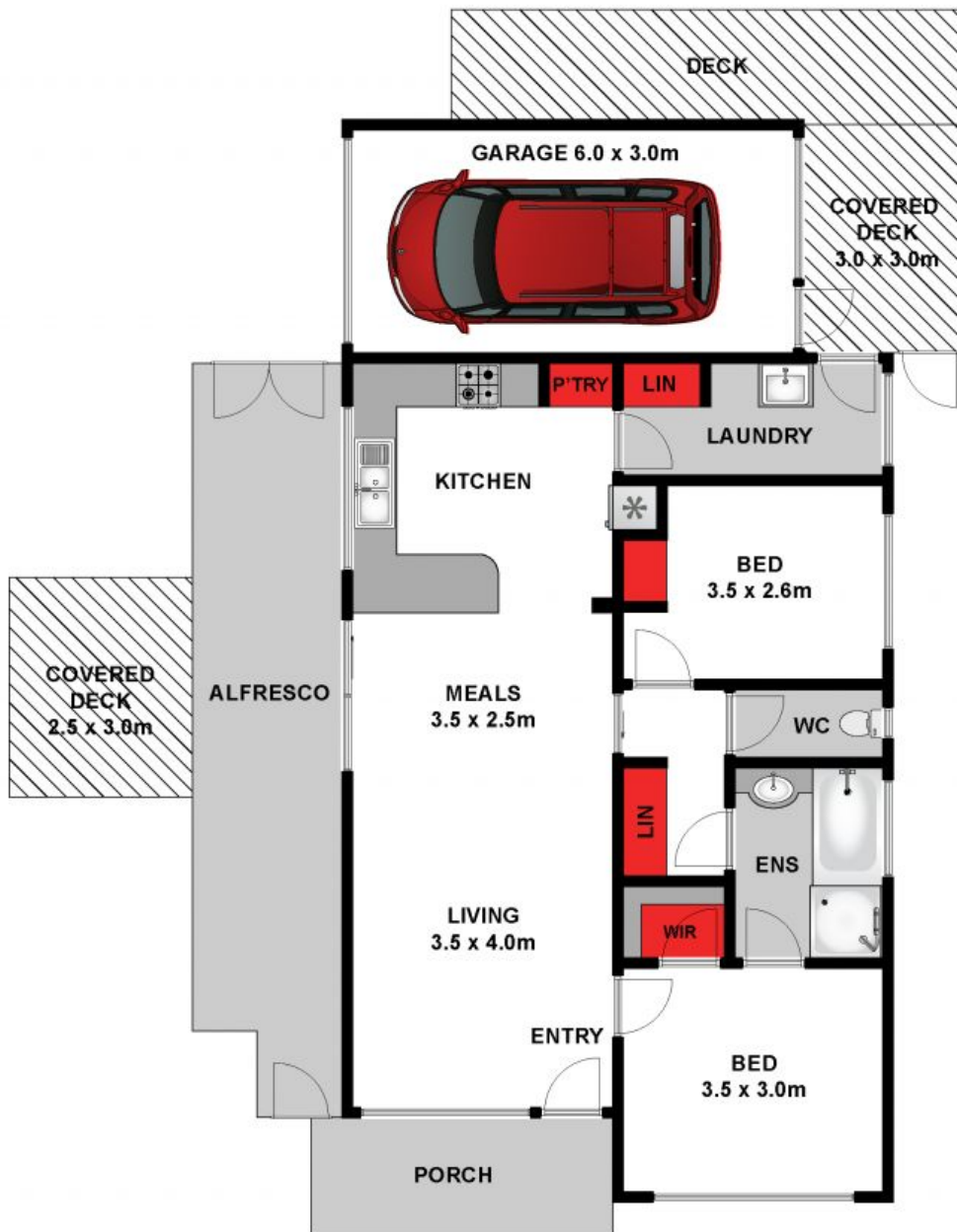
Land: 330 m2

HAYDEN

Karen Purcell

0448510143

karenp@haydenleopold.com.au



Approx. Area 80m²

Whilst bwrn.com.au has made every attempt to ensure the accuracy of the floor plan contained here, measurements are approximate and no responsibility is taken for any error, omission, or mis-statement. This plan is for illustrative purposes only.



1/6 Viewbay Drive, Leopold



1/6 Viewbay Drive

LEOPOLD, VIC