



6a Myuna Street LEOPOLD, VIC



3



1



1

## Beautifully Updated Home Close To Life's Essentials!

You'll be charmed the moment you lay eyes on this beautifully updated home! Featuring chic interiors, a near-new kitchen, and gorgeous gardens, this home ticks all of the boxes for blissful living!

An abundance of natural light sweeps through the open plan living zone, with the lush front lawn and leafy side garden creating a picturesque backdrop for you to enjoy through every window. This main hub is the perfect spot to unwind at the end of a long day, while the front timber deck is ideal for soaking up the sun's rays.

A split-system air conditioner and ceiling fans keep you comfortable in all seasons.

Located at the rear of the home, the dedicated parking space offers the potential for a single carport (STCA).

**Price:** \$390,000 - \$410,000

**Property Type:** House

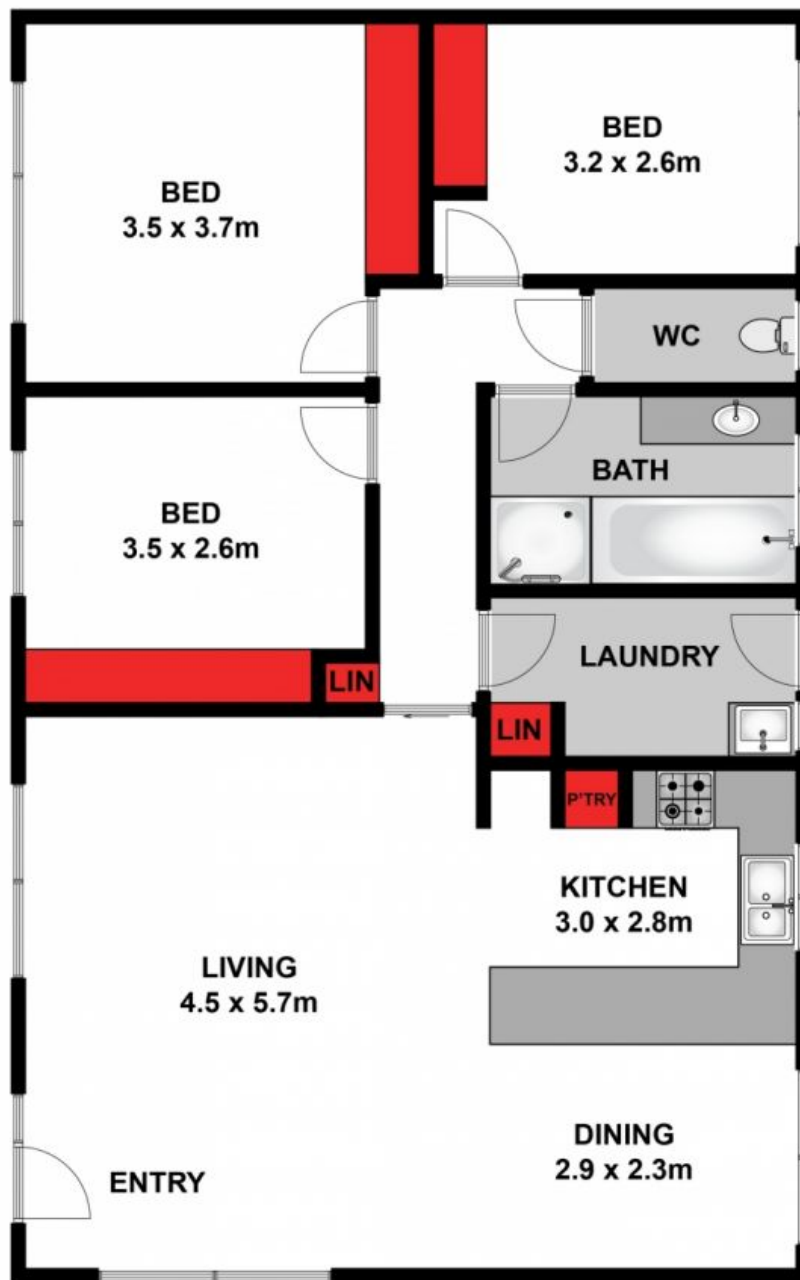
**Land:** 320 m2

# HAYDEN

**Karen Purcell**

0448510143

karenp@haydenleopold.com.au



Approx. Area 103m<sup>2</sup>

Whilst [bwrn.com.au](http://bwrn.com.au) has made every attempt to ensure the accuracy of the floor plan contained here, measurements are approximate and no responsibility is taken for any error, omission, or mis-statement. This plan is for illustrative purposes only.



**6A Myuna Street, Leopold**



**6a Myuna Street**

**LEOPOLD, VIC**