



30 Penleigh Crescent OCEAN GROVE, VIC



4



2



2

## Relaxed Family Living in Peaceful Surrounds

Introduced by a private, established front garden, this 4 bedroom home offers relaxed, family living with eco-friendly highlights. Set across one level, the wide entry hallway leads to a bright and spacious open plan space capturing the morning sun. Clever design ensures privacy with the Master suite and front sitting room able to be closed off from the main living area and all with double-glazed windows.

Family living spaces in this home are optimised for flexibility. The front sitting room is an ideal parent's retreat whilst a large, virtually sound proof room off the family room offers potential for a media room, home office or kids playroom. Double glazing on the eastern and northern sides of the house ensure climate control efficiency and block-out roller blinds in the living areas are complemented by pelmets and complete block-out curtains in the bedrooms. Solar power, DLUG, garden, drip irrigation, NBN connectivity and ducted evaporative cooling/heating; and side access for a boat and/or caravan are additional features.

**Price:** \$650,000 - \$710,000  
**Property Type:** House  
**Land:** 602 m2

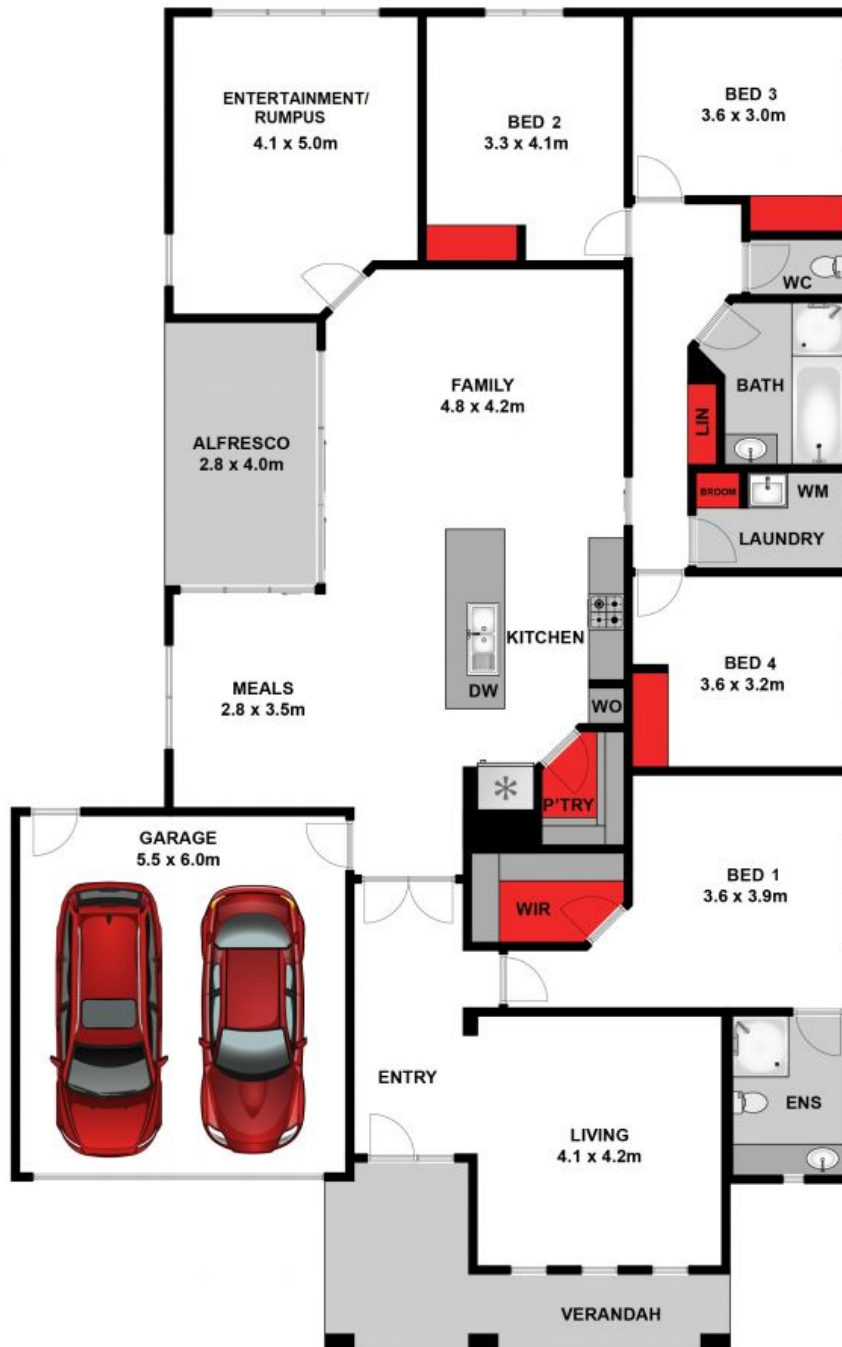
# HAYDEN

**Hayden Real Estate Penny Dawson**

0448510200

**Ocean Grove**  
 samn@hayden.com.au

penny@haydenoceanogrove.com.



Whilst [bwrn.com.au](http://bwrn.com.au) has made every attempt to ensure the accuracy of the floor plan contained here, measurements are approximate and no responsibility is taken for any error, omission, or mis-statement. This plan is for illustrative purposes only.



**30 Penleigh Crescent, Ocean Grove**



**30 Penleigh Crescent**

**OCEAN GROVE, VIC**