



12 Darrambal Crescent LEOPOLD, VIC



3



1



1

The Ultimate Dream Starter!

Whether you're dreaming of owning your first home, searching for a great renovation project (STCA), or looking for the next addition to your investment portfolio, this home will be at the top of your list! Occupying a generous 618m2 (approx.) corner allotment with a huge backyard, you'll need to act quickly to avoid disappointment!

The original interiors grant you the option to move straight in or to renovate to create your dream home (STCA). Overlooking the front garden, the lounge provides a relaxing setting and flows through to the dining and kitchen zone. The kitchen is well equipped with a built-in pantry, oven, gas hob, and rangehood.

A split-system air conditioner keeps you comfortable in all seasons.

The spacious north-west facing backyard will impress the moment you lay eyes on it! The expansive alfresco deck soaks up the sunshine, putting the elements in place for sensational outdoor entertaining whether it's a casual family gathering or a night of birthday celebrations. The lush lawn provides an oasis for children and pets who love to run and play, wh

Price: \$410,000 - \$450,000

Property Type: House

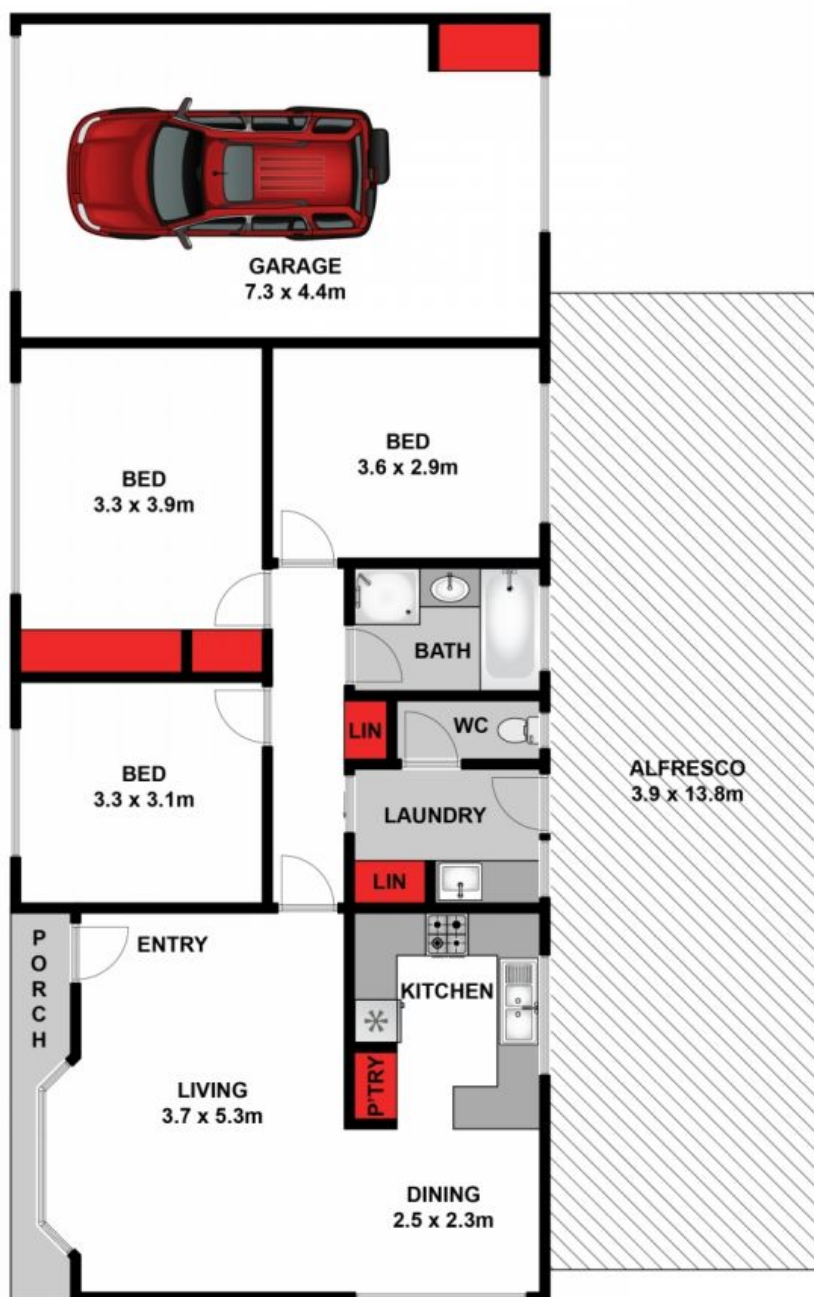
Land: 618 m2

HAYDEN

Karen Purcell

0448510143

karenp@haydenleopold.com.au



Approx. Area 94m²

Whilst bwrn.com.au has made every attempt to ensure the accuracy of the floor plan contained here, measurements are approximate and no responsibility is taken for any error, omission, or mis-statement. This plan is for illustrative purposes only.



12 Darrambal Crescent, Leopold



12 Darrambal Crescent

LEOPOLD, VIC