



50 Coolangatta Drive CLIFTON SPRINGS, VIC



4



2



2

## Bountiful Bay Views, Yours Forever

Set up for ease of living across two levels of modern, highly functional design, this four bedroom family home is offering way more than meets the eye. Hugely desired, sunny north orientation connects with priceless aquamarine views, perfectly framing an enviable bayside lifestyle, ready to enjoy.

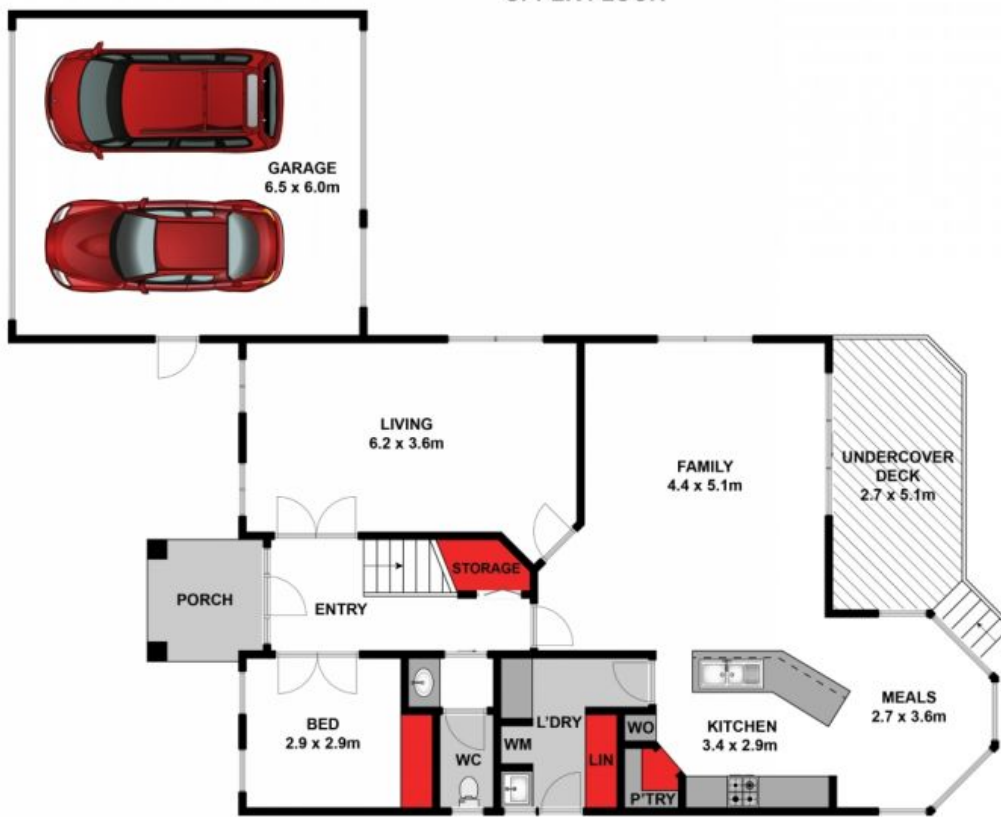
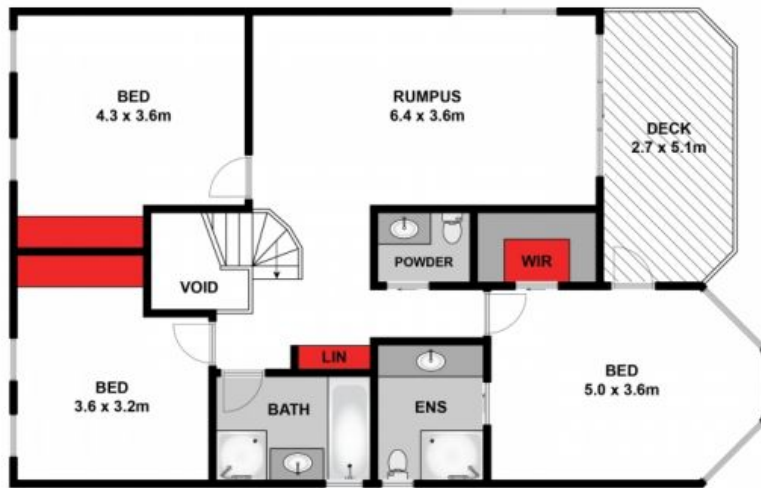
The lower level accommodates the open plan living, meals and kitchen area, enjoying direct access onto the sunny alfresco deck and patio beyond. Screened by mature Pittosporums providing exceptional privacy, you are able to relax and entertain to your heart's content out here.

**Price:** \$670,000-\$730,000  
**Property Type:** House  
**Land:** 591 m2

# HAYDEN

Hayden Real Estate -

**Ocean Grove**  
 samn@hayden.com.au



Approx. Area 220m<sup>2</sup>

Whilst [bwrn.com.au](http://bwrn.com.au) has made every attempt to ensure the accuracy of the floor plan contained here, measurements are approximate and no responsibility is taken for any error, omission, or mis-statement. This plan is for illustrative purposes only.



**50 Coolangatta Drive, Clifton Springs**



**50 Coolangatta Drive**

**CLIFTON SPRINGS, VIC**