



1/44-46 Ash Road LEOPOLD, VIC



2



1



1

When Convenience Is Key!

Offering the perfect blend of compact, low-maintenance, and convenient living, this home is an absolute gem!

Featuring a few updates throughout, including floating floorboards and a stylish bathroom, this home is ready for you to move straight into while also offering scope for further enhancement (STCA).

The open plan living/meals/kitchen zone welcomes you into the home and creates ample space for when family and friends come to visit. The spotless kitchen is well equipped with a built-in pantry, oven, electric cooktop, and rangehood.

Price: \$345,000 - \$369,000

Property Type: House

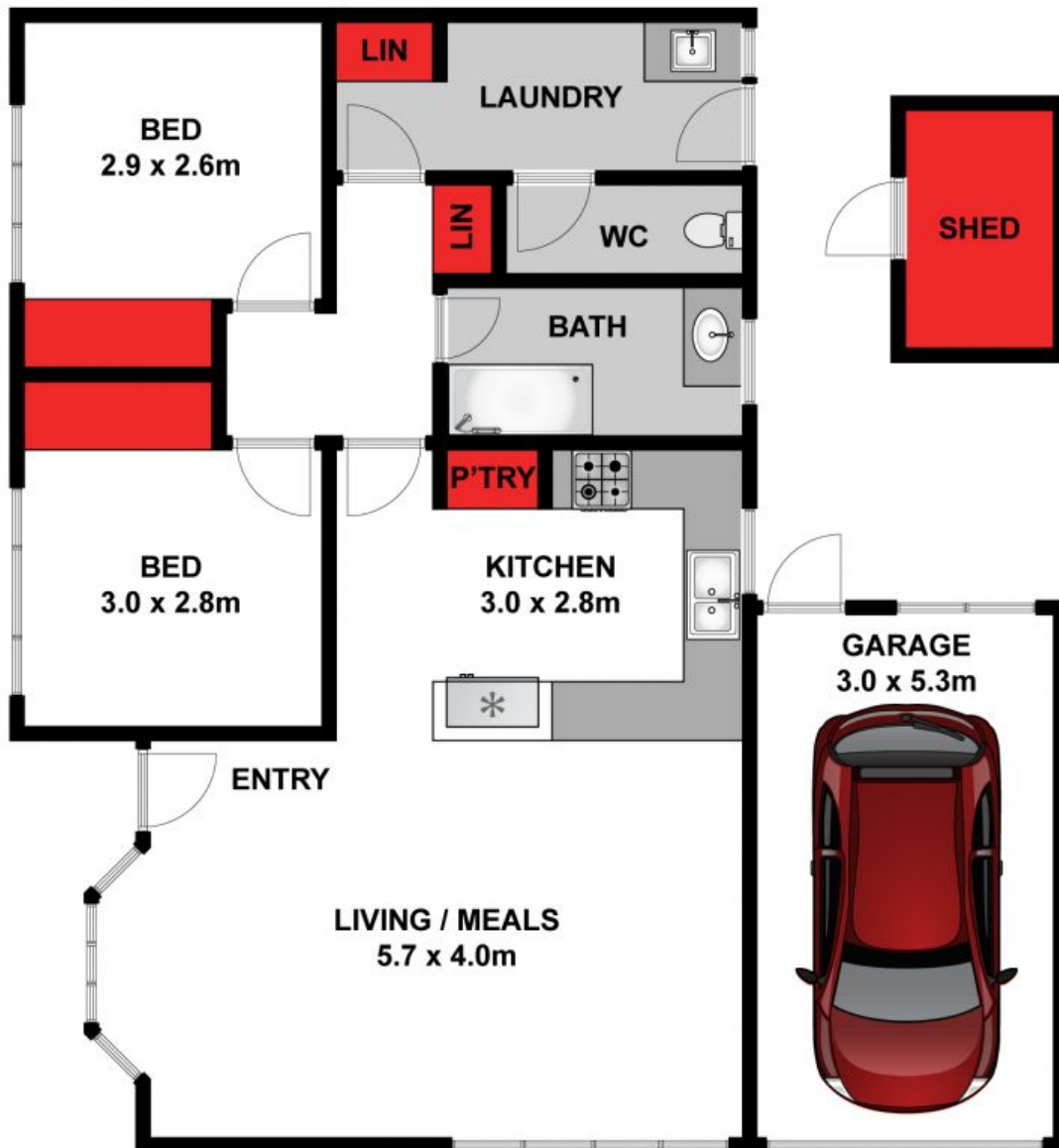
Land: 171 m2

HAYDEN

Karen Purcell

0448510143

karenp@haydenleopold.com.au



Approx. Area 78m²

Whilst bwrn.com.au has made every attempt to ensure the accuracy of the floor plan contained here, measurements are approximate and no responsibility is taken for any error, omission, or mis-statement. This plan is for illustrative purposes only.



1/44 Ash Road, Leopold

HAYDEN

1/44-46 Ash Road

LEOPOLD, VIC