



28 Glengarwyn Road LEOPOLD, VIC



3



2



2

## Development Delight in Family Friendly Leopold!

The search for residential land in Leopold stops now! Set on a huge corner block, this north facing 3 bedroom home is an ideal chance to renovate, flip or develop (STCA) With views and a huge amount of space, the options are endless for owner occupiers or investors. Zoning: Residential Growth Zone ? Schedule 2.

**Price:** \$480,000 - \$520,000

**Property Type:** House

**Land:** 854 m2

# HAYDEN

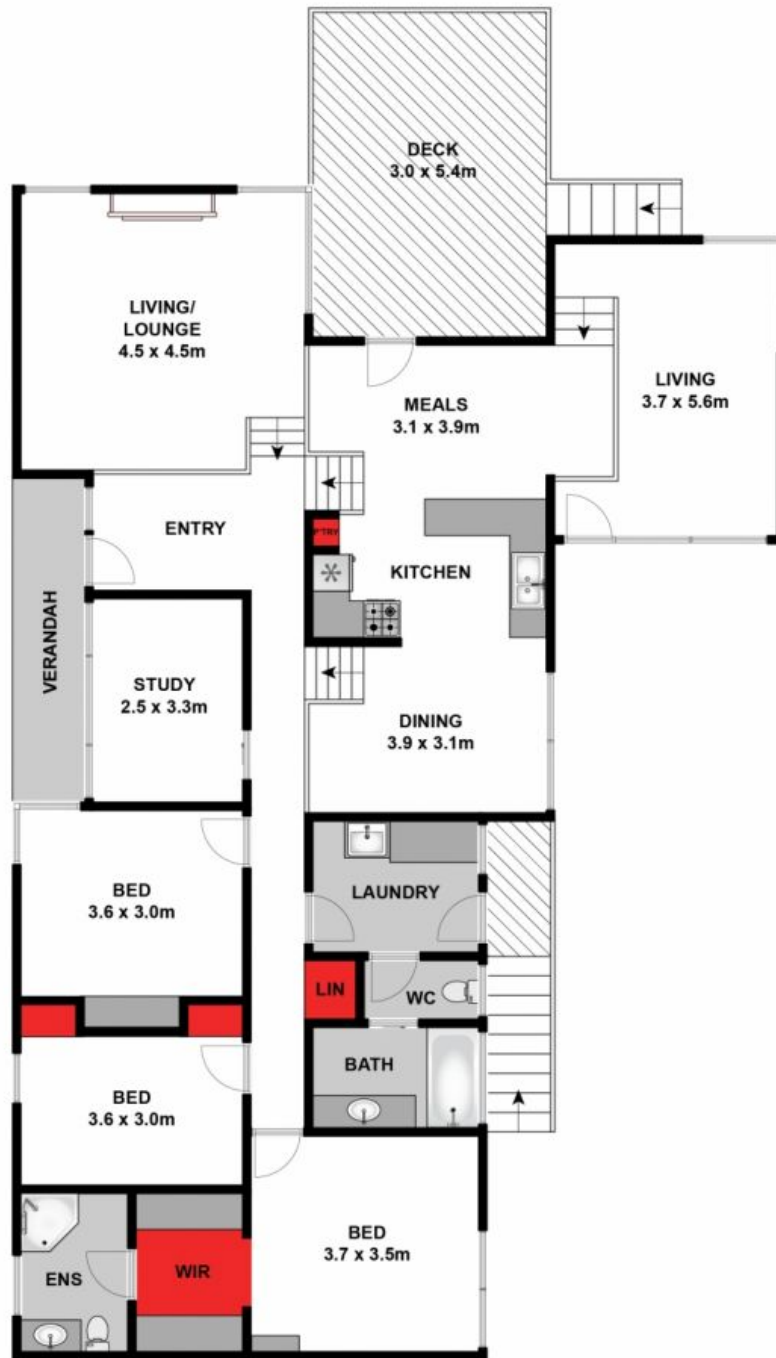
**Hayden Real Estate Karen Purcell**

0448510143

**Leopold**

sam@hayden.com.au

karen@haydenleopold.com.au



Whilst [bwrn.com.au](http://bwrn.com.au) has made every attempt to ensure the accuracy of the floor plan contained here, measurements are approximate and no responsibility is taken for any error, omission, or mis-statement. This plan is for illustrative purposes only.



**28 Glengarwyn Road, Leopold**

**HAYDEN**

**28 Glengarwyn Road**

**LEOPOLD, VIC**