



132 Christies Road LEOPOLD, VIC



3



2



2

## Embrace A Lifestyle of Ease & Convenience!

If you're searching for easy and convenient living, then this is the one for you! Featuring a generous backyard with side vehicle access, this home is a terrific choice for first homebuyers, investors, tradies, or those simply looking for an excellent home!

With a bus stop just across the road, convenience is key. Young families will love that kindergartens and the Leopold Primary School are within easy reach, while the nearby Bellarine Rail Trail inspires the whole family to venture outside. The Dorothy Street shops are close by for essentials, while the popular Gateway Plaza will leave you spoilt for choice.

The remote double lock-up garage features internal access, while side vehicle access to the backyard is perfect for storing caravans, boats, and trailers.

Inspect ASAP!

**Price:** \$465,000 - \$510,000

**Property Type:** House

**Land:** 510 m2

HAYDEN

**Karen Purcell**

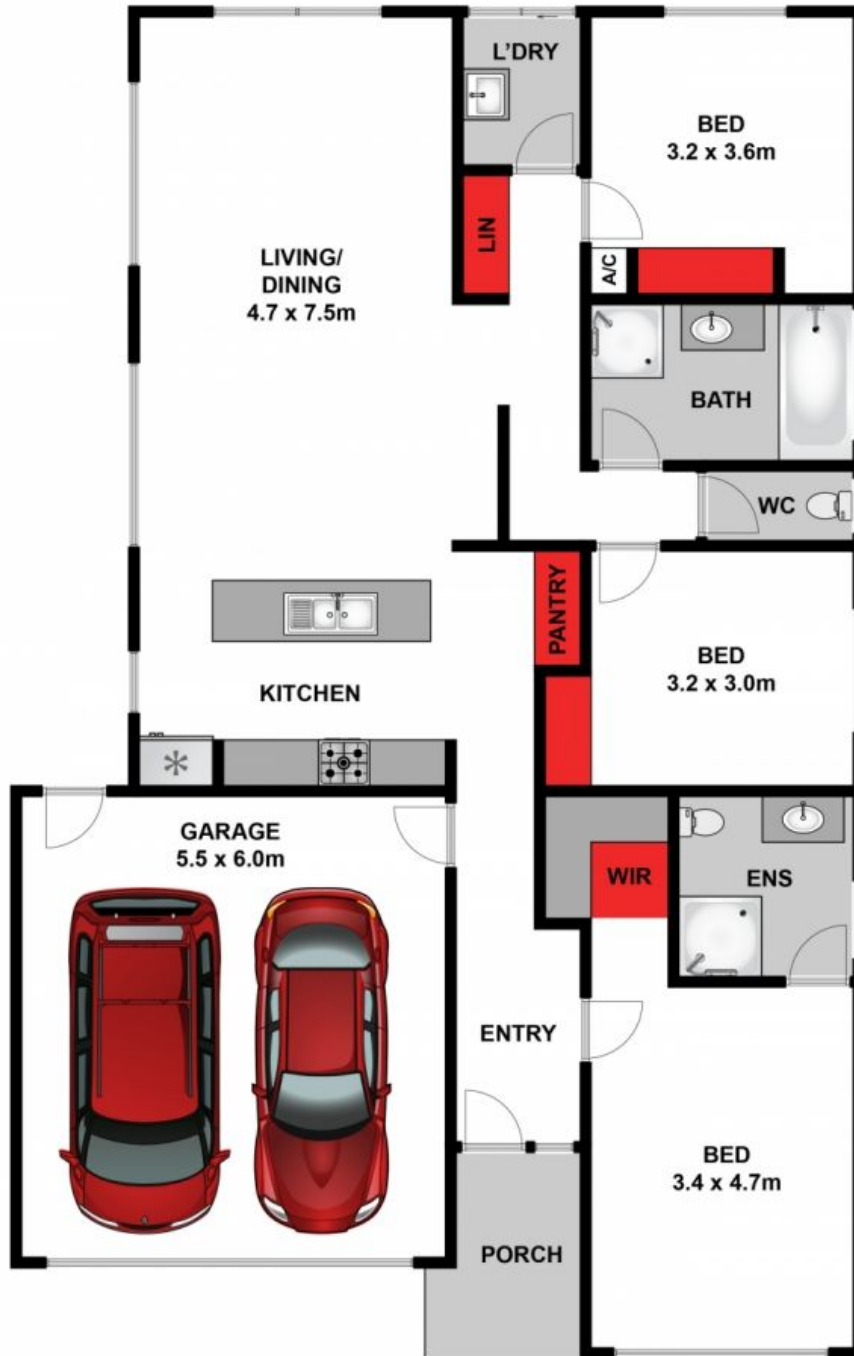
0448510143

karenp@haydenleopold.com.au

**Hugh McKewan**

0417 538 779

hugh@haydenoceanogrove.com.au



Approx. Area 130m<sup>2</sup>

Whilst [bwrn.com.au](http://bwrn.com.au) has made every attempt to ensure the accuracy of the floor plan contained here, measurements are approximate and no responsibility is taken for any error, omission, or mis-statement. This plan is for illustrative purposes only.



**132 Christies Road, Leopold**

**HAYDEN**

**132 Christies Road**

**LEOPOLD, VIC**