



6 Teatree Close OCEAN GROVE, VIC



3



2



2

Coastal Catch of the Day!

A solid brick veneer in old Grove that could tick along nicely as an investment or be snapped up by a savvy buyer to make their own mark. With the first stage of sprucing complete, now it is time to hand the baton onto its new owners to finish off.

Ideally located on a quiet street. A stand-out is the spacious, open-plan living zone that greets you when you enter 6 Teatree Close. This light filled room with hard wood floors is the heart of the home.

Spilling off the central area are three double bedrooms, all with BIRs. The main is suitably positioned at one end of this property with its own en suite and generous WIR.

AUCTION TERMS: 10% deposit, balance 30/60 days.

Price: \$610,000 - \$660,000

Property Type: House

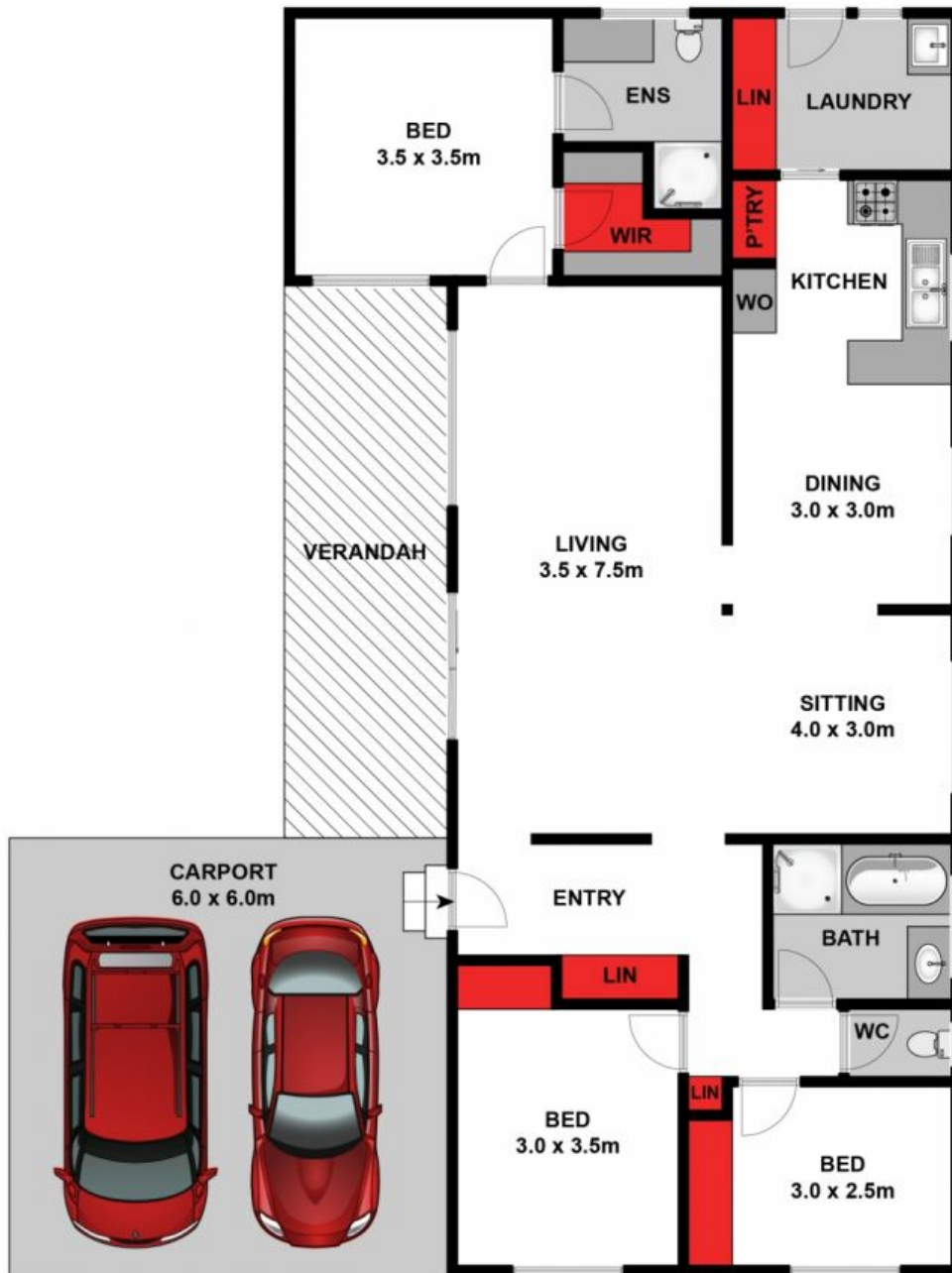
Land: 632 m2

HAYDEN

Penny Dawson

0448510200

penny@haydenoceanogrove.com.



Whilst bwrn.com.au has made every attempt to ensure the accuracy of the floor plan contained here, measurements are approximate and no responsibility is taken for any error, omission, or mis-statement. This plan is for illustrative purposes only.



6 Teatree Close, Ocean Grove

HAYDEN

6 Teatree Close

OCEAN GROVE, VIC