



28 Glengarwyn Road LEOPOLD, VIC



3



2



2

Family Home In Central Leopold

Please ensure that you confirm your attendance at each open for inspection scheduled with Hayden Real Estate by phoning (03) 5250 1666. Inspections are subject to cancellation and change with minimal notice. Please also note that we do not accept 1Form applications

Price: UNDER APPLICATION

Property Type: House

Date Available: Monday, 4th November 2019

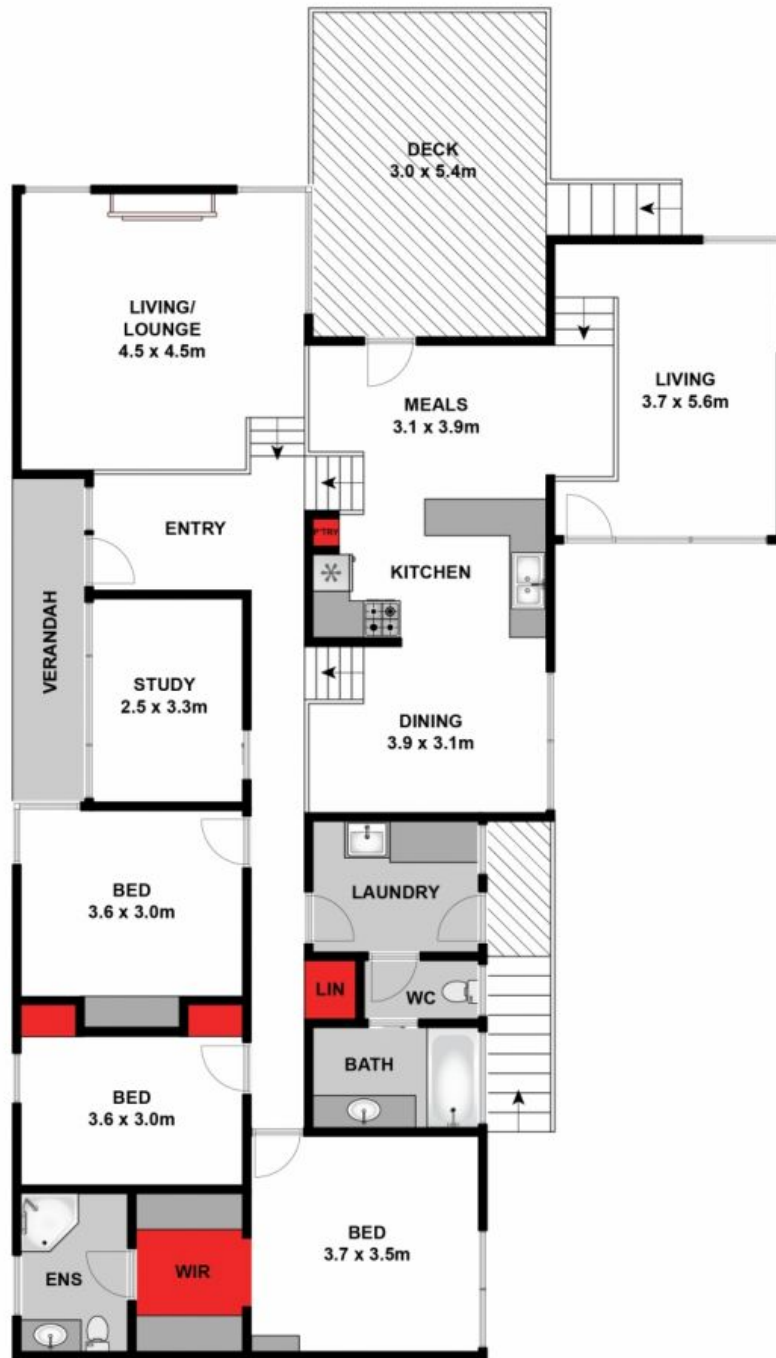
Land: 854 m2

HAYDEN

Hayden Real Estate -

Leopold

samh@hayden.com.au



Whilst bwrn.com.au has made every attempt to ensure the accuracy of the floor plan contained here, measurements are approximate and no responsibility is taken for any error, omission, or mis-statement. This plan is for illustrative purposes only.



28 Glengarwyn Road, Leopold

HAYDEN

28 Glengarwyn Road

LEOPOLD, VIC