



47 Allambie Street LEOPOLD, VIC



3



2



2

Beautifully Updated Leopold Gem!

With nothing left to do except move in and enjoy, this beautifully updated home is simply irresistible!

An effortless lifestyle is yours to keep with the Kanimbla Reserve parkland, public transport, and Ash Road shops all positioned a leisurely stroll from your front door. Young families are taken good care of with both the Leopold Kindergarten and Leopold Primary School within easy walking distance. The popular Gateway Plaza is conveniently close by, along with the Leopold Memorial Reserve sporting grounds.

A split-system air conditioner provides modern comfort.

Outside, the elevated alfresco deck soaks up the sunlight and steps down to the generous backyard - perfect for summer barbecues or simply kicking back on the weekends!

You'll need to act swiftly to snap up this Leopold gem! Inspect ASAP!

Price: \$480,000 - \$500,000

Property Type: House

Land: 624 m2

HAYDEN

Karen Purcell

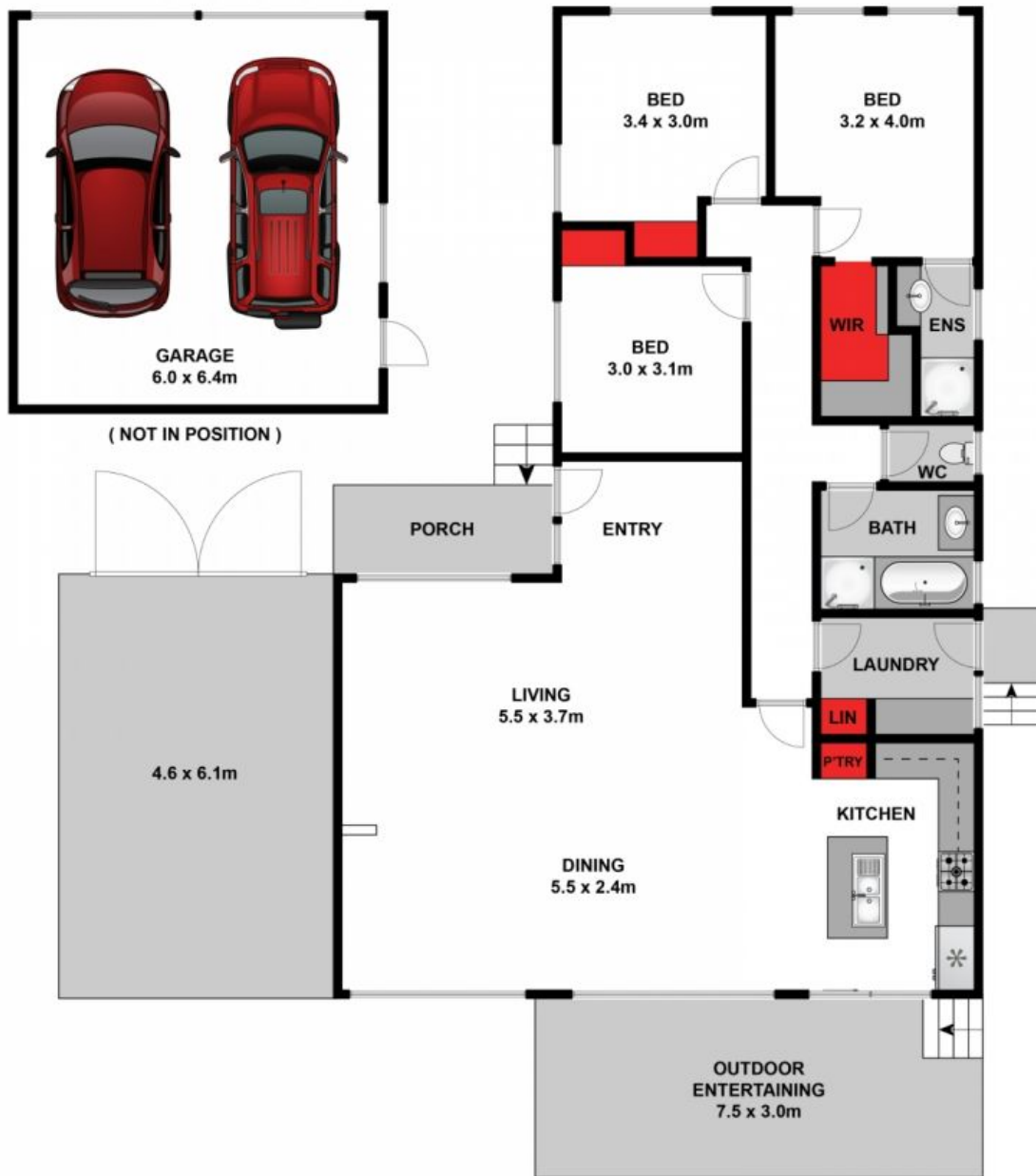
0448510143

karenp@haydenleopold.com.au

Hugh McKewan

0417 538 779

hugh@haydenoceanogrove.com.au



Approx. Area 140m²

Whilst bwrn.com.au has made every attempt to ensure the accuracy of the floor plan contained here, measurements are approximate and no responsibility is taken for any error, omission, or mis-statement. This plan is for illustrative purposes only.



47 Allambie Street, Leopold

HAYDEN

47 Allambie Street

LEOPOLD, VIC