



18 Cypress Crescent LEOPOLD, VIC



3



2



2

Cottage-Style Home In Quiet Pocket Of Leopold!

Nestled in a quiet pocket of Leopold, this cottage-style home puts the elements in place for charming family living!

Public transport is a short walk from your front door, while the nearby Gateway Plaza provides you with an abundance of big-brand stores, food outlets, and charming cafes. The Gateway Sanctuary and Leopold Memorial Reserve sporting grounds encourage the whole family to enjoy some fresh air, while the Leopold Kindergarten and Leopold Primary School are conveniently close by.

The interiors are in spotless condition thanks to several updates, including new carpet and underlay in the last six months and freshly painted interiors in the last few years.

Overlooking the gorgeous cottage gardens, the front lounge offers a peaceful spot to relax.

The open plan living/dining/kitchen creates ample space for the whole family, with plantation shutters allowing you to filter the natural light throughout the day. A gas log fire (

Price: \$499,000 - \$549,000

Property Type: House

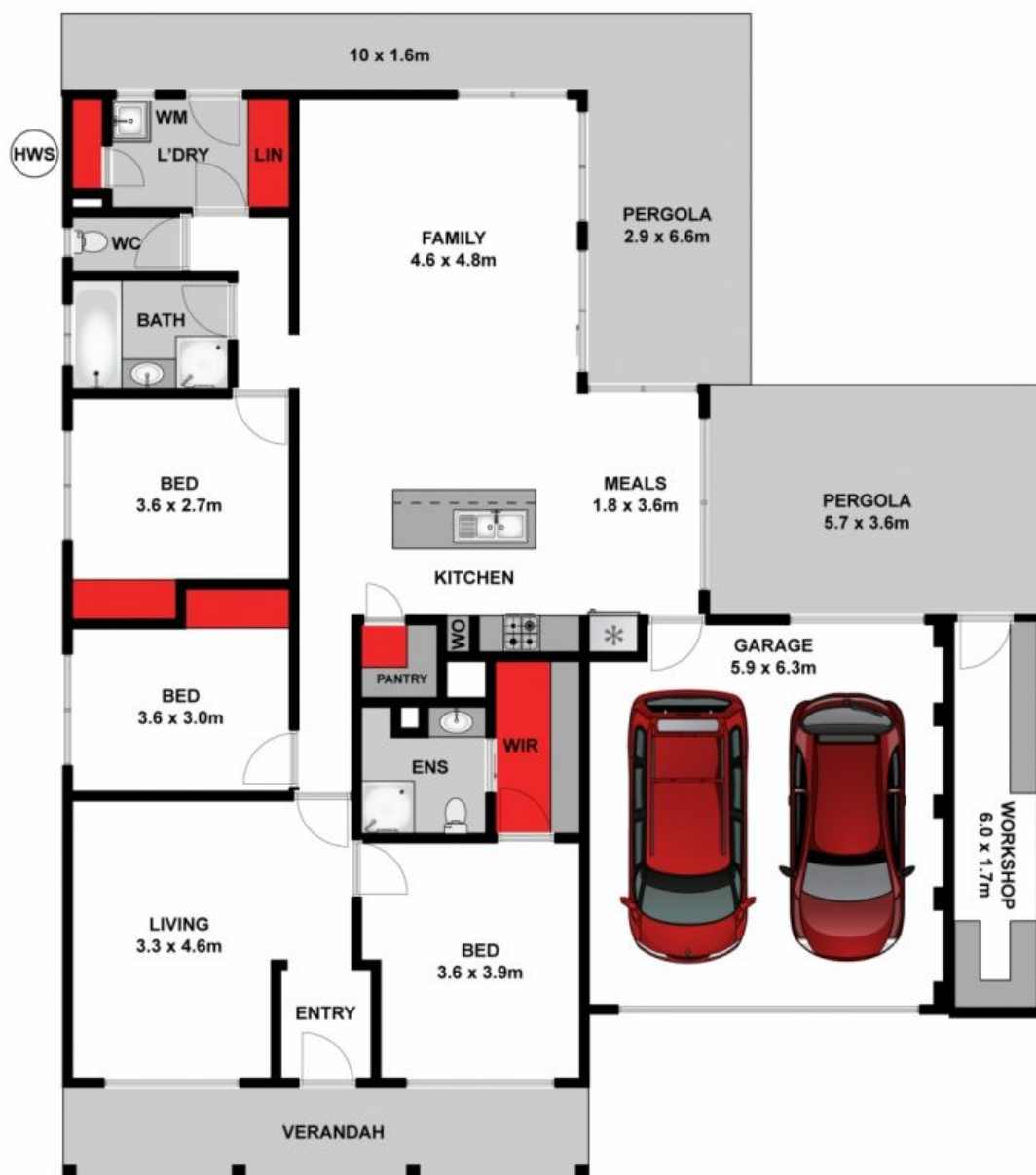
Land: 487 m2

HAYDEN

Karen Purcell

0448510143

karenp@haydenleopold.com.au



GROUND FLOOR

Approx. Area 149m²

Whilst bwrn.com.au has made every attempt to ensure the accuracy of the floor plan contained here, measurements are approximate and no responsibility is taken for any error, omission, or mis-statement. This plan is for illustrative purposes only.



18 Cypress Crescent, Leopold

HAYDEN

18 Cypress Crescent

LEOPOLD, VIC