



2B Riverside Drive TORQUAY, VIC



4



3



1

## Ideal Beachside Residence

Dreaming of parking the car and walking to everything? Dreaming of a beautiful beachside residence, that is low maintenance and will accommodate the overflow of envious guests, has an established small garden and a location to die for? Set over two levels, with the ability to live completely on the lower level, this home features a warm and welcoming practical design, with clean lines and light filled rooms.

Carpeted stairs take you to the upper level, a peaceful area overlooking the trees. The master bedroom includes access to the balcony, walk in robe and ensuite. Two further large bedrooms share a light filled bathroom with bath. Completing this area is a living room with access to the balcony.

**Price:** \$1,050,000  
**Property Type:** Townhouse  
**Land:** 208 m2

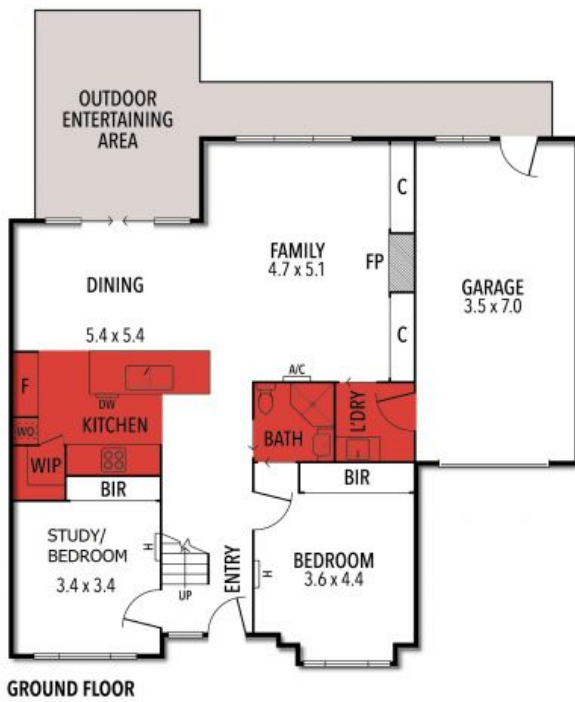
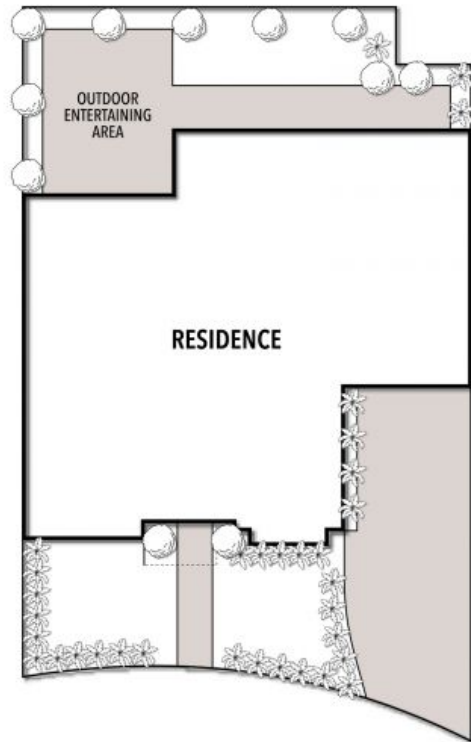
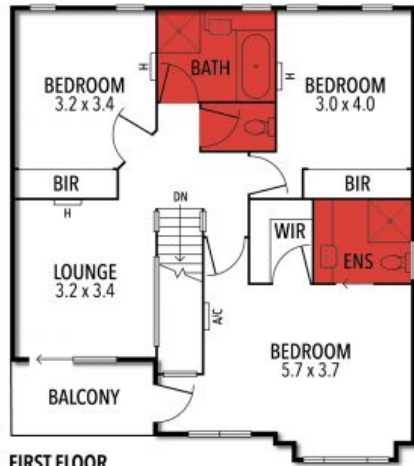
# HAYDEN

Hayden Real Estate -

Torquay

samh@hayden.com.au

# 2B RIVERSIDE DRIVE, TORQUAY



THE ABOVE PLAN IS AN ARTIST'S IMPRESSION ONLY, IT INCLUDES ELEMENTS THAT ARE FOR DISPLAY PURPOSES ONLY AND MAY NOT BE TO SCALE. LANDSCAPING SHOWN IS INDICATIVE ONLY. DIMENSIONS ARE APPROXIMATE.