



20 Moss Road LEOPOLD, VIC



4



2



2

## Contemporary Living With Space For The Boat & Caravan!

Occupying a corner block with backyard vehicle access, this contemporary home presents an excellent opportunity for tradies or those needing to store caravans, boats or trailers!

Superior access to the Portarlington Highway makes for effortless travel to both the Geelong CBD and Bellarine Peninsula, while public transport is conveniently close by. The popular Leopold Sportsmans club is moments away for a great meal with friends. Enjoy easy access to the Bellarine Rail Trail, Gateway Plaza, and Leopold Primary School.

The kitchen perfectly blends style and practicality with stone benchtops, an undermount sink, and stainless steel appliances (dishwasher and 900mm oven, gas hob, rangehood). The step-in pantry takes care of all your storage needs, while the breakfast bar creates a casual dining zone. Featuring sliding door access to the sunny deck and backyard, the Master Bedroom feels like a private retreat. Two built-in robes lead through to the luxe en suite, which showcases a freestanding tub, large semi-frameless shower with two shower heads, dual

**Price:** \$540,000 - \$590,000

**Property Type:** House

**Land:** 517 m2

# HAYDEN

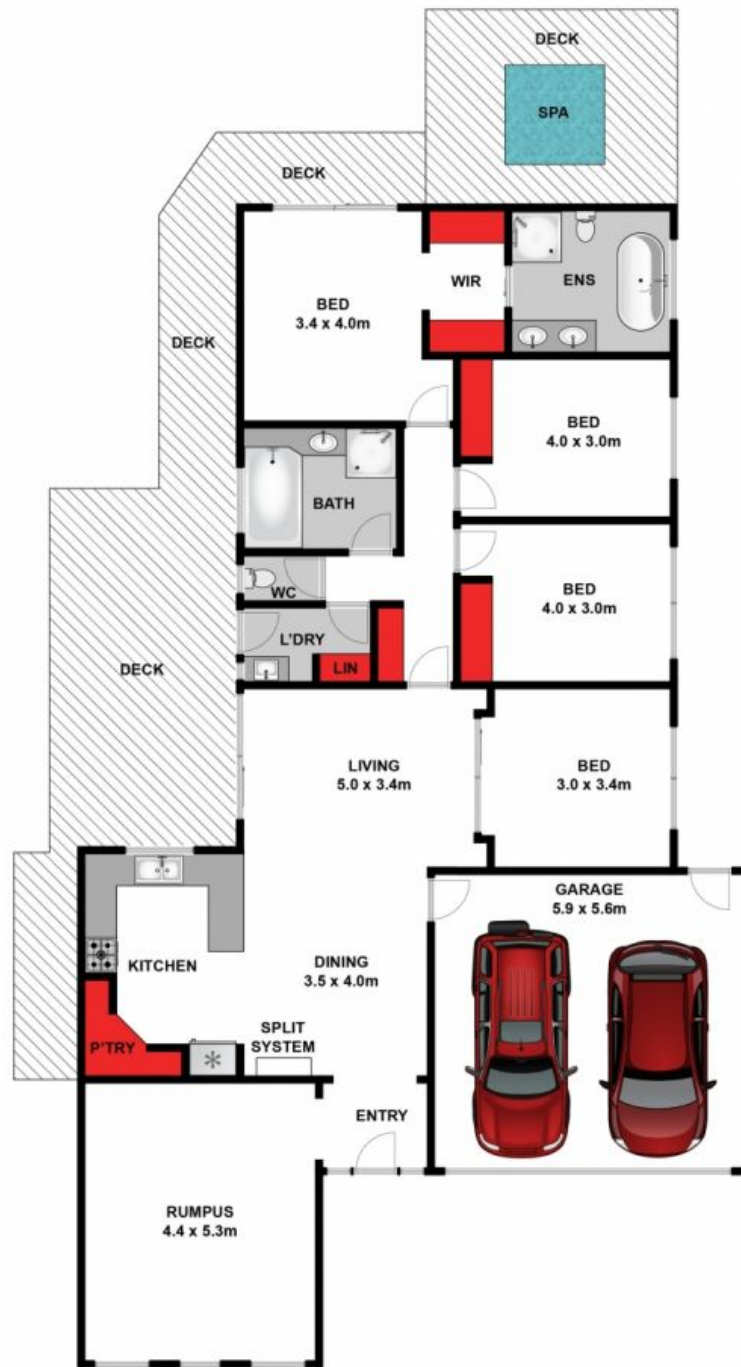
**Hayden Real Estate Karen Purcell**

0448510143

**Leopold**

samh@hayden.com.au

karenp@haydenleopold.com.au



Approx. Area 147m<sup>2</sup>

Whilst [bwrn.com.au](http://bwrn.com.au) has made every attempt to ensure the accuracy of the floor plan contained here, measurements are approximate and no responsibility is taken for any error, omission, or mis-statement. This plan is for illustrative purposes only.



**20 Moss Road, Leopold**

**HAYDEN**

**20 Moss Road**

**LEOPOLD, VIC**