



20 Moss Road LEOPOLD, VIC



4



2



2

Contemporary Living With Space For The Boat & Caravan!

Occupying a corner block with backyard vehicle access, this contemporary home presents an excellent opportunity for tradies or those needing to store caravans, boats or trailers!

Superior access to the Portarlington Highway makes for effortless travel to both the Geelong CBD and Bellarine Peninsula, while public transport is conveniently close by. The popular Leopold Sportsmans club is moments away for a great meal with friends. Enjoy easy access to the Bellarine Rail Trail, Gateway Plaza, and Leopold Primary School.

The kitchen perfectly blends style and practicality with stone benchtops, an undermount sink, and stainless steel appliances (dishwasher and 900mm oven, gas hob, rangehood). The step-in pantry takes care of all your storage needs, while the breakfast bar creates a casual dining zone. Featuring sliding door access to the sunny deck and backyard, the Master Bedroom feels like a private retreat. Two built-in robes lead through to the luxe en suite, which showcases a freestanding tub, large semi-frameless shower with two shower heads, dua

Price: \$540,000 - \$590,000
Property Type: House
Land: 517 m2

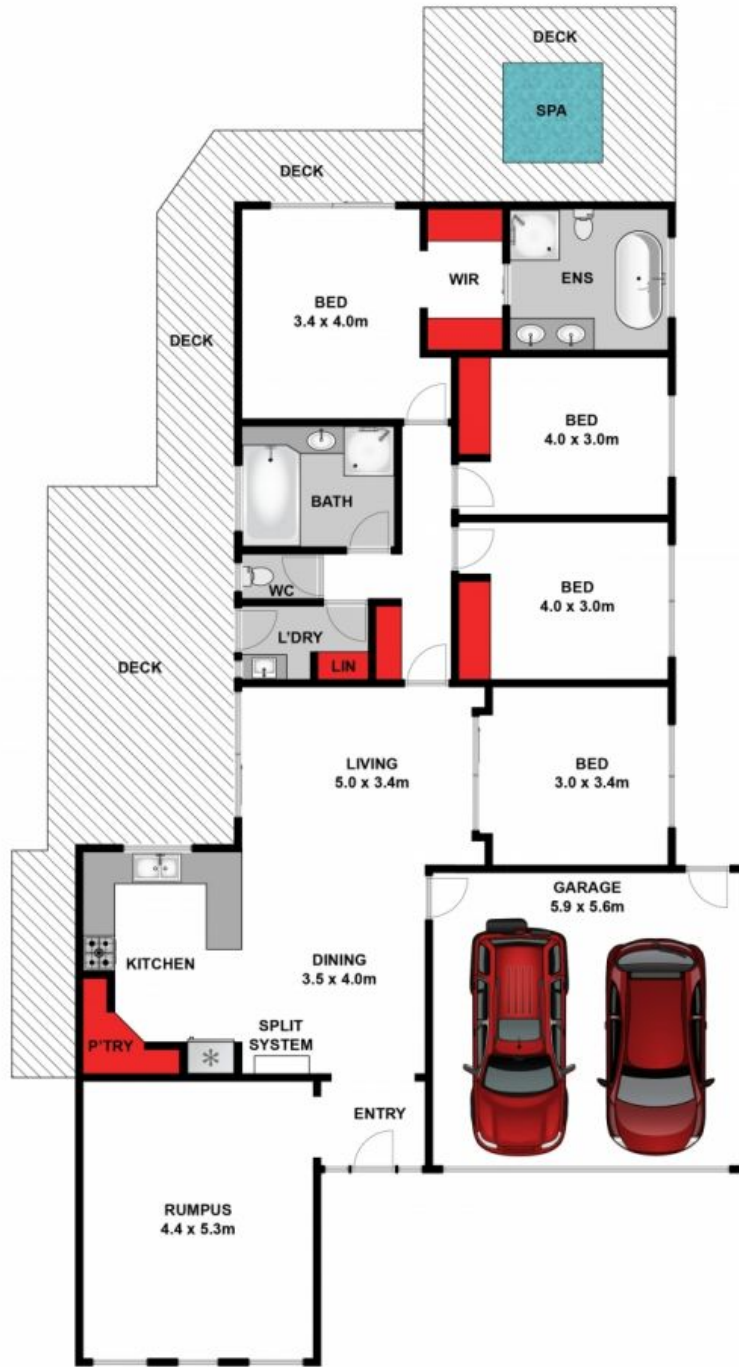


Hayden Real Estate Karen Purcell

0448510143

Leopold
 samn@hayden.com.au

karenp@haydenleopold.com.au



Approx. Area 147m²

Whilst bwrn.com.au has made every attempt to ensure the accuracy of the floor plan contained here, measurements are approximate and no responsibility is taken for any error, omission, or mis-statement. This plan is for illustrative purposes only.



20 Moss Road, Leopold

HAYDEN

20 Moss Road

LEOPOLD, VIC