



DISCLAIMER: This drawing is indicative only & all measurements are approximate.



50-52 Christies Road LEOPOLD, VIC



4



2



2

## Family Home on Approx. 1000m2 With Ample Vehicle Storage!

Occupying approx. 1000m2, this property is the ultimate choice for those looking to store caravans, boats, trailers, and more! Already boasting ample off-street parking, plus offering potential for rear vehicle access from Bradman Court (STCA), you'll need to act swiftly to snap up this unique opportunity!

The elements are in place for easy family living, with the well-loved home creating a welcoming ambience. The front lounge flows through to the kitchen/dining zone, with the kitchen boasting a step-in pantry and stainless steel appliances (dishwasher, 900mm gas hob, Bosch wall oven).

The Master Bedroom features built-in robes and en suite with shower. Three additional bedrooms (two with built-in robes, one with built-in desk/storage) share close access to the updated main bathroom, which is graced with a semi-frameless shower, bathtub, and single vanity. The laundry with storage and separate toilet complete the layout. Modcons inc. zoned

**Price:** \$580,000 - \$635,000

**Property Type:** House

**Land:** 1000 m2

# HAYDEN

**Karen Purcell**

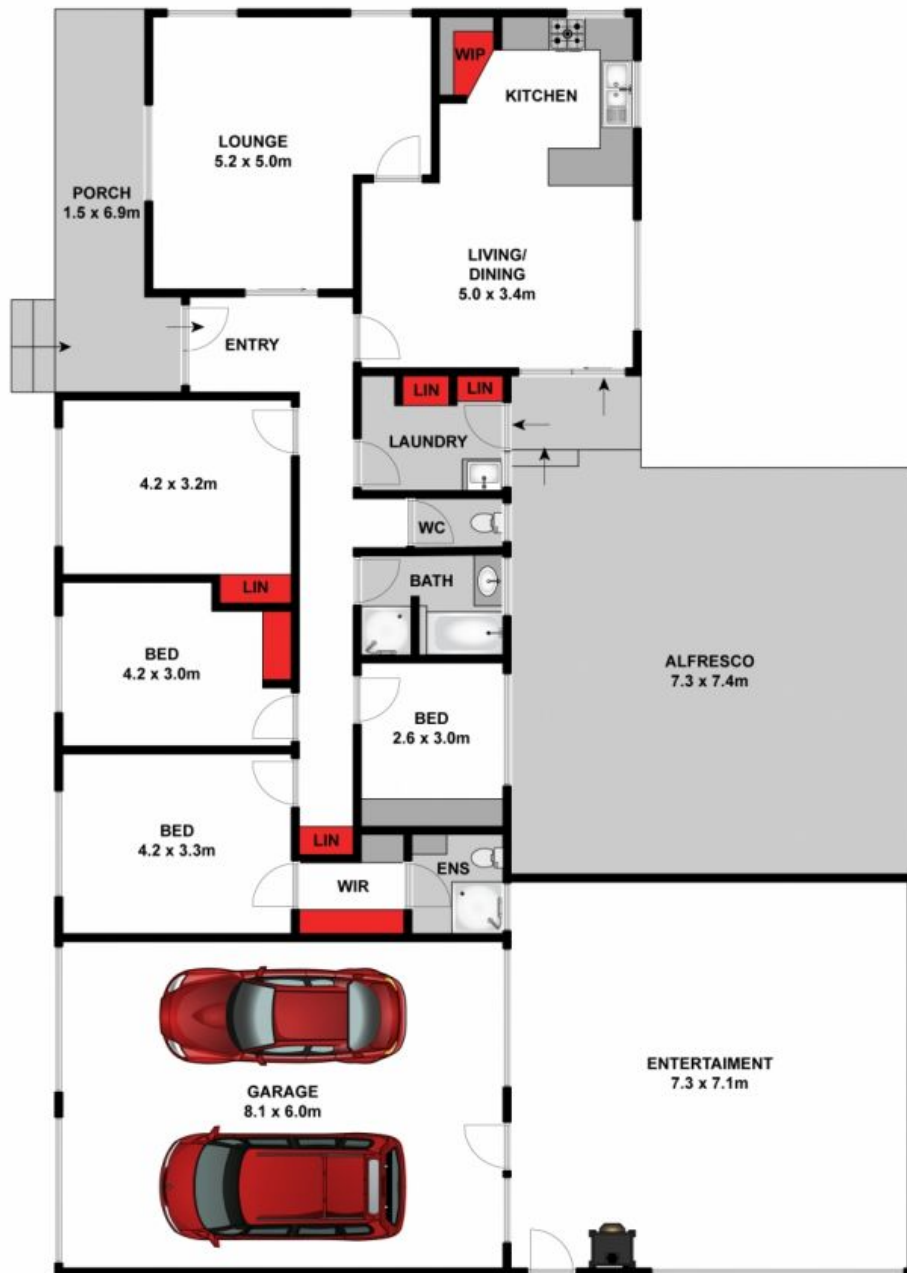
0448510143

karenp@haydenleopold.com.au

**Hugh McKewan**

0417 538 779

hugh@haydenoceanogrove.com.au



Approx. Area 240m<sup>2</sup>

Whilst [bwrn.com.au](http://bwrn.com.au) has made every attempt to ensure the accuracy of the floor plan contained here, measurements are approximate and no responsibility is taken for any error, omission, or mis-statement. This plan is for illustrative purposes only.



**50-52 Christies Road, Leopold**

**HAYDEN**

**50-52 Christies Road**

**LEOPOLD, VIC**