



6 Paraffin Drive LEOPOLD, VIC



4



2



2

The Epitome Of Fine Family Living!

Showcasing the finest blend of luxury and low-maintenance living, this ex-display home is simply divine!

Boasting stone benchtops, stainless steel microwave, ASKO dishwasher, and 900mm black Belling cooking appliances (oven, gas hob, canopy rangehood), every inch of the kitchen exudes quality. A built-in pantry puts the practical elements in place, while the feature splashback is truly unique. The lounge inspires relaxation, while the versatile family room offers potential to be swiftly transformed back into an alfresco (STCA).

Inspection will impress!

Price: \$625,000 - \$659,000

Property Type: House

Land: 512 m2

HAYDEN

Karen Purcell

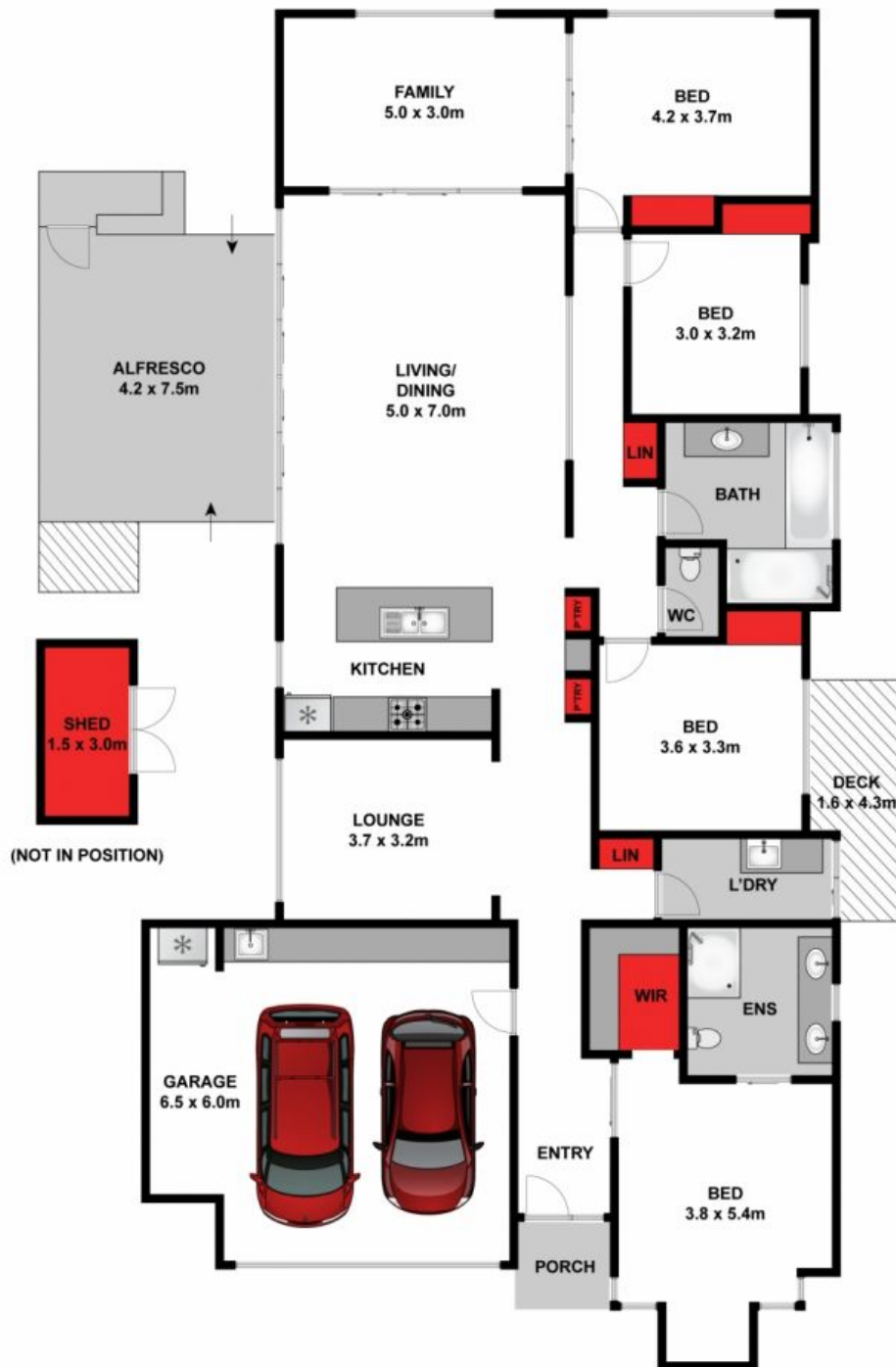
0448510143

karenp@haydenleopold.com.au

Hugh McKewan

0417 538 779

hugh@haydenoceanogrove.com.au



Approx. Area 190m²

Whilst bwrn.com.au has made every attempt to ensure the accuracy of the floor plan contained here, measurements are approximate and no responsibility is taken for any error, omission, or mis-statement. This plan is for illustrative purposes only.



6 Paraffin Drive, Leopold

HAYDEN

6 Paraffin Drive

LEOPOLD, VIC