



8 Darvel Court LEOPOLD, VIC



4



2



2

Architecturally-Designed Family Abode!

Nestled in a tightly-held pocket of Leopold, this architecturally-designed residence promises sensational family living!

The quiet court is ideally positioned only a short stroll from public transport and the Bellarine Rail Trail. The Leopold Primary School and brand new Leopold Community Hub are wonderfully close by for families, along with the Dorothy Street shops. The expansive Gateway Plaza takes care of all of your shopping and dining needs, while fitness enthusiasts will appreciate easy access to the sporting facilities of Leopold Memorial Reserve.

High ceilings and hardwood floors enhance the immaculate interiors of this one-owner home. The spacious open plan living zone opens onto the private, north-facing backyard ? creating a beautiful indoor-outdoor connection that is ideal for entertaining! The kitchen creates the focus of the open plan living zone, showcasing stone benchtops, a walk-in pantry, and stainless steel appliances (oven, gas hob, rangehood, ASKO dishwasher). Pendant lighting highlights the dining area, while a living zone either side of the kitchen entices the w

Price: \$690,000 - \$755,000

Property Type: House

Land: 814 m2

HAYDEN

Karen Purcell

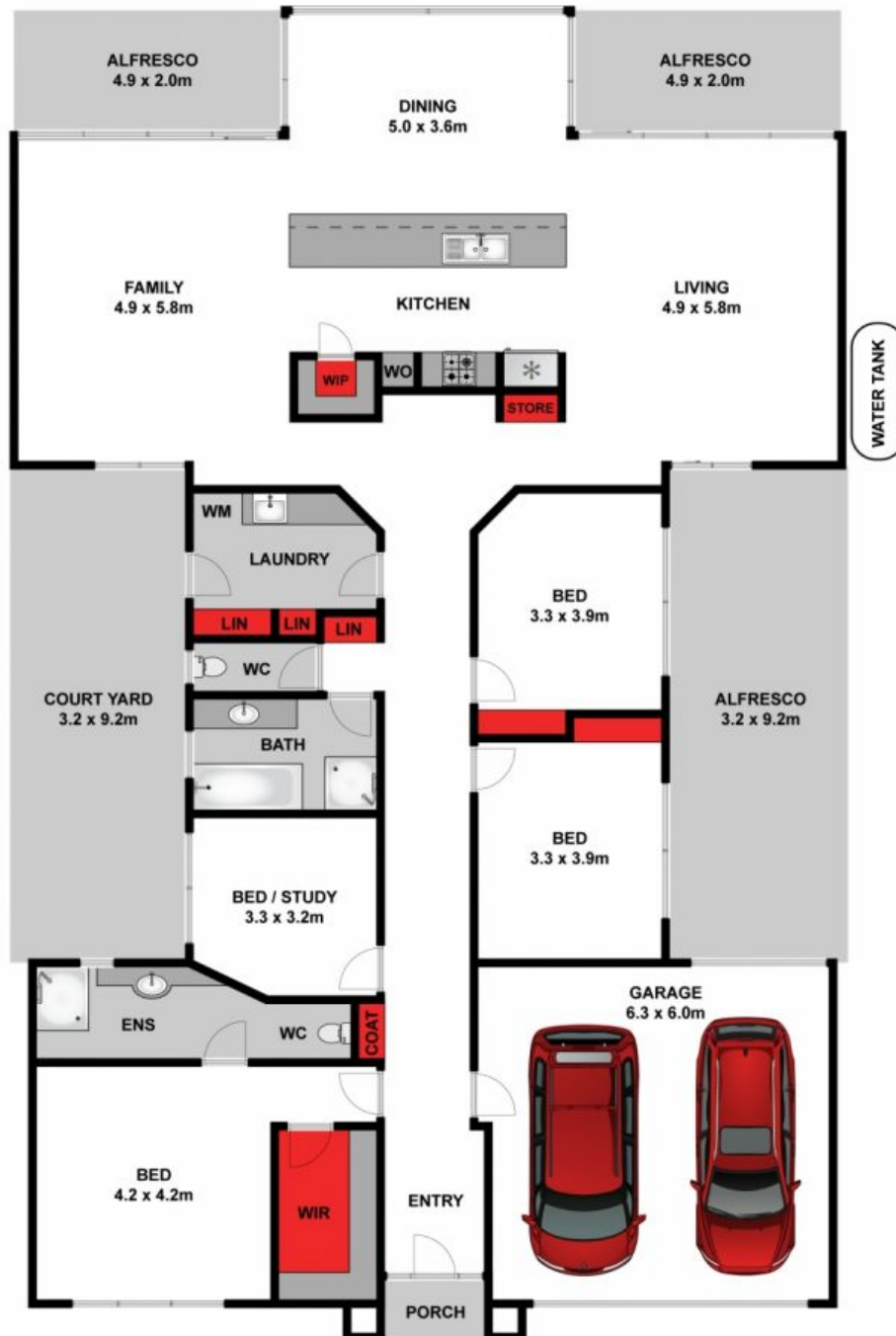
0448510143

karenp@haydenleopold.com.au

Hugh McKewan

0417 538 779

hugh@haydenoceanogrove.com.au



Approx. Area 267m²

Whilst bwrn.com.au has made every attempt to ensure the accuracy of the floor plan contained here, measurements are approximate and no responsibility is taken for any error, omission, or mis-statement. This plan is for illustrative purposes only.

8 Darvel Court, Leopold

HAYDEN

8 Darvel Court

LEOPOLD, VIC