



8 Coffee Rock Drive LEOPOLD, VIC



3



2



2

## When Style & Convenience Are Key!

Less than four years old, this home offers the perfect blend of contemporary and low-maintenance living! So whether you're dreaming of owning your home, searching for a terrific investment, or looking to downsize in style, this property will delight!

Built by JG King Homes, this quality steel-frame house boasts a 50 Year Structure Warranty. The open plan living zone creates the heart of the home and flows onto the sheltered alfresco deck via glass stacker doors ? providing a wealth of space for both everyday living and entertaining!

The remote double lock-up garage features internal access, while the small backyard and easy-care gardens encourage a carefree lifestyle.

With so much to offer, you'll need to act swiftly to snap up this Leopold gem! Inspect ASAP!

**Price:** \$460,000- \$490,000

**Property Type:** House

**Land:** 335 m2

# HAYDEN

**Karen Purcell**

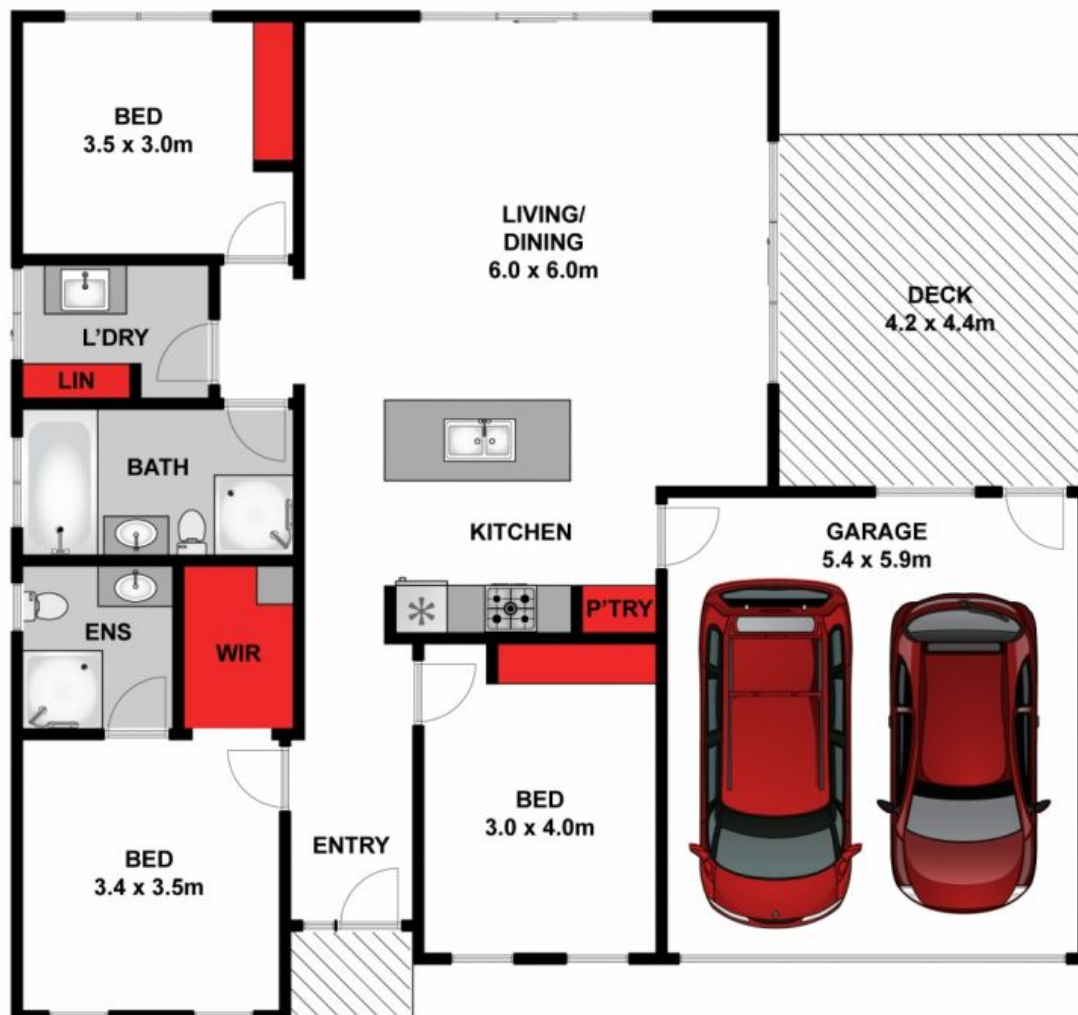
0448510143

karenp@haydenleopold.com.au

**Hugh McKewan**

0417 538 779

hugh@haydenoceanogrove.com.au



Approx. Area 146m<sup>2</sup>

Whilst [bwwm.com.au](http://bwwm.com.au) has made every attempt to ensure the accuracy of the floor plan contained here, measurements are approximate and no responsibility is taken for any error, omission, or mis-statement. This plan is for illustrative purposes only.



**8 Coffee Rock Drive, Leopold**

**HAYDEN**

**8 Coffee Rock Drive**

**LEOPOLD, VIC**