



8 Coffee Rock Drive LEOPOLD, VIC



When Style & Convenience Are Key!

Less than four years old, this home offers the perfect blend of contemporary and low-maintenance living! So whether you're dreaming of owning your home, searching for a terrific investment, or looking to downsize in style, this property will delight!

Built by JG King Homes, this quality steel-frame house boasts a 50 Year Structure Warranty. The open plan living zone creates the heart of the home and flows onto the sheltered alfresco deck via glass stacker doors ? providing a wealth of space for both everyday living and entertaining!

The remote double lock-up garage features internal access, while the small backyard and easy-care gardens encourage a carefree lifestyle.

With so much to offer, you'll need to act swiftly to snap up this Leopold gem! Inspect ASAP!

Price: \$460,000- \$490,000

Property Type: House

Land: 335 m2



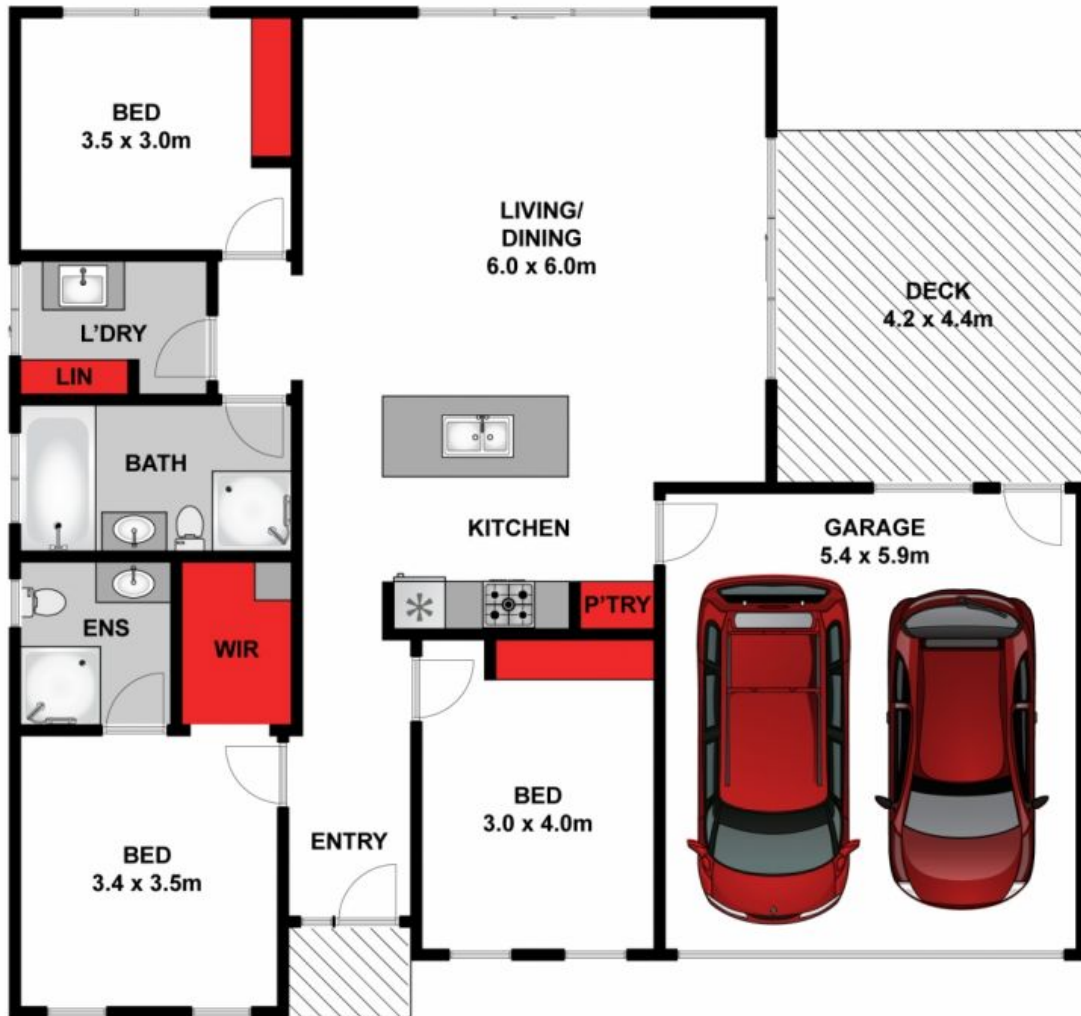
Karen Purcell

Hugh McKewan

0448510143

0417 538 779

karenp@haydenleopold.com.au hugh@haydenoceanogrove.com.au



Approx. Area 146m²

Whilst bwrn.com.au has made every attempt to ensure the accuracy of the floor plan contained here, measurements are approximate and no responsibility is taken for any error, omission, or mis-statement. This plan is for illustrative purposes only.



8 Coffee Rock Drive, Leopold

HAYDEN

8 Coffee Rock Drive

LEOPOLD, VIC