



8 Peterho Boulevard POINT LONSDALE, VIC



3



2



4

Coastal Provincial Living

This charming country-style home will bring joy to a fortunate family. Set on a large block the cottage facade and verandah welcome you to enter into two formal principal rooms, of a lounge and dining (currently set as a study). These rooms are classically appointed with ceiling roses, deep cornices, picture rail mouldings, cast iron wall vents, and a timber mantel. Wrapped in white dado walls accented with natural timber, the provincial coastal feel of the main living area contrasts with the formal elegance of the principal rooms melding with ease. The open plan is spacious, very comfortable and cosy, providing a second lounge and dining area. The galley kitchen is a communal space fitted with a Bosch DWS, two ovens: wall and a 900mm s/s freestanding with a 5-burner gas hob, and there is plenty of storage and surface area. The focal point of the box bay garden window lets more light in and offers a greenhouse nook for growing herbs. The glazing ensures beautiful light at all times of the day. From the kitchen your gaze is instantly drawn out to the patio that reaches into the flourishing garden space. There is plenty of room for a trampoline and the alfresco setting is a wonderful spot to entertain friends. The ground floor ensuite master is complete with a WIR and garden outlook. The single gable reasserts itself with the desi

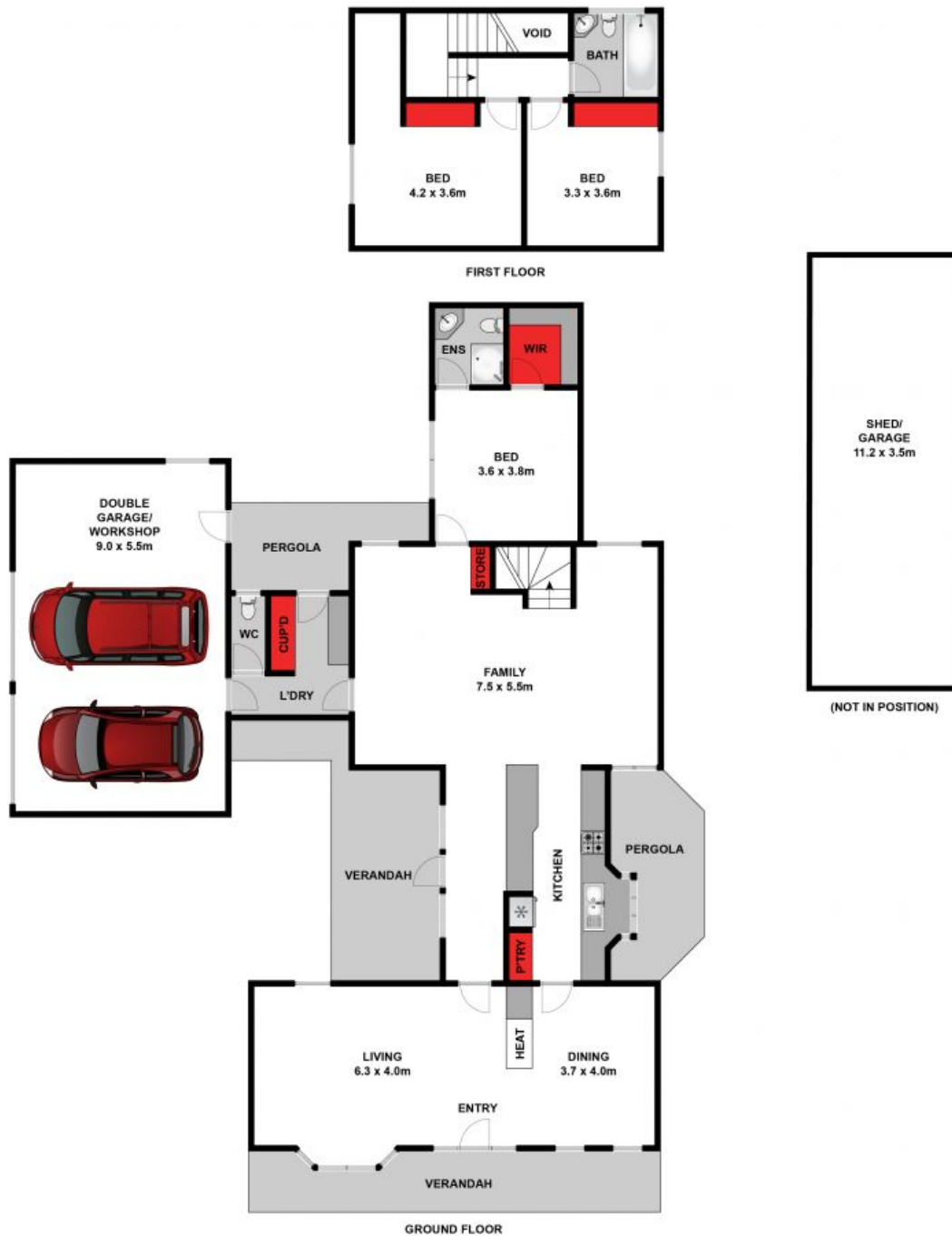
Price: \$720,000-\$790,000
Property Type: House
Land: 740 m2

HAYDEN

Penny Dawson

0448510200

penny@haydenoceanogrove.com.



Whilst bwm.com.au has made every attempt to ensure the accuracy of the floor plan contained here, measurements are approximate and no responsibility is taken for any error, omission, or mis-statement. This plan is for illustrative purposes only.

8 Peterho Boulevard, Point Lonsdale

HAYDEN

8 Peterho Boulevard

POINT LONSDALE, VIC