



69 Simons Road LEOPOLD, VIC



3



2



2

## Easy & Convenient Family Living!

Whether you're dreaming of breaking into the property market, searching for the next addition to your investment portfolio, or simply looking for a great family abode, this home is a terrific choice!

The interiors invite you to move straight in, while also inviting you to add your own creative touch. Awash in northern light, the generous lounge and dining area create a casual zone for the whole family to enjoy. Creating ample space for busy families, the kitchen features cooking appliances (oven, gas hob, rangehood) and a large walk-in pantry with powerpoints.

Ducted heating keeps you cosy in the cooler months, while the lounge is complete with a ceiling fan.

With the foundations in place for easy family living, this home presents an excellent entry point into the property market! Inspect ASAP!

**Price:** \$410,000 - \$429,000

**Property Type:** House

**Land:** 534 m2

# HAYDEN

**Karen Purcell**

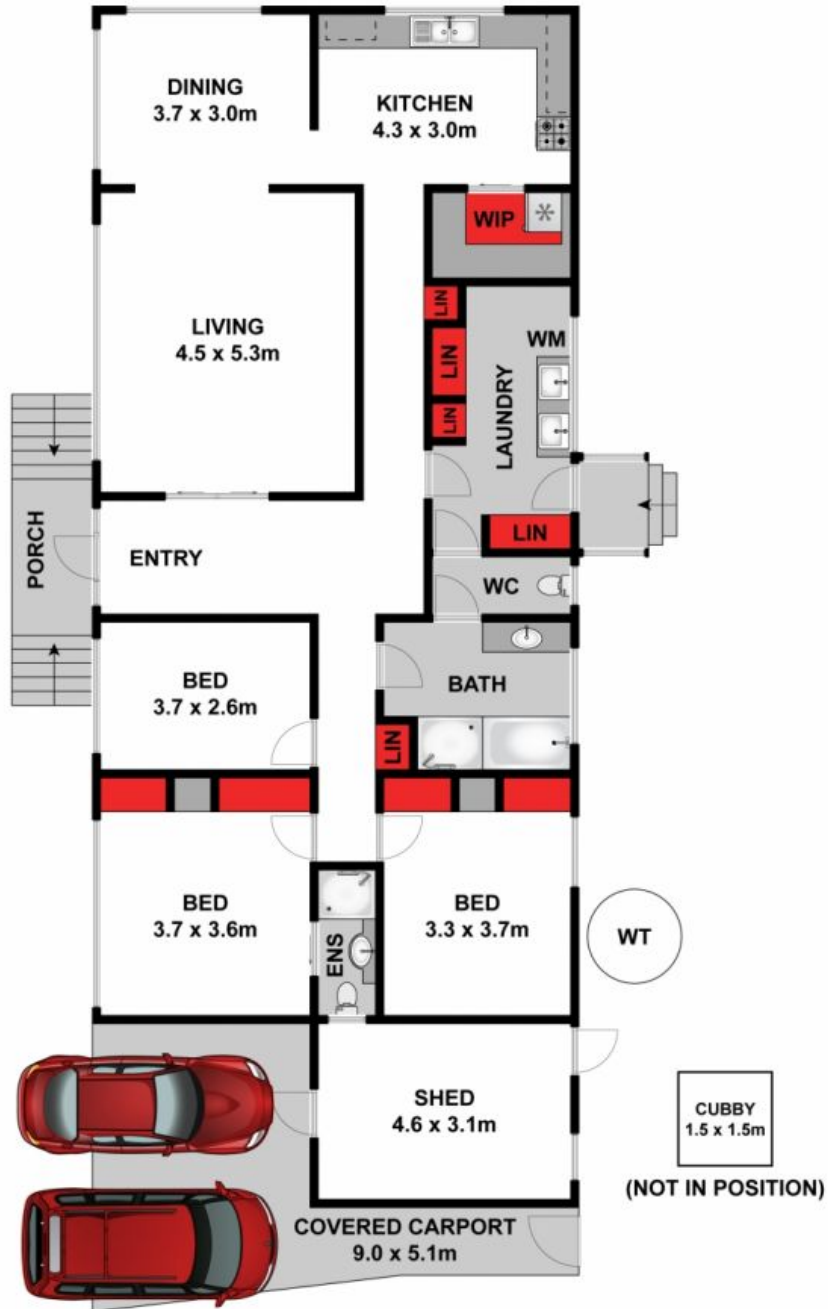
0448510143

karenp@haydenleopold.com.au

**Hugh McKewan**

0417 538 779

hugh@haydenoceanogrove.com.au



Approx House Area 150m<sup>2</sup>

Whilst [bwrn.com.au](http://bwrn.com.au) has made every attempt to ensure the accuracy of the floor plan contained here, measurements are approximate and no responsibility is taken for any error, omission, or mis-statement. This plan is for illustrative purposes only.



**69 Simons Road, Leopold**

**HAYDEN**

**69 Simons Road**

**LEOPOLD, VIC**