



5 Huon Crescent LEOPOLD, VIC



4



2



2

Picture-Perfect Family Living!

With nothing left to do except move in and enjoy, here's your chance to embrace the blissful family lifestyle you've been craving!

The freshly painted interiors are in immaculate condition, exuding a breezy ambience throughout the home. The front lounge creates a peaceful spot to relax, while the spacious open plan living zone is bathed in an abundance of natural light. Overlooking the gorgeous gardens, the north-facing bay window makes a statement of the dining area. The kitchen features a large built-in pantry and appliances inc. a wall oven, gas hob, rangehood, and dishwasher.

If you're looking for a beautiful home to raise your family, then this property is the perfect choice! Inspection will delight!

Price: \$565,000 - \$595,000

Property Type: House

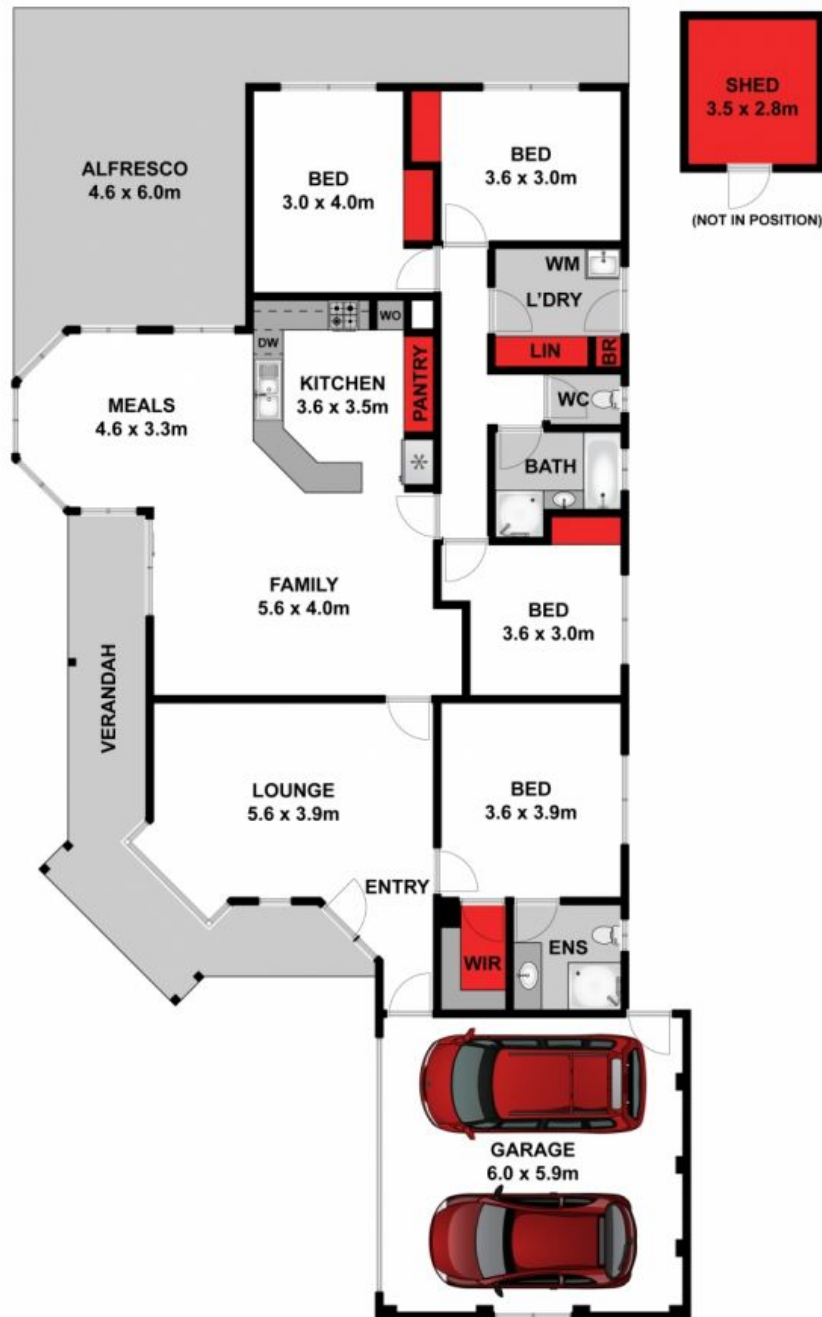
Land: 649 m2

HAYDEN

Karen Purcell

0448510143

karenp@haydenleopold.com.au



Approx House Area 210m²

Whilst bwrn.com.au has made every attempt to ensure the accuracy of the floor plan contained here, measurements are approximate and no responsibility is taken for any error, omission, or mis-statement. This plan is for illustrative purposes only.



5 Huon Crescent, Leopold

HAYDEN

5 Huon Crescent

LEOPOLD, VIC