



2-4 Pickworth Drive LEOPOLD, VIC



4



2



2

The Lifestyle You've Been Dreaming Of!

Treat your family to the lifestyle you've been dreaming of in Leopold! Featuring a spacious layout, stunning kitchen, and low-maintenance gardens, this residence puts the elements in place for superb family living! A wide entrance with double doors invites you into the home, while high ceilings and glossy floor tiles enhance the immaculate interiors. The open plan living/dining/kitchen zone unites with sheltered alfresco via two glass sliding doors ? creating a lovely sense of flow and connectivity that inspires entertaining!

The generous lounge sets the scene for many fun-filled movie nights to come.

Three additional bedrooms feature built-in robes. The study nook, main bathroom, powder room, and laundry with storage complete the layout.

Price: \$559,000 - \$585,000

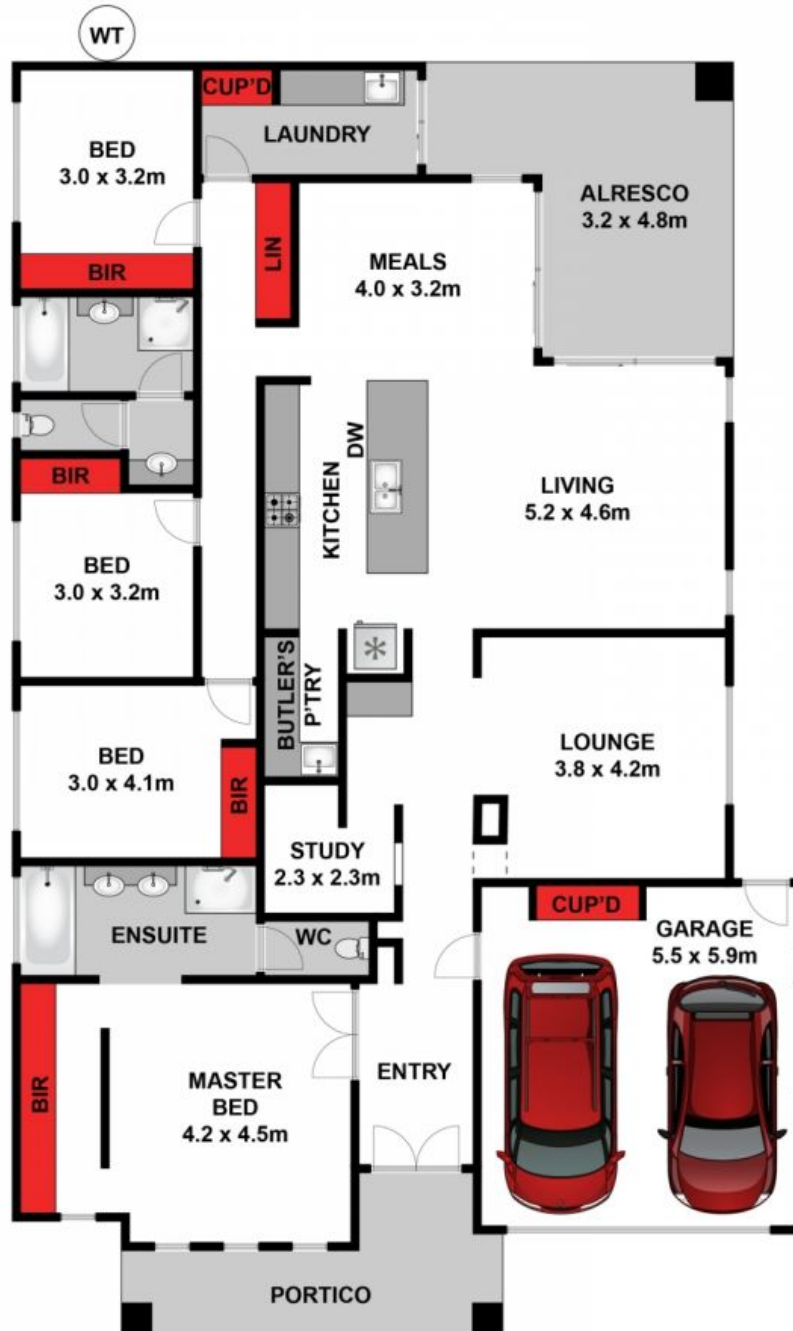
Property Type: House

Land: 534 m2

HAYDEN

Hayden Real Estate -

Ocean Grove
samh@hayden.com.au



Approx House Area 237m²

Whilst bwrn.com.au has made every attempt to ensure the accuracy of the floor plan contained here, measurements are approximate and no responsibility is taken for any error, omission, or mis-statement. This plan is for illustrative purposes only.



2-4 Pickworth Drive, Leopold

HAYDEN

2-4 Pickworth Drive

LEOPOLD, VIC