



2-4 Pickworth Drive LEOPOLD, VIC



4



2



2

## The Lifestyle You've Been Dreaming Of!

Treat your family to the lifestyle you've been dreaming of in Leopold! Featuring a spacious layout, stunning kitchen, and low-maintenance gardens, this residence puts the elements in place for superb family living! A wide entrance with double doors invites you into the home, while high ceilings and glossy floor tiles enhance the immaculate interiors. The open plan living/dining/kitchen zone unites with sheltered alfresco via two glass sliding doors ? creating a lovely sense of flow and connectivity that inspires entertaining!

The generous lounge sets the scene for many fun-filled movie nights to come.

Three additional bedrooms feature built-in robes. The study nook, main bathroom, powder room, and laundry with storage complete the layout.

**Price:** \$559,000 - \$585,000

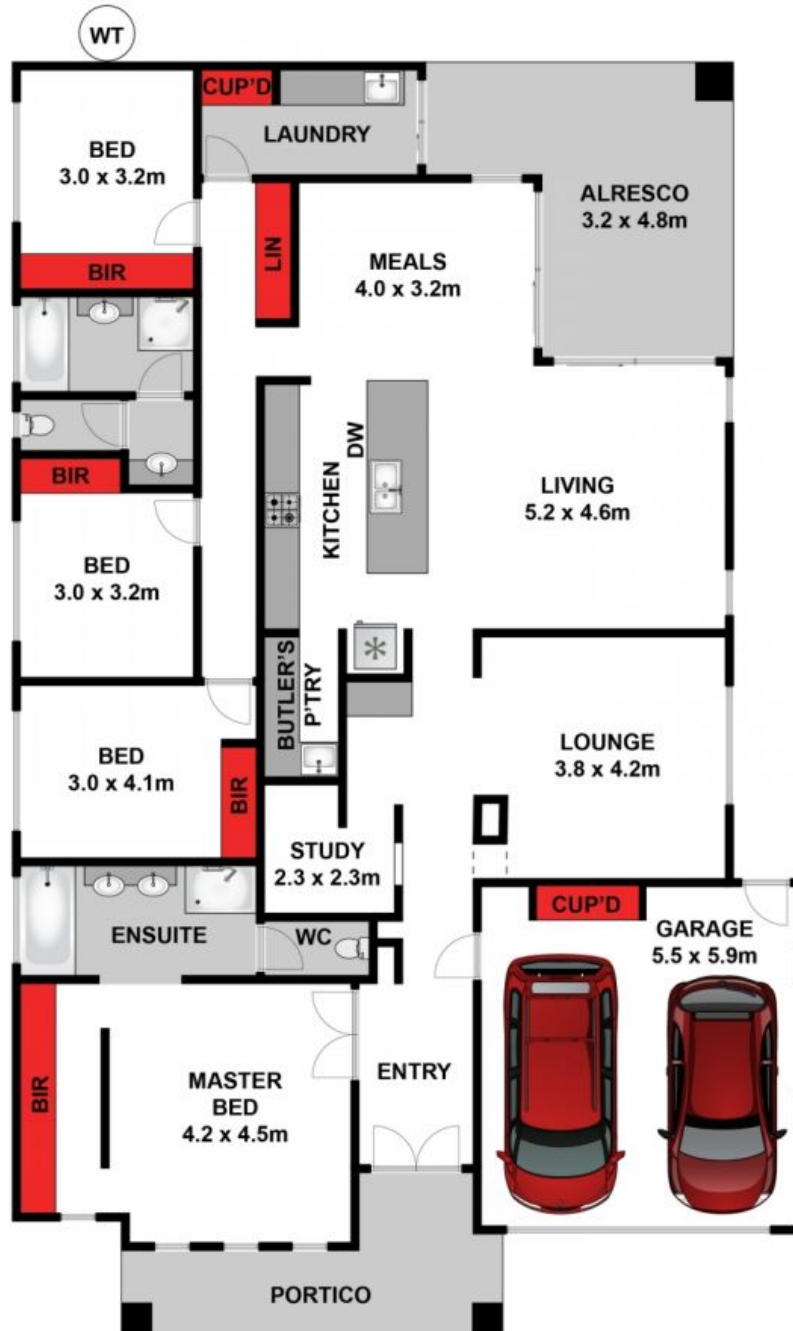
**Property Type:** House

**Land:** 534 m2

# HAYDEN

Hayden Real Estate -

**Ocean Grove**  
samh@hayden.com.au



Approx House Area 237m<sup>2</sup>

Whilst [bwrn.com.au](http://bwrn.com.au) has made every attempt to ensure the accuracy of the floor plan contained here, measurements are approximate and no responsibility is taken for any error, omission, or mis-statement. This plan is for illustrative purposes only.



**2-4 Pickworth Drive, Leopold**

**HAYDEN**

**2-4 Pickworth Drive**

**LEOPOLD, VIC**